

THE KEVIN HAGGERTY
INNER CIRCLE
TRAINING PROGRAM

November 15th, 2005

SECTION 1: SOME INTRADAY TREND GUIDELINES

**HERE ARE SOME THINGS I LOOK AT TO DETERMINE
THE TREND STATUS OF WHAT I AM LOOKING TO TRADE**

1. THE PREVIOUS DAYS HIGH, LOW, CLOSE
2. PRICE DIRECTION RELATIVE TO OPENING PRICE. WHEN IT TURNS NEGATIVE FROM POSITIVE IT IS FIRST INDICATION THAT SENTIMENT HAS SWITCHED TO DOWNSIDE [SUPPLY>DEMAND]
3. NET PLUS OR NET MINUS INDICATES SIDE TO TRADE ON WITH LEAST RESISTANCE.

NET PLUS: IS WHEN PX IS ABOVE BOTH TODAYS OPENING PX AND PREVIOUS CLOSING PX.

NET MINUS: IS WHEN PX IS BELOW BOTH TODAYS OPENING PX AND PREVIOUS CLOSING PX.

NOTE: IF PX GAPS ON THE OPENING ABOVE PREV. DAYS CLOSE THEN REVERSES BELOW TODAYS OPENING IT IS NEUTRAL, BUT PROFESSIONALS WILL TAKE SHORT BIAS [MARKET MAKERS, SPECIALISTS] AS INSTITUTIONAL SELLERS LIKE TO SELL STRENGTH WHEN POSSIBLE [REVERSE FOR GAPS DOWN]

THE BEST INDICATION FOR A TREND DAY STARTS WITH EITHER A NET PLUS OR NET MINUS CONDITION

4. AGGRESSIVE DAYTRADERS CAN USE THE 8 EMA ON THE 60 AND 15 MIN CHARTS AS EARLY TREND DECISION BUT YOU WILL ALSO HAVE MORE CHANGES IN DIRECTION. THE 240 EMA SHOULD ALWAYS BE ON YOUR 5 MIN CHART.

5. STRENGTH OF TREND IDENTIFICATION:

DAILY CHART:

A. TODAY'S PX ABOVE PREV HIGH

B " PX ABOVE PREV CLOSE

C " PX ABOVE TODAY'S OPEN PX

D. " PX ABOVE 8 EMA WHICH IS >20 EMA [daily chart]

WEEKLY CHART: SAME AS DAILY GUIDELINES

EXAMPLE OF NET NINUS ENTRY 11/15/05 [SPY]

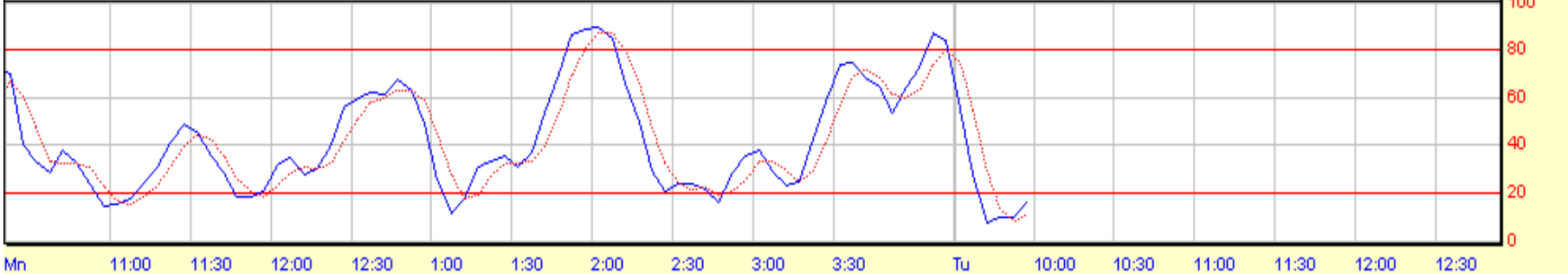
STANDARD & POORS DEP REC 123.40 -0.29 -0.23%

Exp. Mov. Avg. (8) Last=123.48
Exp. Mov. Avg. (24) Last=123.55
Exp. Mov. Avg. (96) Last=123.57
Exp. Mov. Avg. (240) Last=123.31



© 1998-2004 Prophet Financial Systems, Inc. | Terms of use apply.

Stochastic, Full (8,3,3)

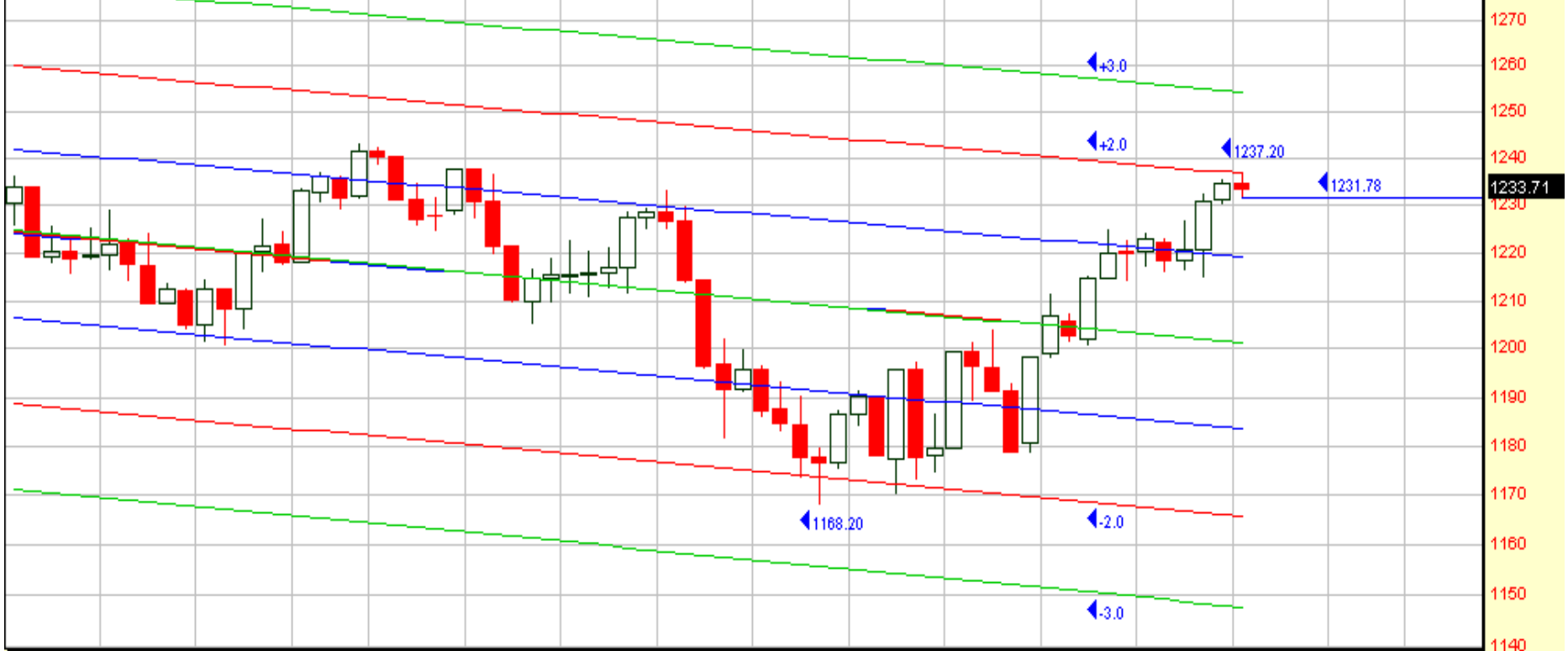


S&P 500 Index 1233.71 0.00 0.00%

Standard Dev. Channel (1) Last=1201.39

Standard Dev. Channel (2) Last=1201.28

Standard Dev. Channel (3) Last=1201.13



© 1998-2004 Prophet Financial Systems, Inc. | Terms of use apply.

RSI, Wilder (5)



ESZ5-E-MINI S&P 500 1236.00 -1.25 -0.10%

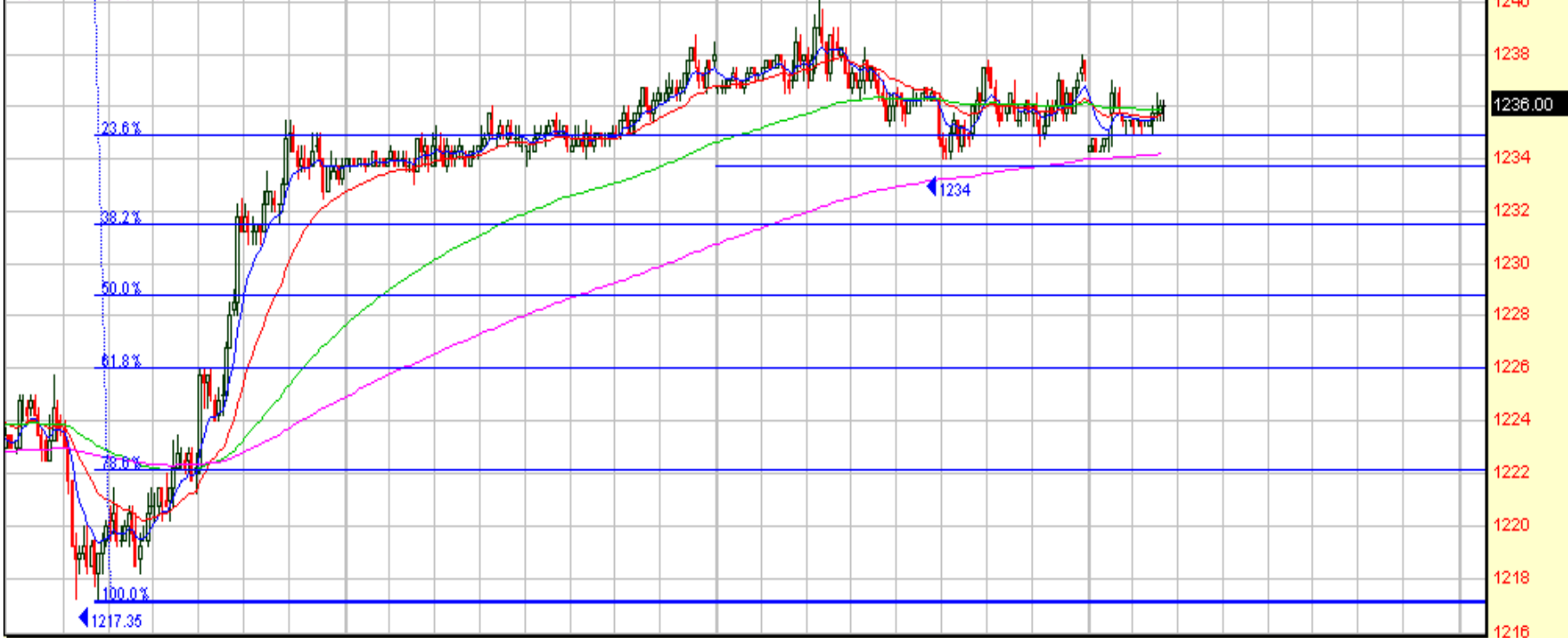
Exp. Mov. Avg. (8) Last=1235.68

Exp. Mov. Avg. (24) Last=1235.66

Exp. Mov. Avg. (96) Last=1235.88

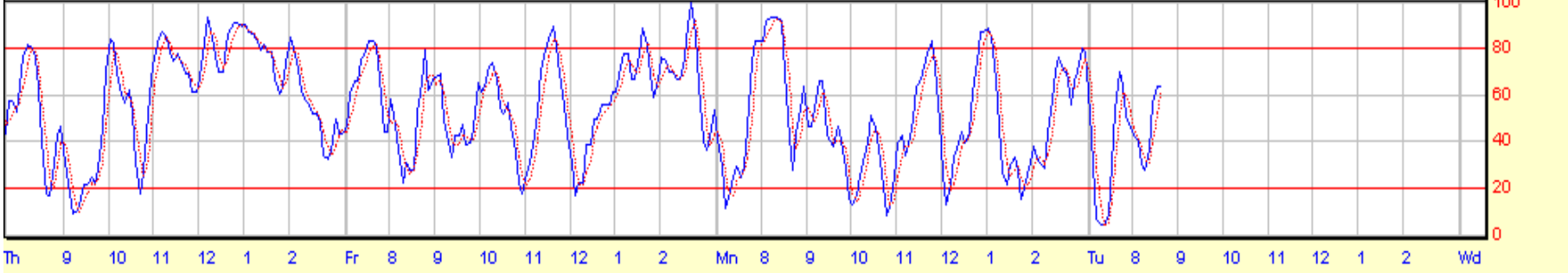
Exp. Mov. Avg. (240) Last=1234.19

ESZ5 11/15/05 9:40AM



© 1998-2004 Prophet Financial Systems, Inc. | Terms of use apply.

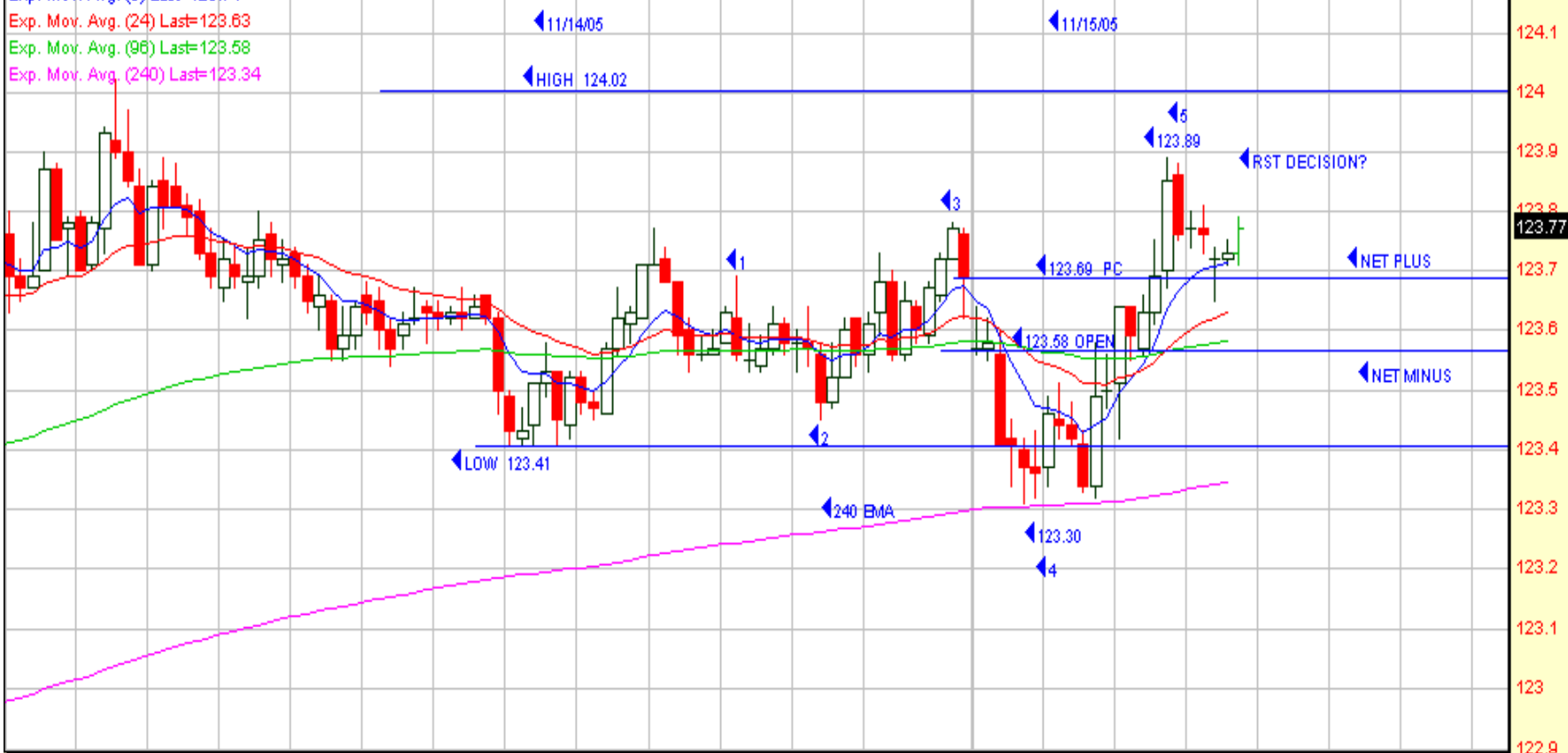
Stochastic, Full (8,3,3)



Th 9 10 11 12 1 2 Fr 8 9 10 11 12 1 2 Mn 8 9 10 11 12 1 2 Tu 8 9 10 11 12 1 2 Wd

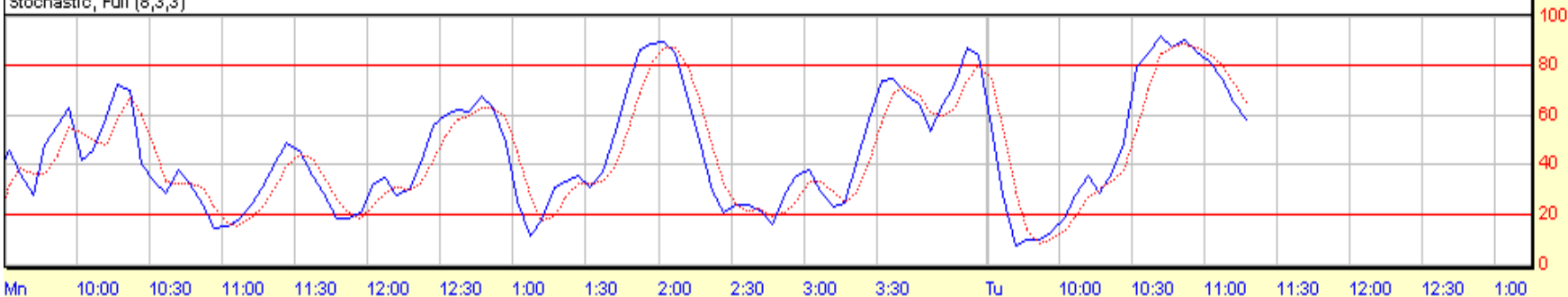
STANDARD & POORS DEP REC 123.77 0.08 0.06%

Exp. Mov. Avg. (8) Last=123.71
Exp. Mov. Avg. (24) Last=123.63
Exp. Mov. Avg. (96) Last=123.58
Exp. Mov. Avg. (240) Last=123.34

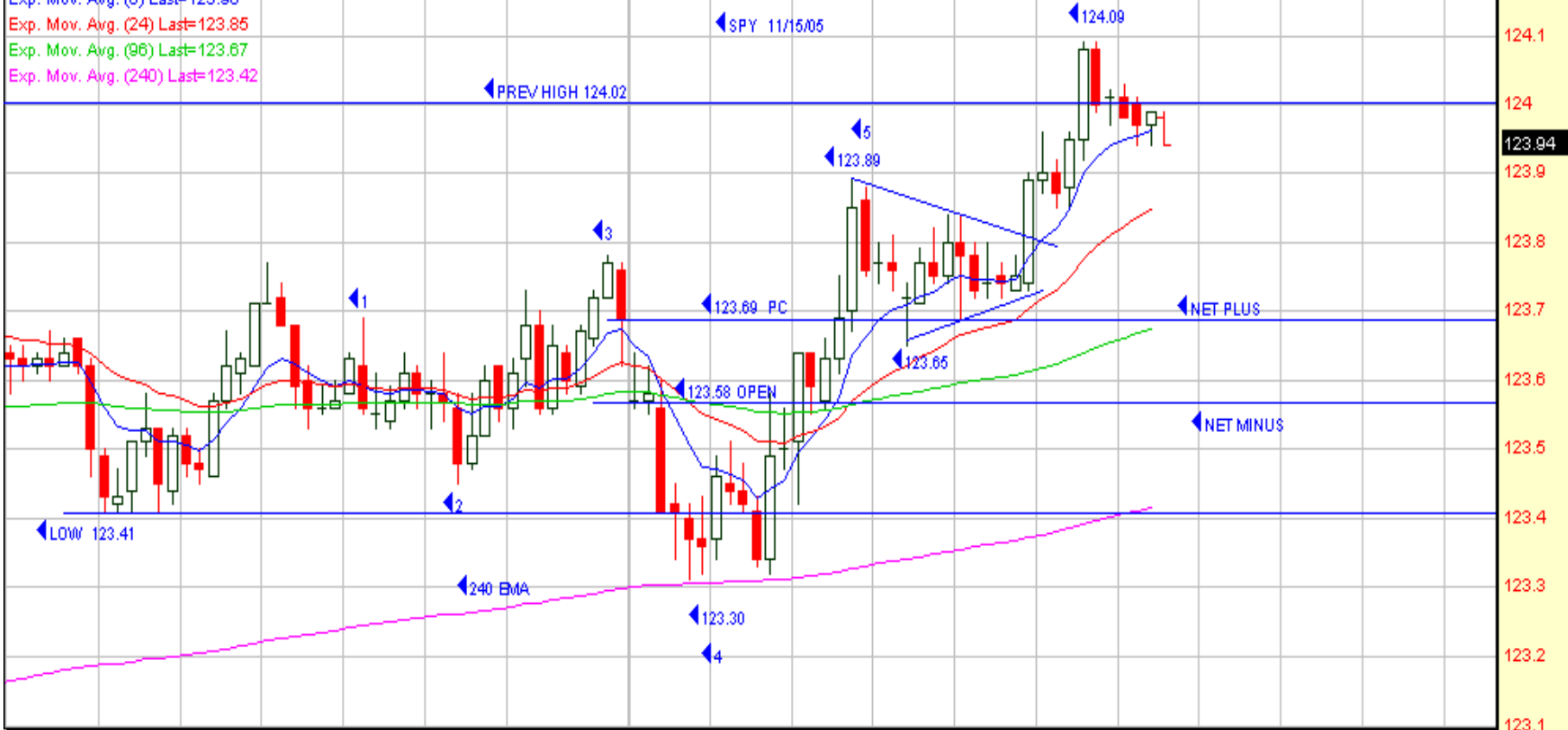


© 1998-2004 Prophet Financial Systems, Inc. | Terms of use apply.

Stochastic, Full (8,3,3)

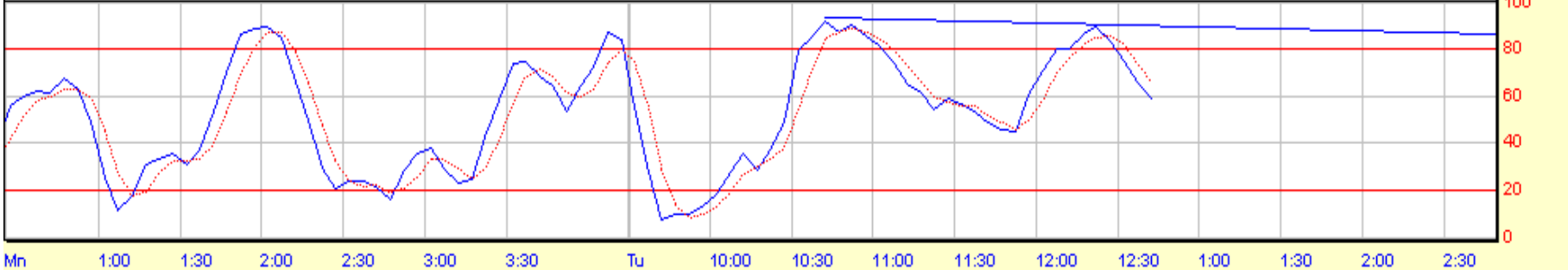


Exp. Mov. Avg. (8) Last=123.96
Exp. Mov. Avg. (24) Last=123.85
Exp. Mov. Avg. (96) Last=123.67
Exp. Mov. Avg. (240) Last=123.42



© 1998-2004 Prophet Financial Systems, Inc. | Terms of use apply.

Stochastic, Full (8,3,3)



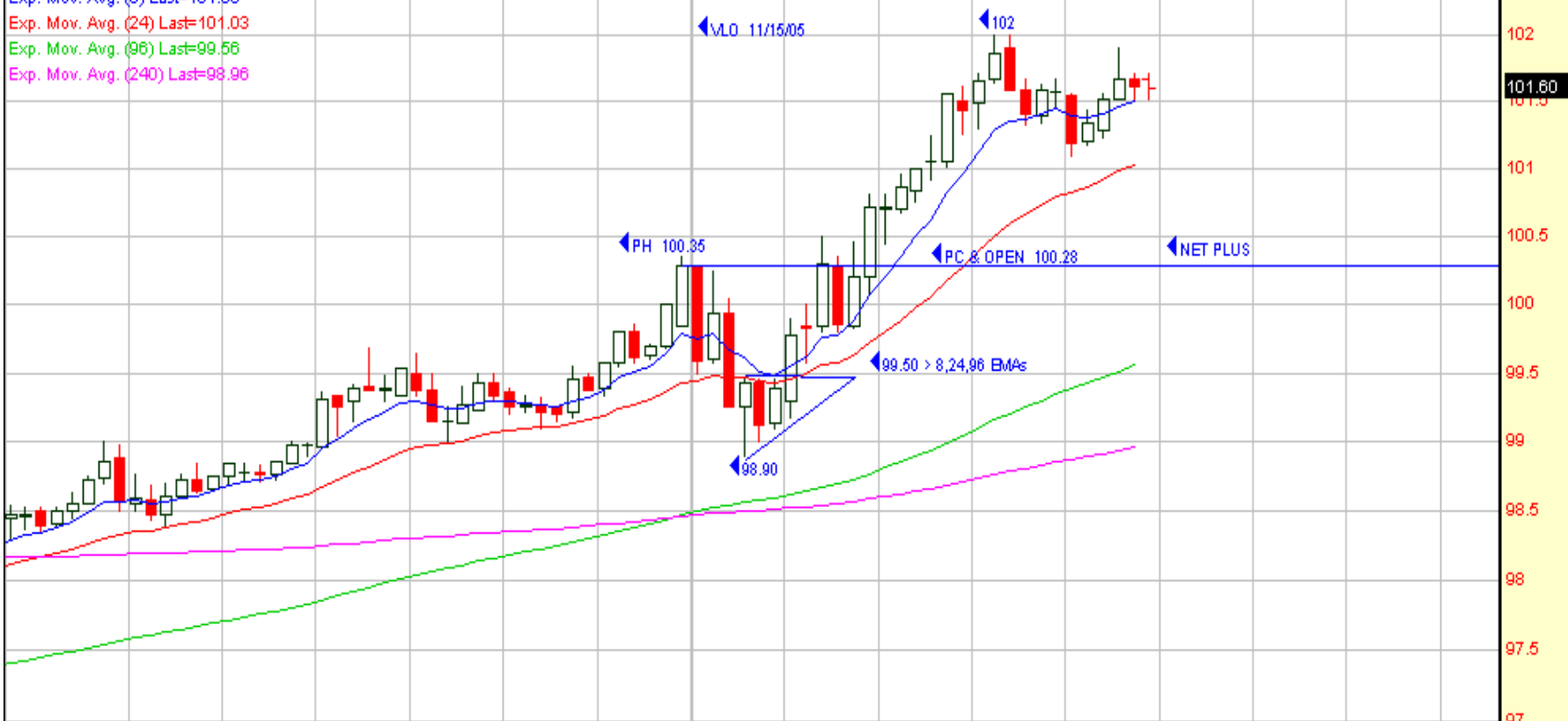
VALERO ENERGY CORP 101.60 1.32 1.32%

Exp. Mov. Avg. (8) Last=101.50

Exp. Mov. Avg. (24) Last=101.03

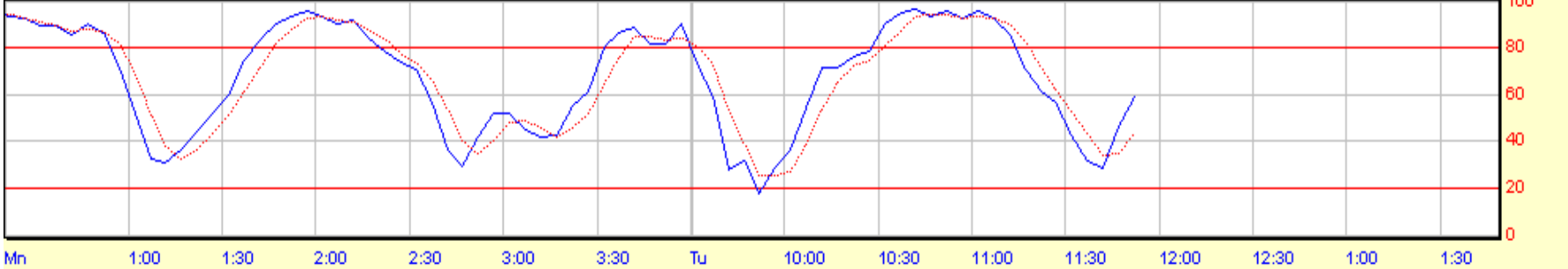
Exp. Mov. Avg. (96) Last=99.56

Exp. Mov. Avg. (240) Last=98.96



© 1998-2004 Prophet Financial Systems, Inc. | Terms of use apply.

Stochastic, Full (8,3,3)



CONOCOPHILLIPS 64.98 1.65 2.61%

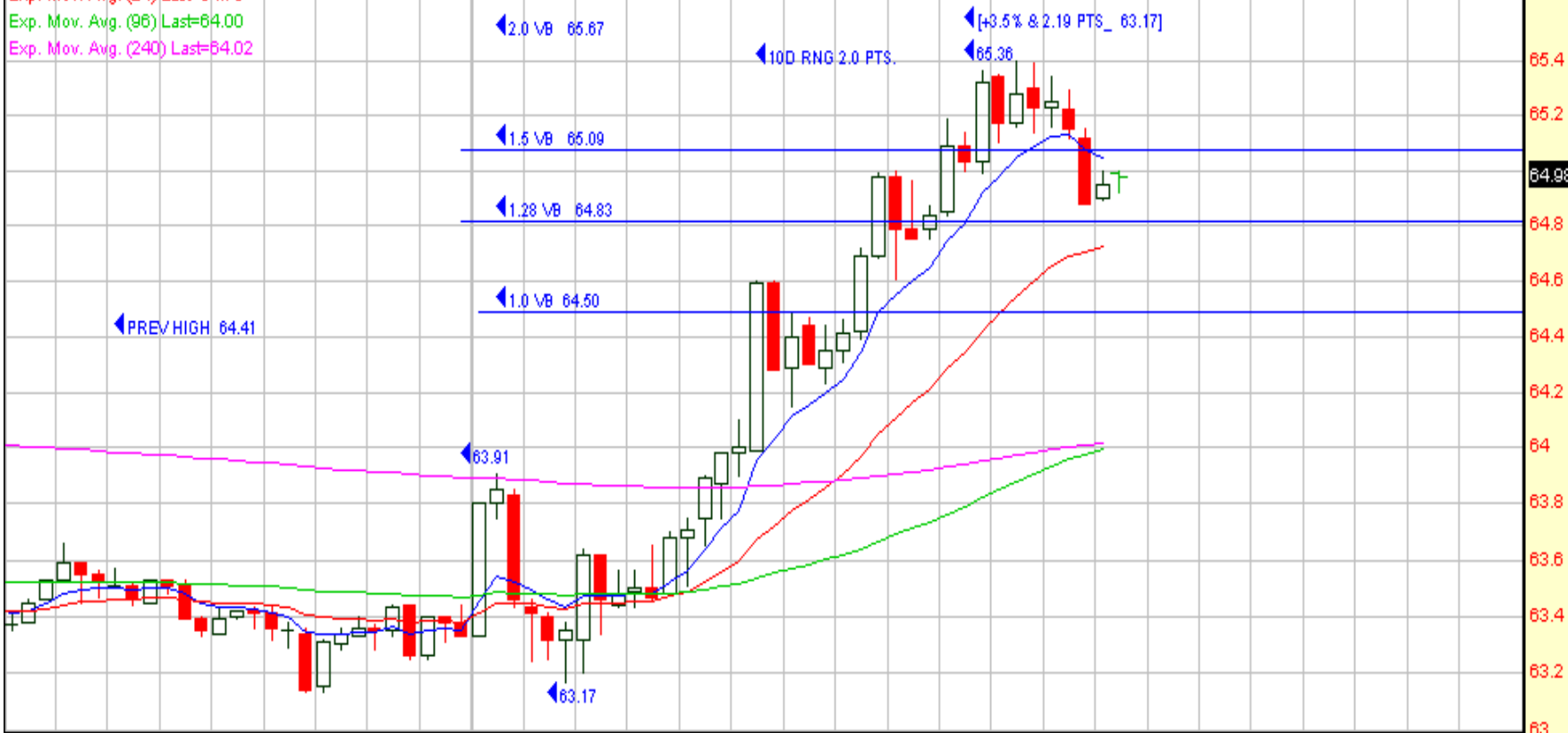
Exp. Mov. Avg. (8) Last=65.05

Exp. Mov. Avg. (24) Last=64.73

Exp. Mov. Avg. (96) Last=64.00

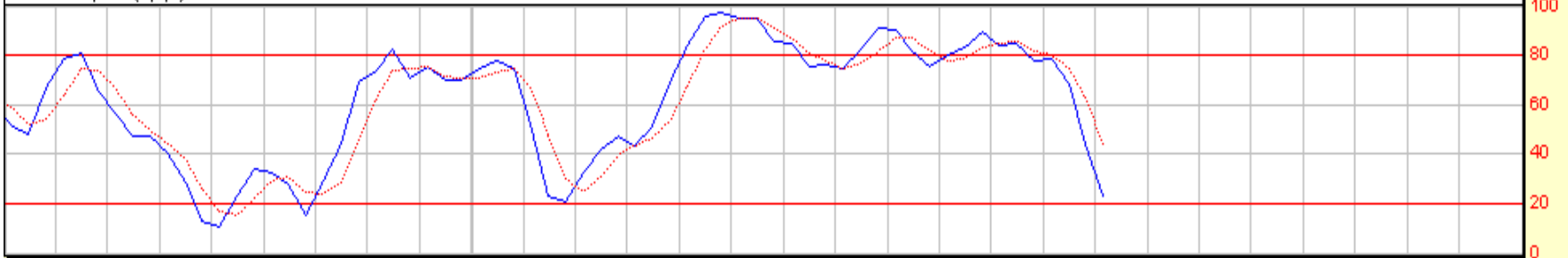
Exp. Mov. Avg. (240) Last=64.02

COP 11/15/05



© 1998-2004 Prophet Financial Systems, Inc. | Terms of use apply.

Stochastic, Full (8,3,3)



Mn 2:00 2:15 2:30 2:45 3:00 3:15 3:30 3:45 Tu 9:45 10:00 10:15 10:30 10:45 11:00 11:15 11:30 11:45 12:00 12:15 12:30 12:45 1:00 1:15 1:30 1:45 2:00 2:15

SPDR ENERGY SECTOR 48.76 1.04 2.18%

Exp. Mov. Avg. (8) Last=48.79
Exp. Mov. Avg. (24) Last=48.61
Exp. Mov. Avg. (96) Last=48.09
Exp. Mov. Avg. (240) Last=47.95

◀ XLE 11/15/05

◀ 2.0 49.31

◀ 1.5 VB 48.92

◀ 1.28 VB 48.74

◀ 1.0 VB 48.52

◀ PREV HIGH 48.20

◀ FLIP TOP

◀ 47.95

◀ 47.80 > 8,24,96,240 EMAs

◀ 47.58

48.9
48.8
48.76
48.7
48.6
48.5
48.4
48.3
48.2
48.1
48
47.9
47.8
47.7
47.6
47.5

© 1998-2004 Prophet Financial Systems, Inc. | Terms of use apply.

Stochastic, Full (8,3,3)

100
80
60
40
20
0

Mn 2:15 2:30 2:45 3:00 3:15 3:30 3:45 Tu 9:45 10:00 10:15 10:30 10:45 11:00 11:15 11:30 11:45 12:00 12:15 12:30 12:45 1:00 1:15 1:30 1:45 2:00 2:15 2:30



© 1998-2004 Prophet Financial Systems, Inc. | Terms of use apply.

Chande Momentum Oscillator (20)



S&p 500 Index 1230.96 0.00 0.00%



© 1998-2004 Prophet Financial Systems, Inc. | Terms of use apply.

Chande Momentum Oscillator (20)



SEMICONDUCTOR HLDRS TR 35.45 0.01 0.03%

Exp. Mov. Avg. (8) Last=35.50
Exp. Mov. Avg. (20) Last=35.33
Exp. Mov. Avg. (34) Last=35.07



© 1998-2004 Prophet Financial Systems, Inc. | Terms of use apply.

Volume (Millions)

