

THE KEVIN HAGGERTY
INNER CIRCLE
TRAINING PROGRAM

July 26th, 2005

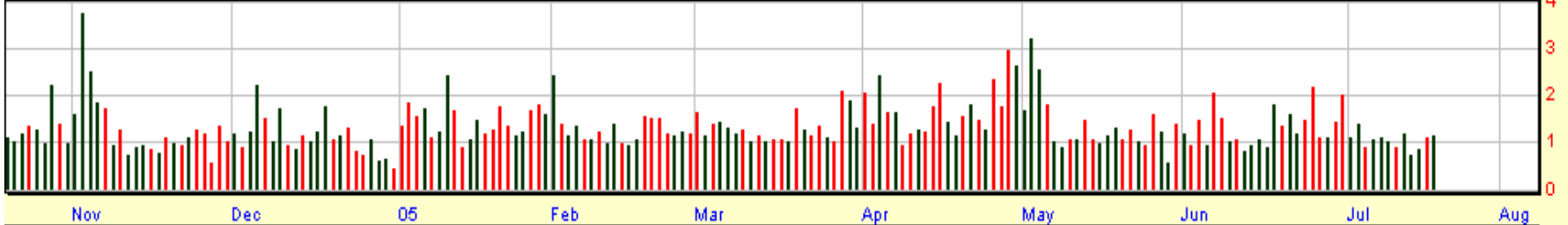
Emerson Elec Co 64.86 0.78 1.22%

Exp. Mov. Avg. (20) Last=64.02
Exp. Mov. Avg. (50) Last=64.64
Exp. Mov. Avg. (89) Last=65.07
Exp. Mov. Avg. (200) Last=64.89
Exp. Mov. Avg. (233) Last=64.62



© 1998-2004 Prophet Financial Systems, Inc. | Terms of use apply.

Volume (Millions)



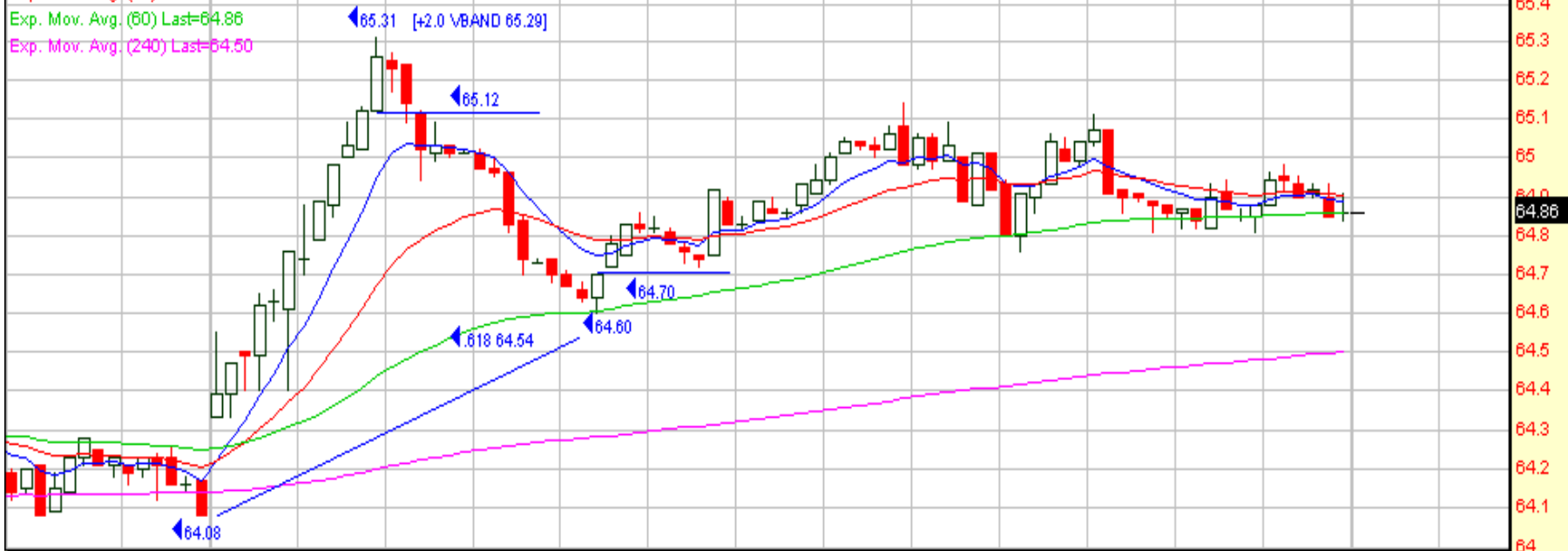
RSI, Wilder (5)



EMERSON ELECTRIC CO 64.86 0.78 1.22%

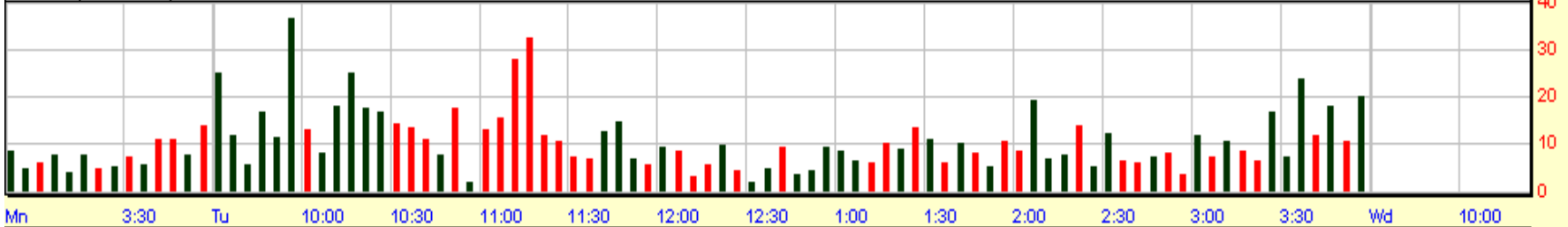
Exp. Mov. Avg. (8) Last=64.89
Exp. Mov. Avg. (20) Last=64.90
Exp. Mov. Avg. (60) Last=64.86
Exp. Mov. Avg. (240) Last=64.50

◀ BMR 5 MIN 7/19/05

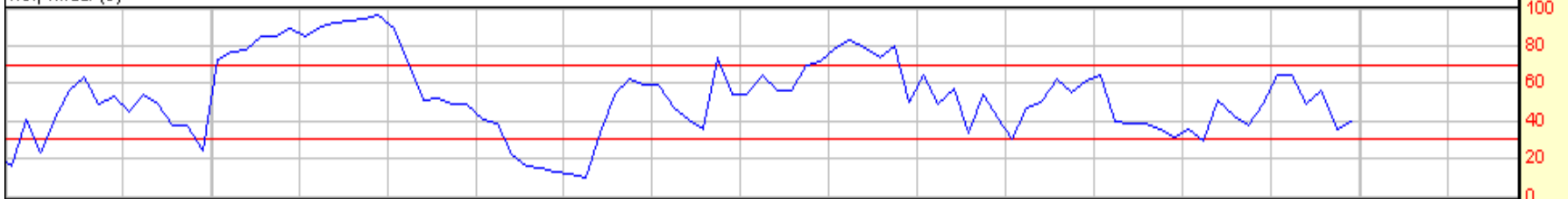


© 1998-2004 Prophet Financial Systems, Inc. | Terms of use apply.

Volume (Thousands)

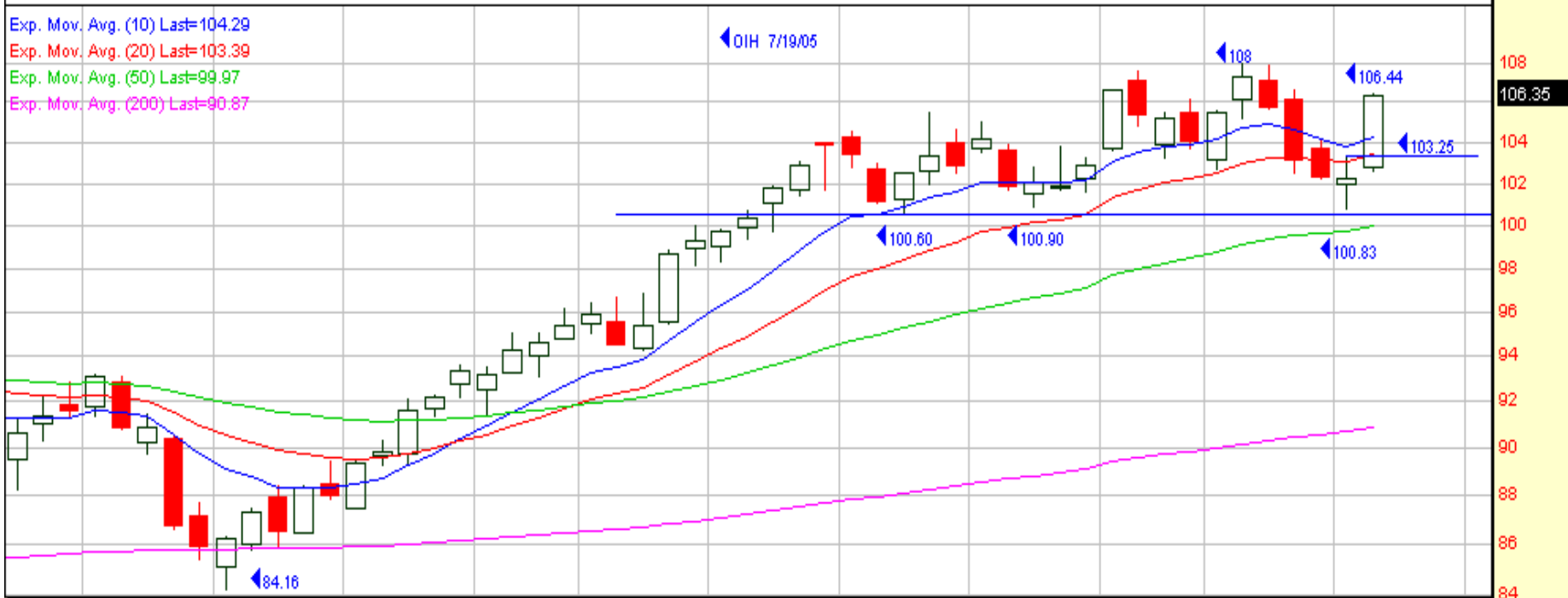


RSI, Wilder (5)



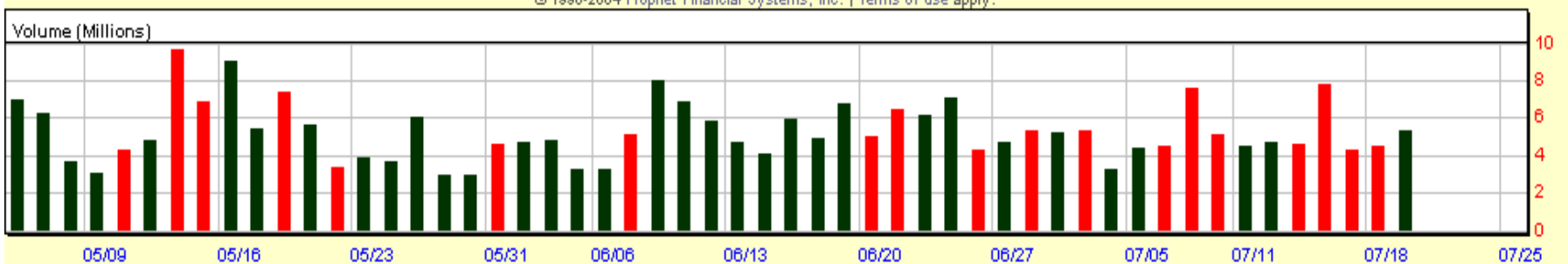
Oil Sv Holdrs Tr Dep Receipt 106.35 4.10 4.01%

Exp. Mov. Avg. (10) Last=104.29
Exp. Mov. Avg. (20) Last=103.39
Exp. Mov. Avg. (50) Last=99.97
Exp. Mov. Avg. (200) Last=90.87

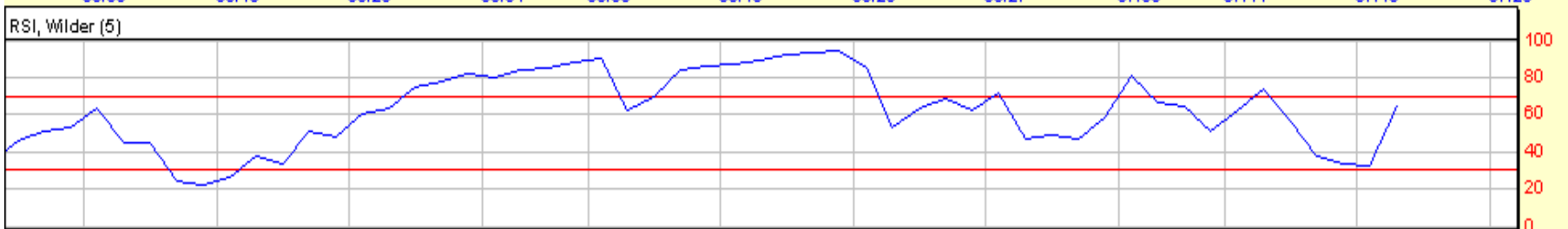


© 1998-2004 Prophet Financial Systems, Inc. | Terms of use apply.

Volume (Millions)

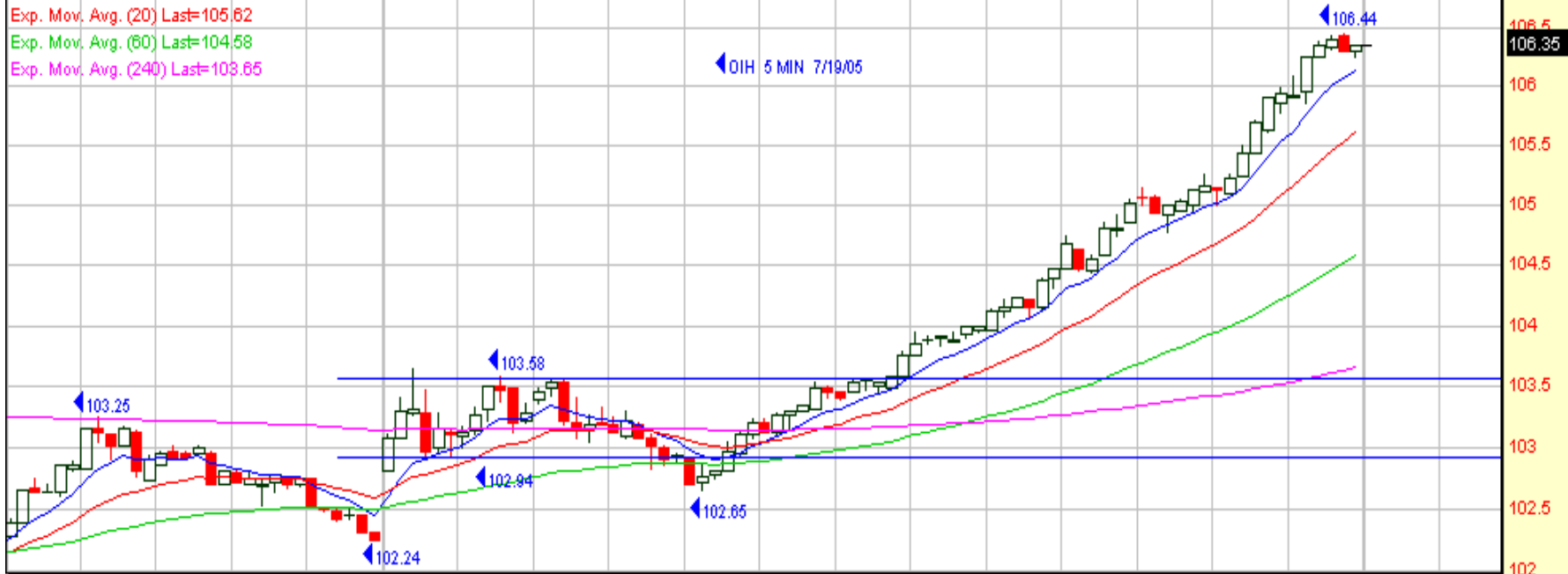


RSI, Wilder (5)

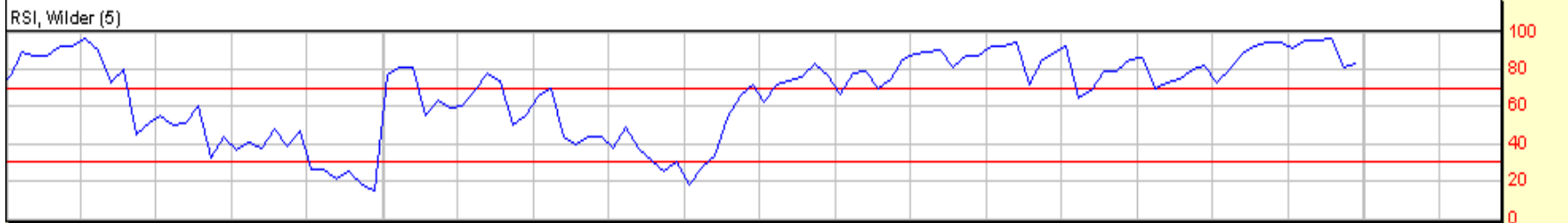
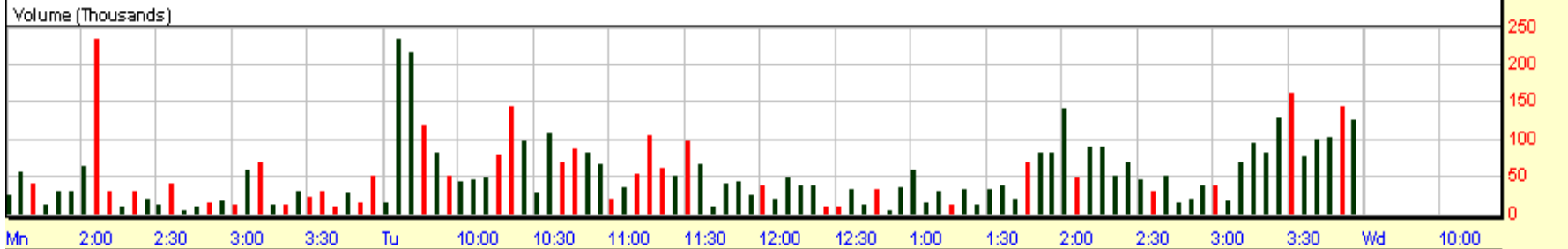


OIL SERVICE HOLDERS TR 106.35 4.10 4.01%

Exp. Mov. Avg. (8) Last=106.13
Exp. Mov. Avg. (20) Last=105.62
Exp. Mov. Avg. (60) Last=104.58
Exp. Mov. Avg. (240) Last=103.65



© 1998-2004 Prophet Financial Systems, Inc. | Terms of use apply.



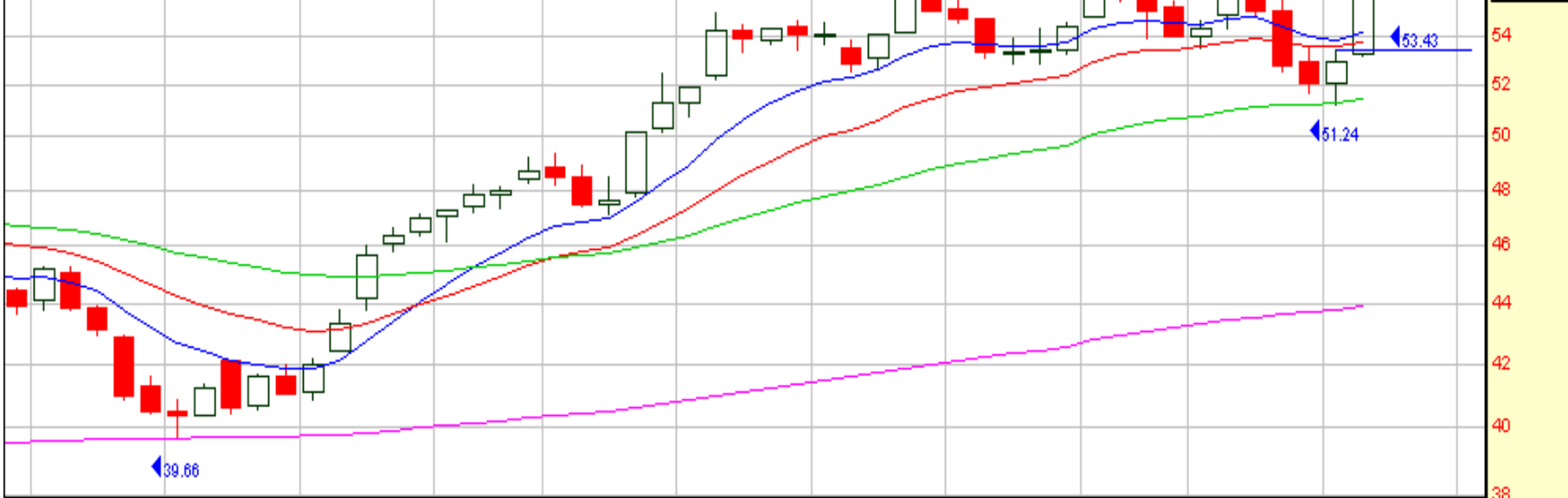
Diamond Offshore Drl 55.87 2.89 5.45%

Exp. Mov. Avg. (10) Last=54.20

Exp. Mov. Avg. (20) Last=53.79

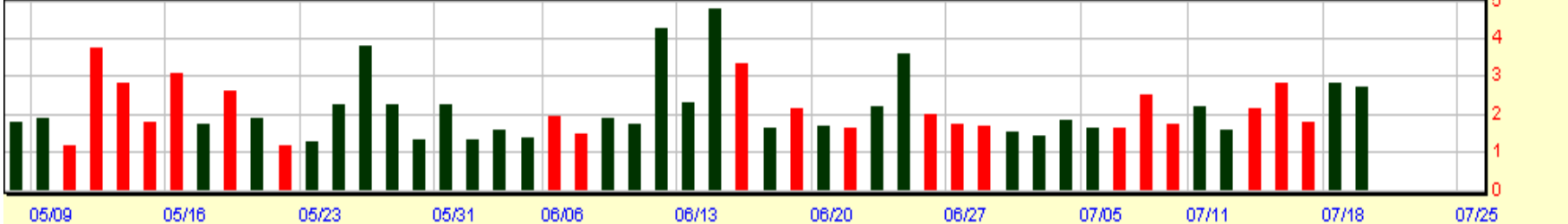
Exp. Mov. Avg. (50) Last=51.52

Exp. Mov. Avg. (200) Last=43.93

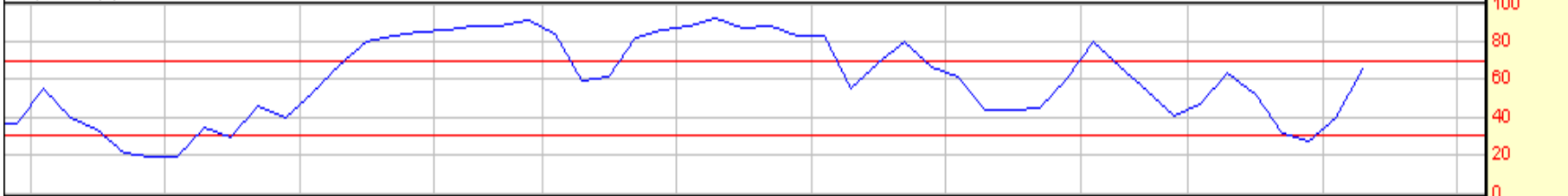


© 1998-2004 Prophet Financial Systems, Inc. | Terms of use apply.

Volume (Millions)



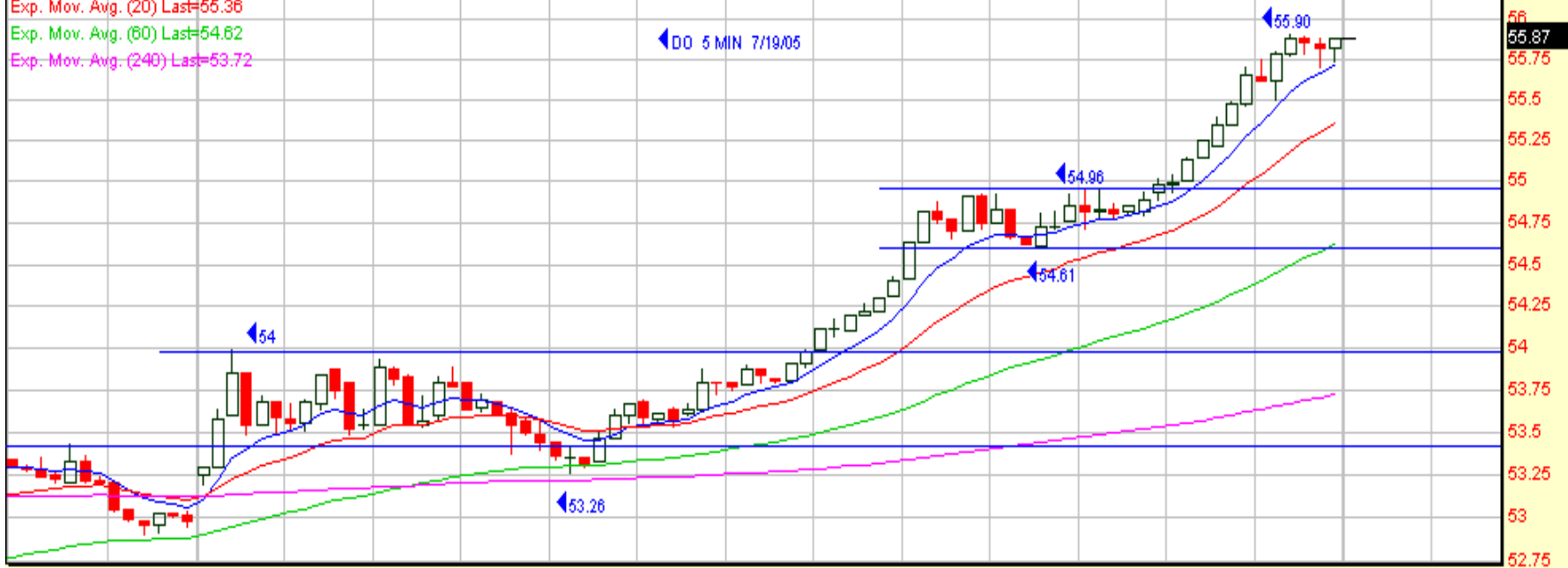
RSI, Wilder (5)



DIAMOND OFFSHORE DRILLING 55.87 2.89 5.45%

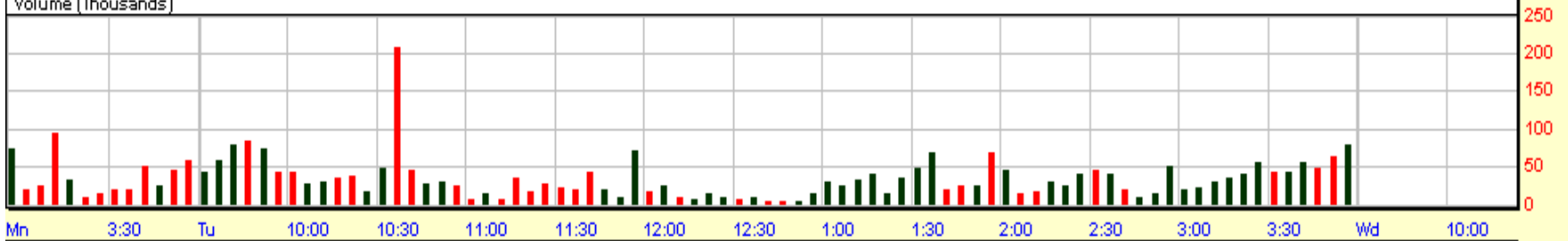
Exp. Mov. Avg. (8) Last=55.71
Exp. Mov. Avg. (20) Last=55.36
Exp. Mov. Avg. (60) Last=54.62
Exp. Mov. Avg. (240) Last=53.72

◀ DO 5 MIN 7/19/05

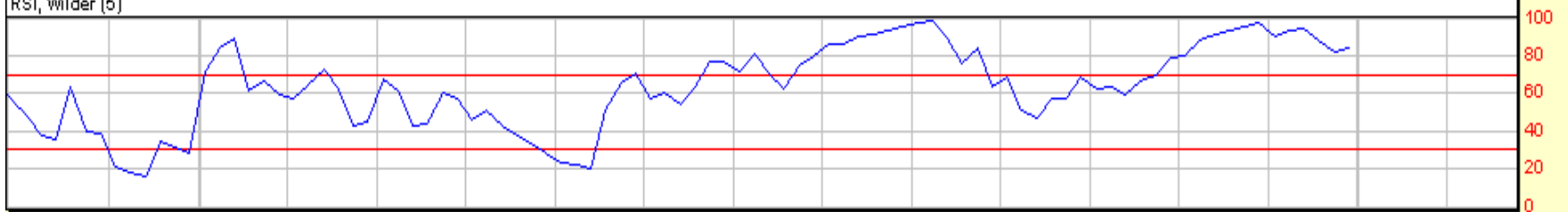


© 1998-2004 Prophet Financial Systems, Inc. | Terms of use apply.

Volume (Thousands)



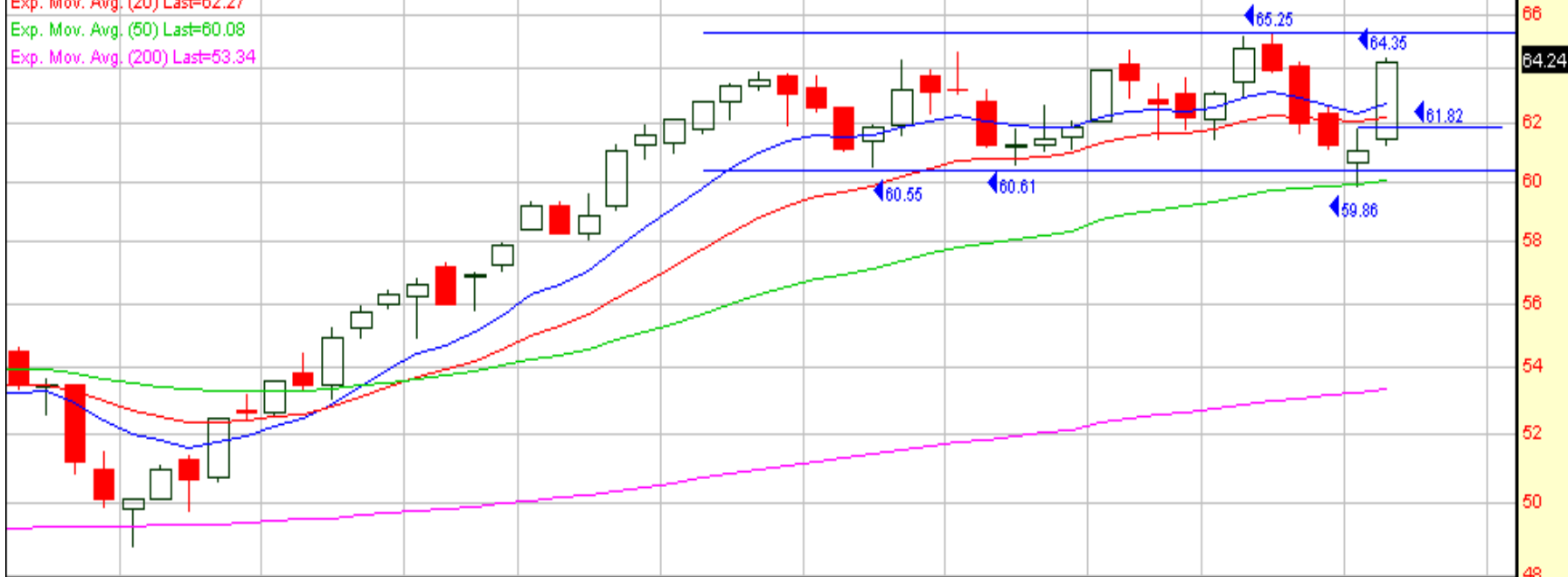
RSI, Wilder (5)



Noble Corp 64.24 3.20 5.24%

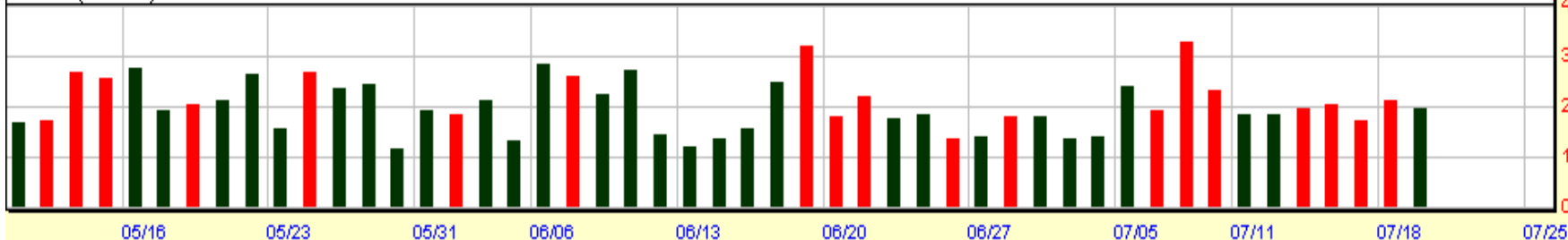
Exp. Mov. Avg. (10) Last=62.70
Exp. Mov. Avg. (20) Last=62.27
Exp. Mov. Avg. (50) Last=60.08
Exp. Mov. Avg. (200) Last=53.34

NE 7/19/05

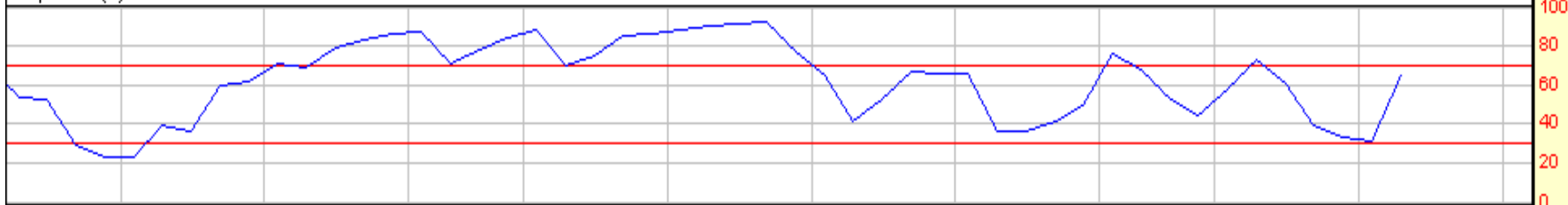


© 1998-2004 Prophet Financial Systems, Inc. | Terms of use apply.

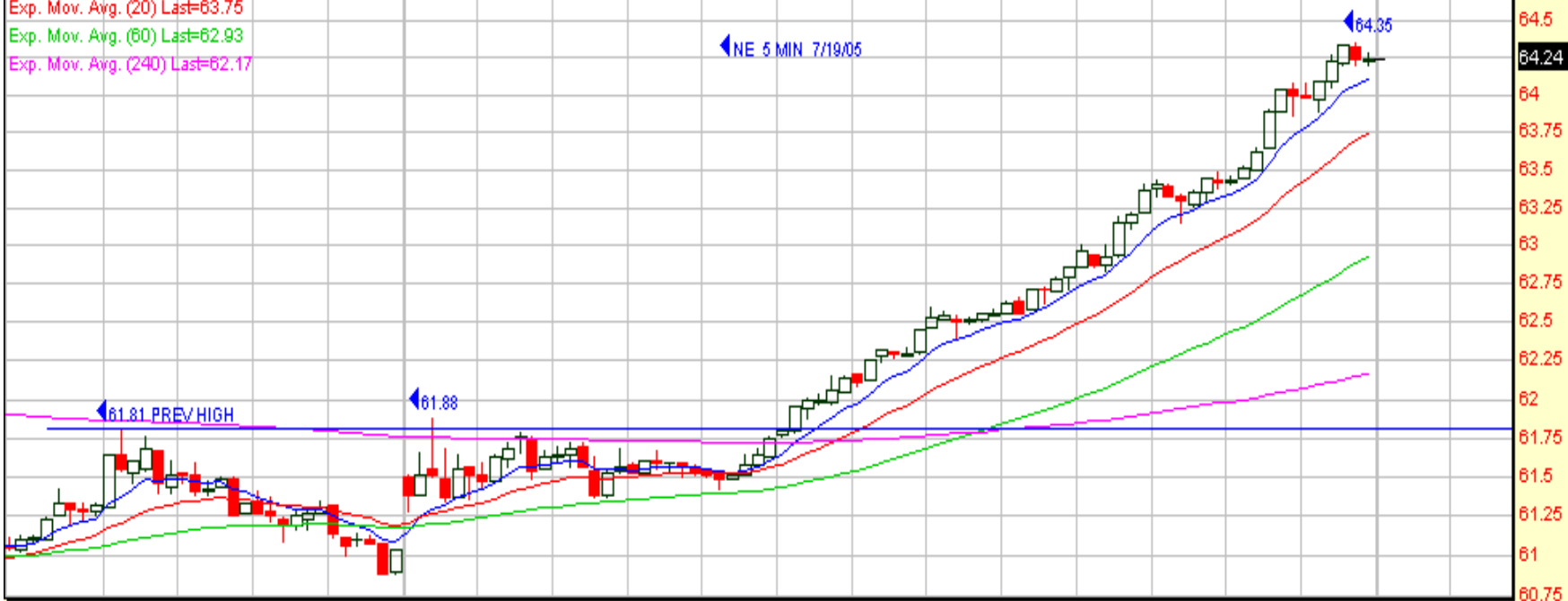
Volume (Millions)



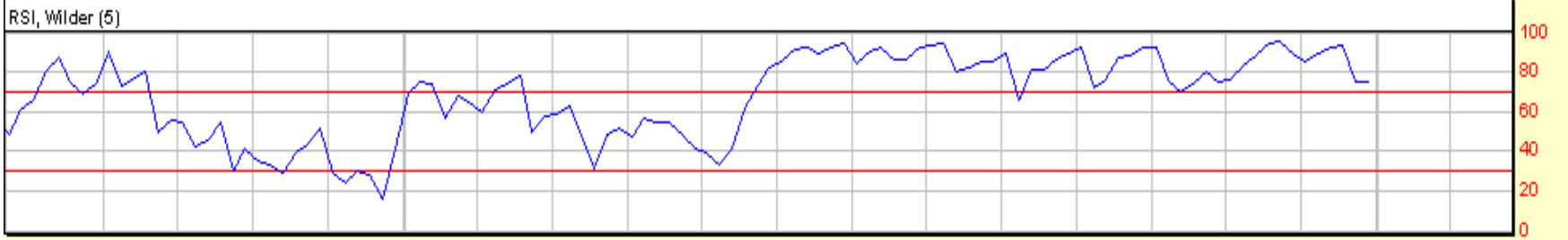
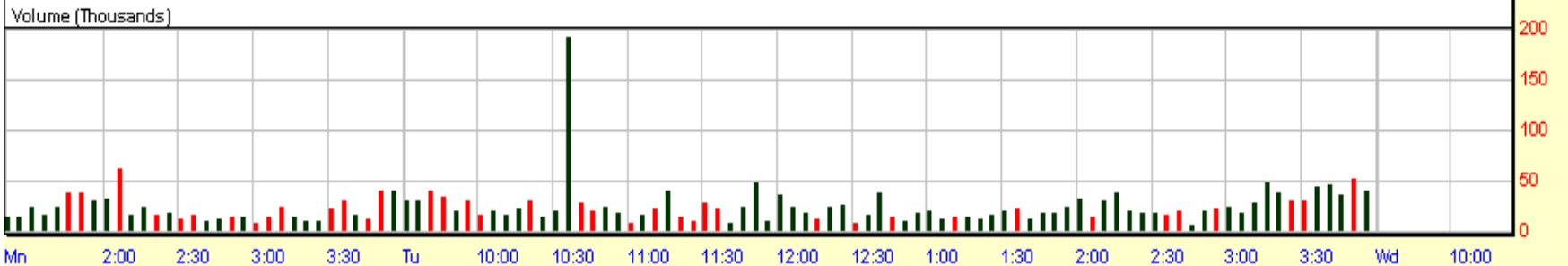
RSI, Wilder (5)



Exp. Mov. Avg. (8) Last=64.11
Exp. Mov. Avg. (20) Last=63.75
Exp. Mov. Avg. (60) Last=62.93
Exp. Mov. Avg. (240) Last=62.17



© 1998-2004 Prophet Financial Systems, Inc. | Terms of use apply.



Rowan Cos Inc 30.60 1.20 4.08%

Exp. Mov. Avg. (10) Last=30.48

Exp. Mov. Avg. (20) Last=30.33

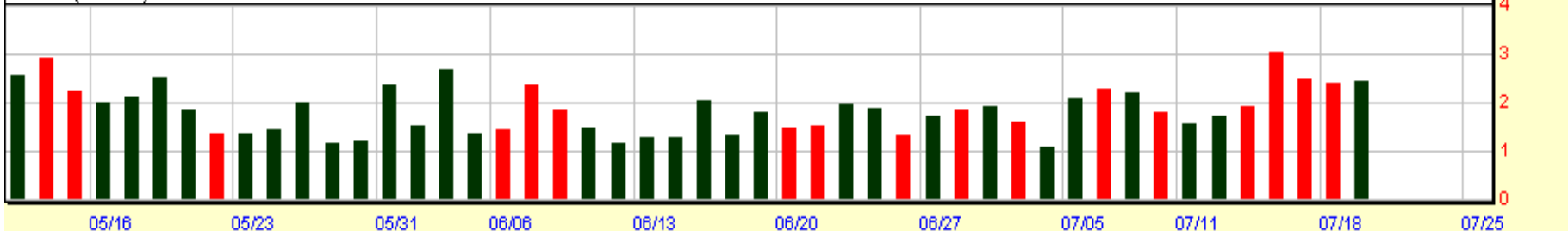
Exp. Mov. Avg. (50) Last=29.55

Exp. Mov. Avg. (200) Last=27.84

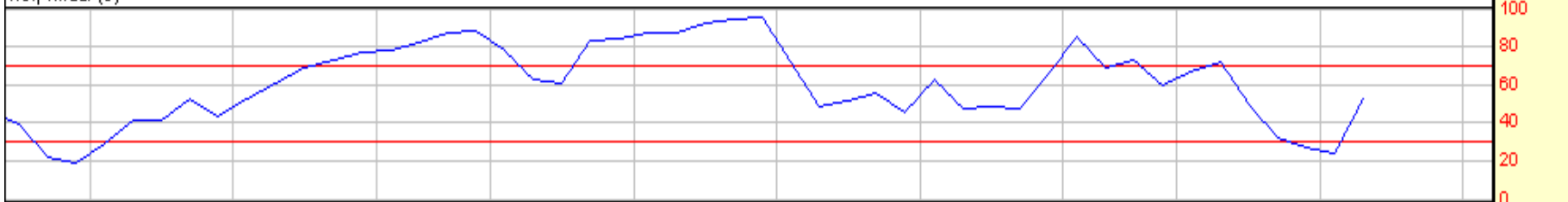


© 1998-2004 Prophet Financial Systems, Inc. | Terms of use apply.

Volume (Millions)



RSI, Wilder (5)

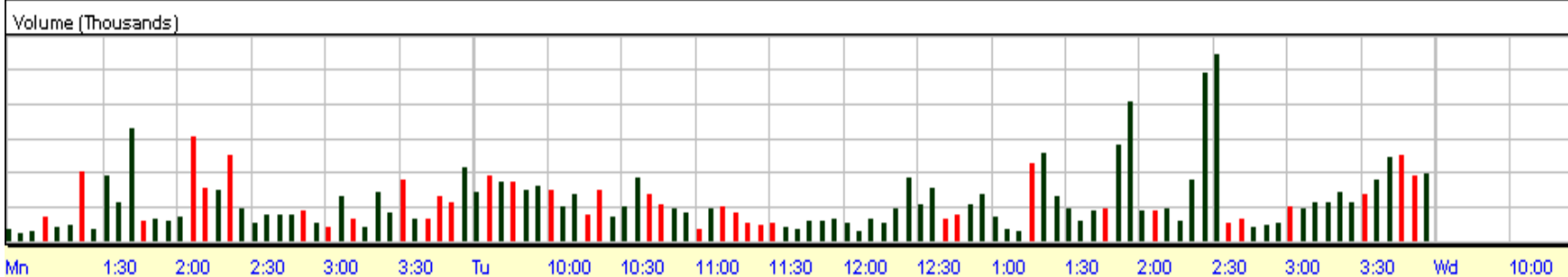


Exp. Mov. Avg. (8) Last=30.57
Exp. Mov. Avg. (20) Last=30.40
Exp. Mov. Avg. (60) Last=30.02
Exp. Mov. Avg. (240) Last=29.88

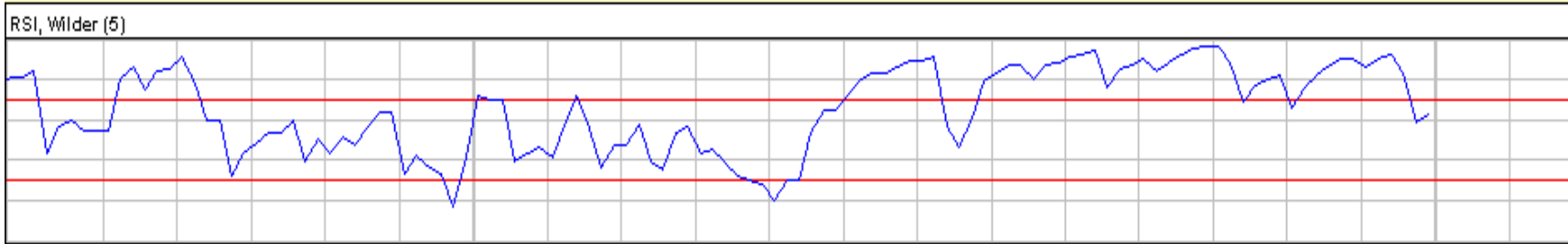


30.60
30.5
30.4
30.3
30.2
30.1
30
29.9
29.8
29.7
29.6
29.5
29.4
29.3
29.2

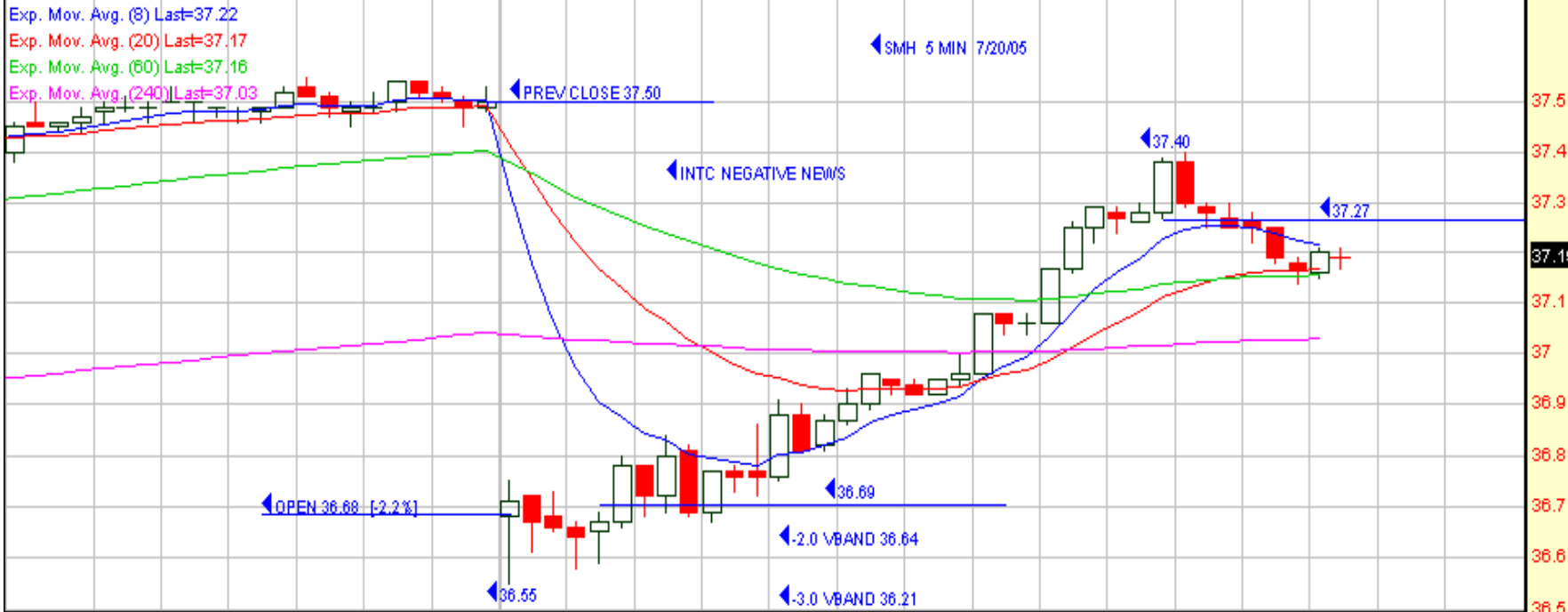
© 1998-2004 Prophet Financial Systems, Inc. | Terms of use apply.



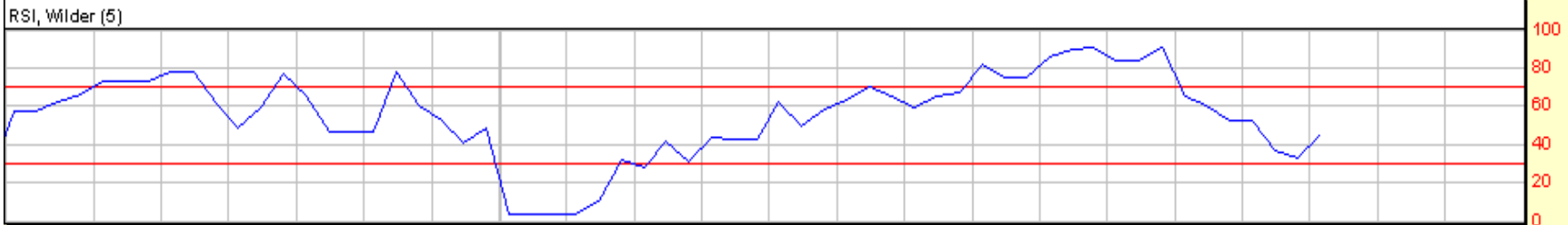
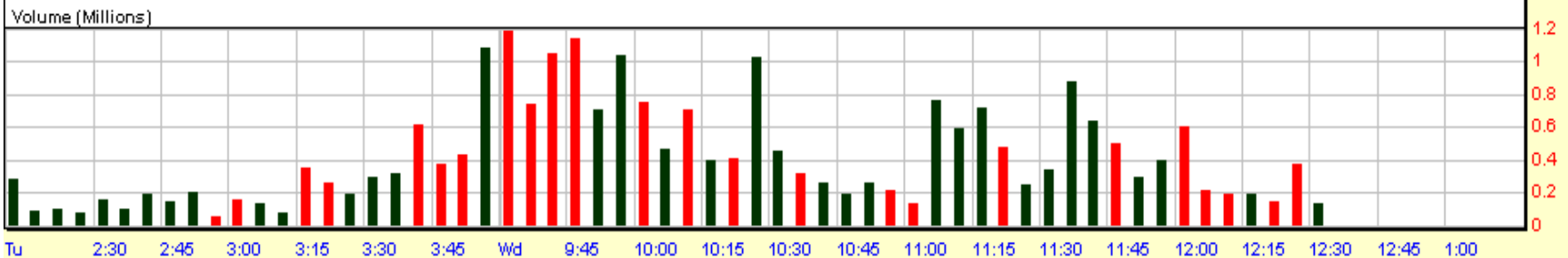
150
125
100
75
50
25
0



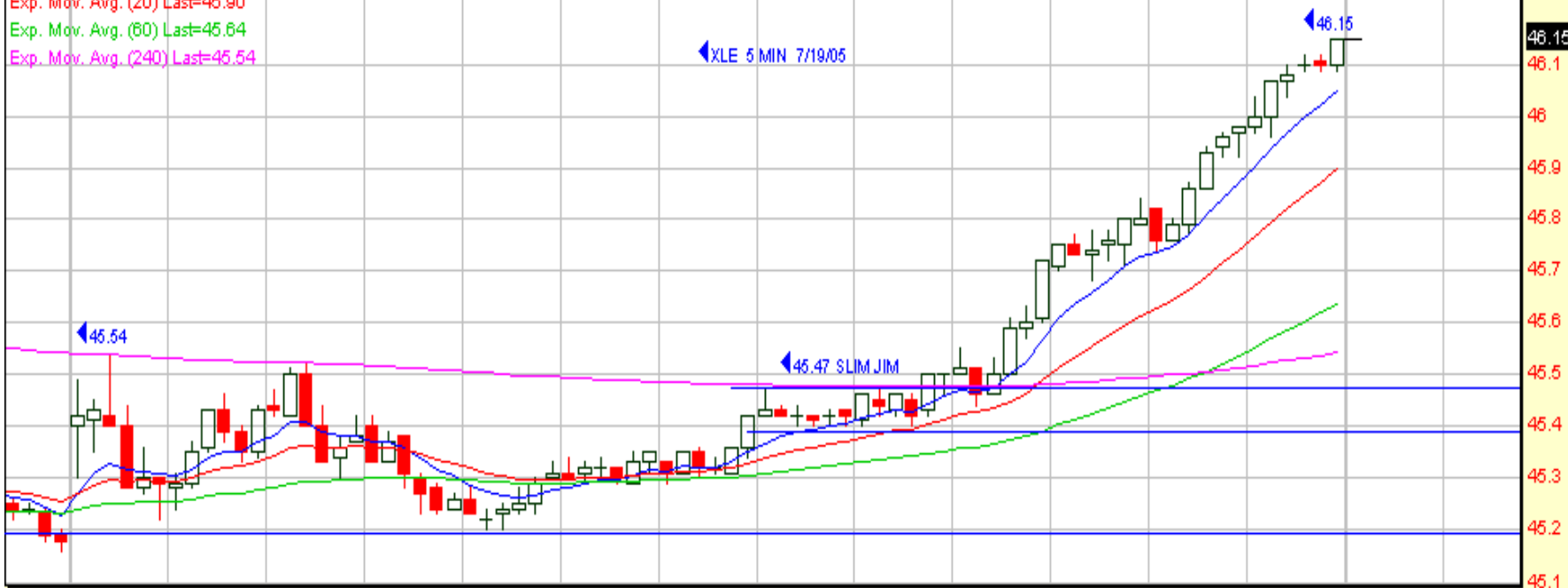
100
80
60
40
20
0



© 1998-2004 Prophet Financial Systems, Inc. | Terms of use apply.



Exp. Mov. Avg. (8) Last=46.05
Exp. Mov. Avg. (20) Last=45.90
Exp. Mov. Avg. (60) Last=45.64
Exp. Mov. Avg. (240) Last=45.54

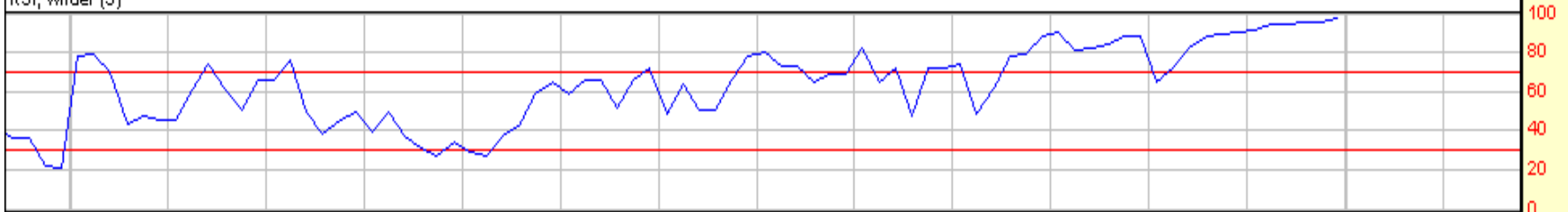


© 1998-2004 Prophet Financial Systems, Inc. | Terms of use apply.

Volume (Millions)

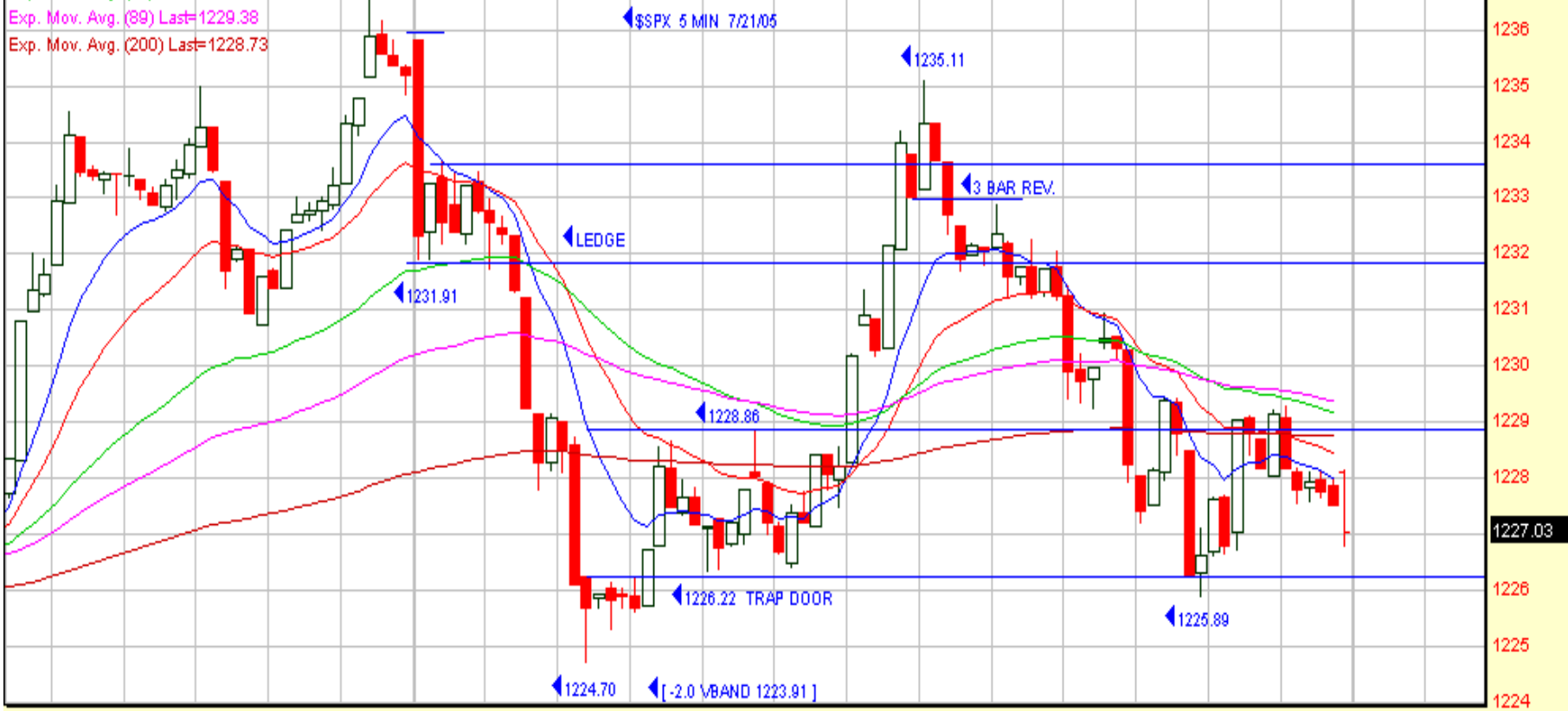


RSI, Wilder (5)



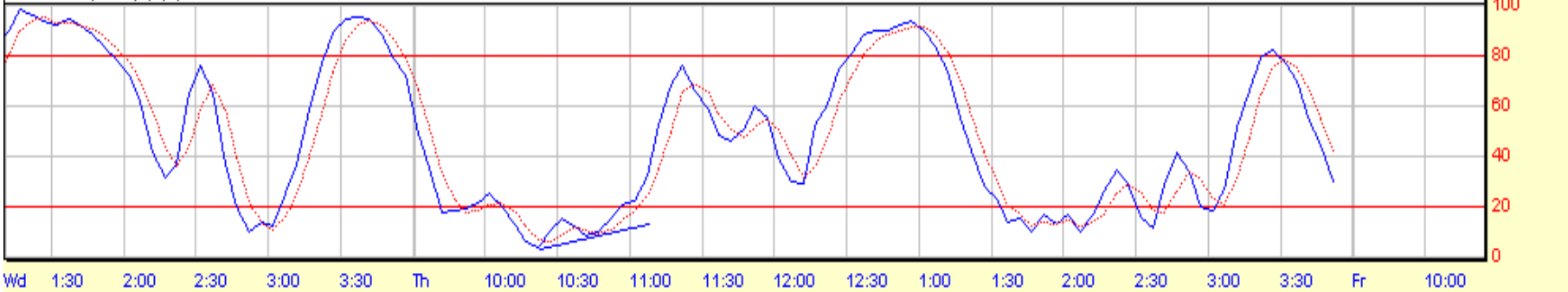
S&p 500 Index 1227.03 -8.17 -0.66%

Exp. Mov. Avg. (10) Last=1228.00
Exp. Mov. Avg. (20) Last=1228.43
Exp. Mov. Avg. (50) Last=1229.17
Exp. Mov. Avg. (89) Last=1229.38
Exp. Mov. Avg. (200) Last=1228.73



© 1998-2004 Prophet Financial Systems, Inc. | Terms of use apply.

Stochastic, Full (8,3,3)

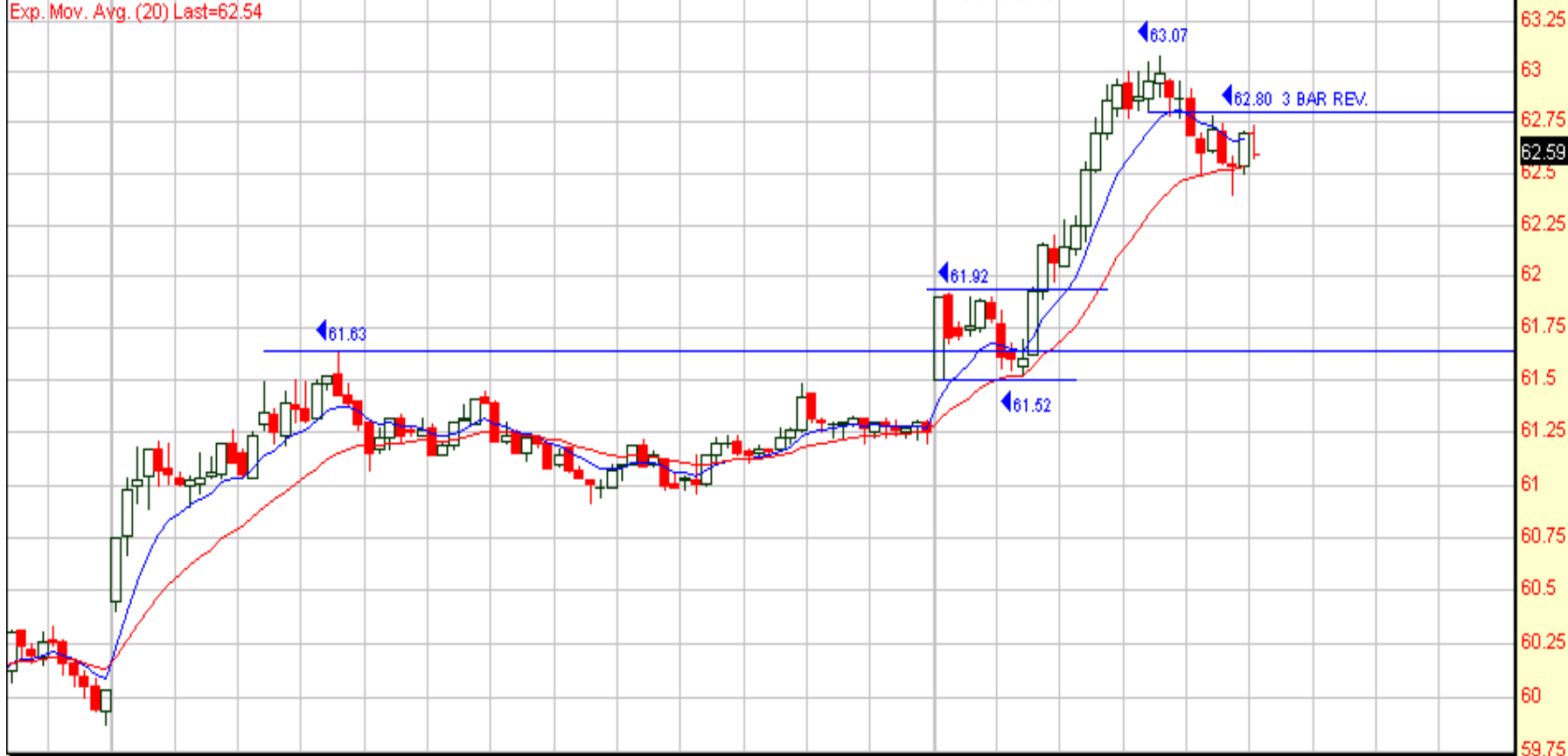


CONOCOPHILLIPS 62.59 1.34 2.19%

Exp. Mov. Avg. (8) Last=62.67

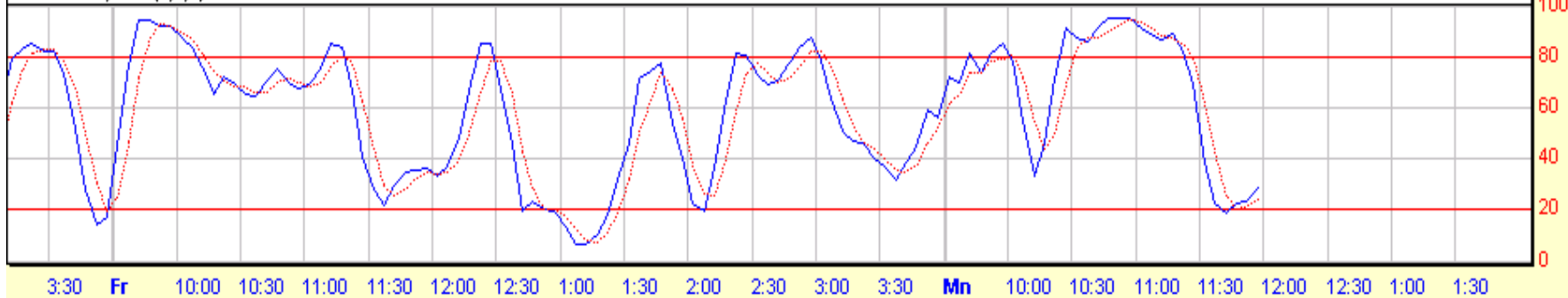
Exp. Mov. Avg. (20) Last=62.54

◀ COP 7/25/05



© 1998-2004 Prophet Financial Systems, Inc. | Terms of use apply.

Stochastic, Full (8,3,3)



Exp. Mov. Avg. (8) Last=84.50
Exp. Mov. Avg. (20) Last=84.27
Exp. Mov. Avg. (60) Last=84.00
Exp. Mov. Avg. (240) Last=83.21



© 1998-2004 Prophet Financial Systems, Inc. | Terms of use apply.

Volume (Millions)

