

THE KEVIN HAGGERTY
INNER CIRCLE
TRAINING PROGRAM

December 6th, 2005

SECTION 1

1. TOP DOWN APPROACH

SECTOR

INDUSTRY GROUP

STOCK

RELATIVE PERFORMANCE STOCK TO GROUP,SECTOR, MARKET

2. - ATL-BTL FOCUS LIST

-BEST DAILY CHART PATTERNS

-STOCK SCREENS [COMMENTARY PAGE]

-IDENTIFY ANY COMMON THREADS ON SCREENS

3. SET UP YOUR MONITOR SCREENS WITH FINAL FOCUS STOCKS FOR DAY

4. DAILY CHART ENTRY LEVELS FOR PATTERN

- 5. POTENTIAL RST ZONES, FIB LEVELS [RT & EXT]
SUPPORT/RESISTANCE, MOVING AVG.**
- 6. V. BAND LEVELS FOR MAJOR INDEXES**
- 7. HOW THEY OPEN [MOST UP/DOWN, SECTORS etc.]
IS EARLY READ ON TRAP DOORS, OR`s, POTENTIAL
RETRACEMENTS etc**
- 8. CHOPPY OR TREND DAY?**
- 9. UVOL/DVOL, ADV-DEC, TRIN, VIX, COMMODITIES [BONDS,OIL,GOLD]**
- 10. TRADING RANGE/CHOPPY MEANS MORE OF SCALPING MODE WITH
SMALLER GAINS/TIGHTER STOPS**

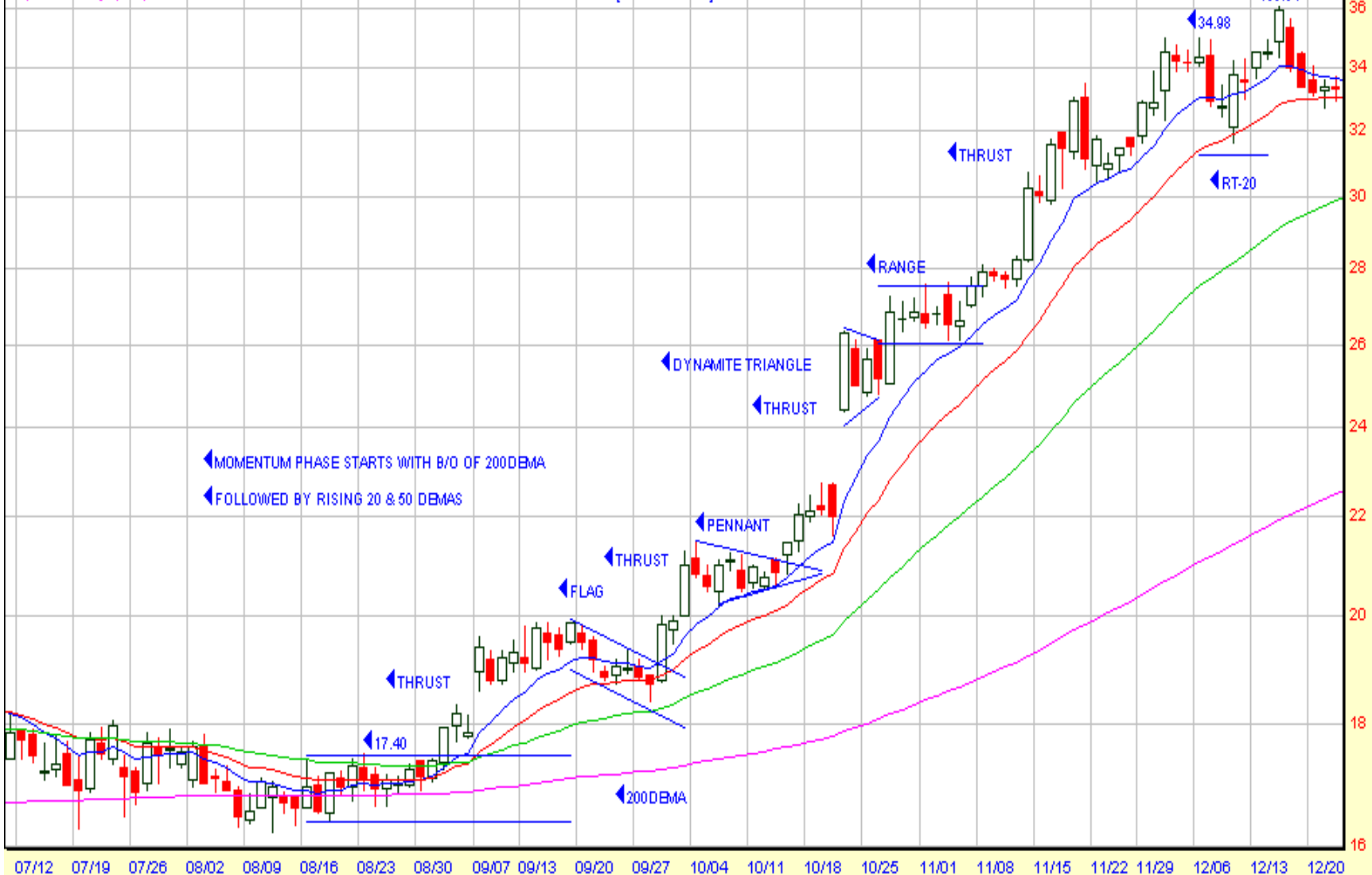
SECTION 2

INTERMARKET ANALYSIS

- 1. PROGRAM TRADING**
- 2. STOCK-BONDS**
- 3. BONDS-COMMODITIES**
- 4. COMMODITIES-DOLLAR**

Exp. Mov. Avg. (10) Last=22.58
Exp. Mov. Avg. (20) Last=22.67
Exp. Mov. Avg. (50) Last=22.72
Exp. Mov. Avg. (200) Last=24.53

◀ VRSN [DAILY CHART] 8/2004-12/2004



Baker Hughes Intl 60.16 0.33 0.55%

Exp. Mov. Avg. (10) Last=58.42
Exp. Mov. Avg. (20) Last=57.33
Exp. Mov. Avg. (50) Last=56.47
Exp. Mov. Avg. (200) Last=52.24

