

**THE KEVIN HAGGERTY**  
**INNER CIRCLE**  
**TRAINING PROGRAM**

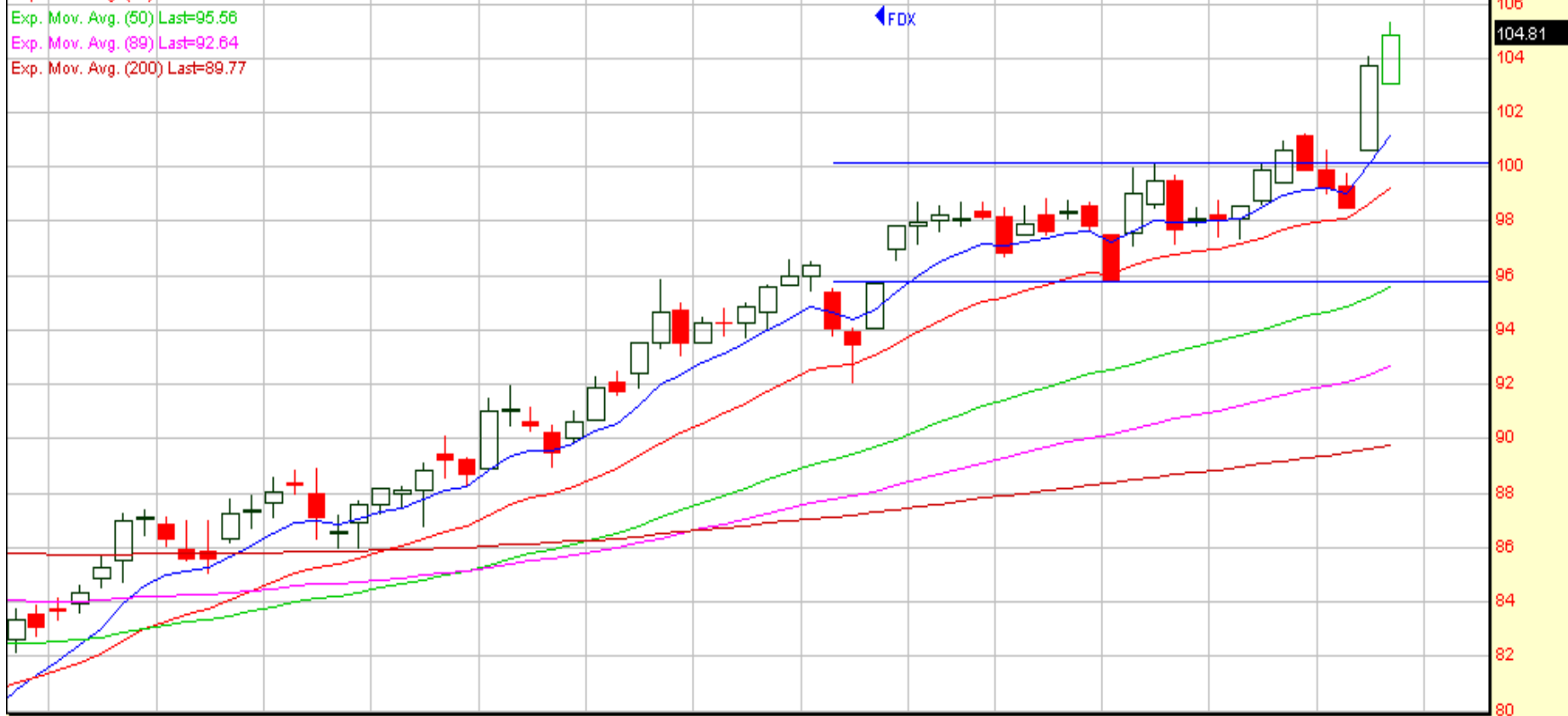
December 22nd, 2005

|                      |              |               |                |            |                    |                    | <u>All S&amp;P500 stocks</u> |            |            |                | <u>Above the line</u> |                 |                 |              | <u>Below the line</u> |               |               |                |
|----------------------|--------------|---------------|----------------|------------|--------------------|--------------------|------------------------------|------------|------------|----------------|-----------------------|-----------------|-----------------|--------------|-----------------------|---------------|---------------|----------------|
| <u>Symbol</u>        | <u>Close</u> | <u>Pt Chg</u> | <u>Pct Chg</u> | <u>Vol</u> | <u>Pct 30D Vol</u> | <u>Avg 30D Vol</u> | <u>CR1</u>                   | <u>CR2</u> | <u>Rng</u> | <u>10D Rng</u> | <u>5D% Chg</u>        | <u>20D% Chg</u> | <u>52W %Chg</u> | <u>H 52W</u> | <u>L 52W</u>          | <u>EMA 20</u> | <u>EMA 50</u> | <u>EMA 200</u> |
| <a href="#">NKE</a>  | 85.75        | -2.73         | -3.09          | 8640       | 494                | 1748               | 83                           | 87         | 2.42       | 1.77           | -6.22                 | -1.44           | -5.85           | 92.34        | 75.10                 | 87.31         | 85.80         | 83.31          |
| <a href="#">SO</a>   | 34.87        | -0.45         | -1.27          | 10349      | 458                | 2258               | 9                            | 88         | 0.74       | 0.48           | -1.44                 | 0.84            | 3.14            | 36.47        | 31.14                 | 35.03         | 34.53         | 34.16          |
| <a href="#">JBL</a>  | 37.04        | 2.50          | 7.24           | 4827       | 409                | 1182               | 91                           | 24         | 3.80       | 0.98           | 5.62                  | 13.52           | 47.39           | 37.40        | 21.80                 | 34.35         | 32.09         | 30.06          |
| <a href="#">ERTS</a> | 53.46        | 0.35          | 0.66           | 14473      | 391                | 3704               | 45                           | 56         | 2.33       | 1.44           | -0.41                 | -10.75          | -13.37          | 71.16        | 47.45                 | 55.66         | 56.51         | 56.50          |
| <a href="#">SNV</a>  | 26.80        | -1.27         | -4.52          | 2684       | 369                | 727                | 32                           | 15         | 1.56       | 0.51           | -5.70                 | -4.80           | -7.17           | 30.10        | 26.30                 | 28.06         | 27.67         | 28.29          |
| <a href="#">FDX</a>  | 103.70       | 5.21          | 5.29           | 4399       | 389                | 1525               | 90                           | 0          | 3.40       | 1.63           | 3.86                  | 5.55            | 4.09            | 104.03       | 76.81                 | 98.66         | 94.88         | 88.49          |
| <a href="#">GM</a>   | 19.05        | -0.80         | -4.03          | 51816      | 276                | 18760              | 4                            | 15         | 1.70       | 0.88           | -15.11                | -18.13          | -52.54          | 40.82        | 18.99                 | 22.17         | 24.67         | 30.26          |
| <a href="#">ACV</a>  | 45.71        | 0.88          | 1.96           | 781        | 235                | 333                | 12                           | 9          | 0.48       | 0.69           | -0.74                 | 3.53            | -5.30           | 56.31        | 41.70                 | 44.40         | 43.65         | 44.37          |
| <a href="#">ANDW</a> | 10.75        | 0.11          | 1.03           | 2830       | 228                | 1241               | 64                           | 15         | 0.22       | 0.30           | -4.19                 | 0.56            | -18.81          | 14.19        | 10.07                 | 11.06         | 10.76         | 11.84          |
| <a href="#">BF-B</a> | 69.81        | -1.62         | -2.27          | 558        | 221                | 252                | 5                            | 43         | 2.28       | 1.25           | -2.66                 | 4.20            | 42.75           | 72.38        | 46.59                 | 69.84         | 65.33         | 59.44          |
| <a href="#">NOVL</a> | 9.10         | 0.28          | 3.17           | 12719      | 219                | 5813               | 69                           | 90         | 0.54       | 0.27           | 5.32                  | 14.18           | 31.12           | 9.27         | 4.94                  | 8.38          | 7.89          | 6.65           |
| <a href="#">UNH</a>  | 63.79        | 0.73          | 1.16           | 11294      | 219                | 5149               | 34                           | 63         | 1.08       | 1.34           | 1.25                  | 5.14            | 49.25           | 64.50        | 42.50                 | 62.10         | 59.59         | 52.80          |
| <a href="#">BMET</a> | 35.31        | -0.98         | -2.70          | 4198       | 215                | 1949               | 69                           | 18         | 0.59       | 0.77           | -6.66                 | -3.13           | -20.35          | 45.71        | 32.50                 | 36.98         | 35.93         | 36.86          |
| <a href="#">BBBY</a> | 41.24        | 0.42          | 1.03           | 3468       | 206                | 1681               | 42                           | 53         | 1.28       | 1.08           | -2.21                 | -4.23           | 4.96            | 46.99        | 35.50                 | 42.41         | 41.17         | 40.67          |
| <a href="#">LNC</a>  | 53.73        | 2.23          | 4.33           | 2174       | 200                | 1090               | 90                           | 30         | 1.65       | 0.74           | 2.42                  | 3.35            | 16.12           | 54.41        | 41.59                 | 52.08         | 50.65         | 48.07          |
| <a href="#">CC</a>   | 22.90        | 0.35          | 1.55           | 5990       | 193                | 3102               | 78                           | 41         | 0.41       | 0.70           | 5.87                  | 11.54           | 49.19           | 23.02        | 13.40                 | 21.52         | 19.53         | 17.38          |
| <a href="#">UPS</a>  | 76.62        | 1.39          | 1.85           | 5395       | 192                | 2817               | 34                           | 39         | 1.88       | 1.29           | 0.64                  | -3.96           | -11.63          | 87.09        | 66.10                 | 76.85         | 74.98         | 72.23          |
| <a href="#">FDO</a>  | 24.37        | 1.29          | 5.59           | 2701       | 184                | 1464               | 64                           | 62         | 1.46       | 0.66           | 6.19                  | 3.92            | -18.03          | 35.25        | 19.40                 | 22.88         | 22.62         | 24.38          |
| <a href="#">ROH</a>  | 48.61        | 1.74          | 3.71           | 1547       | 173                | 896                | 79                           | 7          | 1.84       | 1.02           | -0.90                 | 8.84            | 9.88            | 50.00        | 39.47                 | 46.53         | 44.37         | 44.90          |
| <a href="#">BMS</a>  | 27.49        | 0.66          | 2.46           | 602        | 170                | 354                | 55                           | 56         | 0.78       | 0.45           | 0.66                  | 0.77            | -6.11           | 32.50        | 23.20                 | 27.35         | 26.26         | 27.03          |
| <a href="#">KSE</a>  | 36.04        | -0.09         | -0.25          | 1451       | 168                | 861                | 25                           | 90         | 0.51       | 0.51           | 4.22                  | 5.94            | -9.17           | 41.03        | 32.66                 | 34.27         | 34.17         | 37.62          |
| <a href="#">CTXS</a> | 28.24        | 0.86          | 3.14           | 2504       | 167                | 1497               | 90                           | 48         | 0.88       | 0.61           | 4.25                  | 1.33            | 11.44           | 28.68        | 20.70                 | 27.34         | 27.00         | 24.26          |
| <a href="#">BDK</a>  | 88.51        | 1.33          | 1.53           | 714        | 161                | 444                | 87                           | 12         | 1.49       | 1.29           | 4.34                  | 1.88            | 3.12            | 93.71        | 75.70                 | 86.33         | 83.90         | 84.81          |
| <a href="#">SEE</a>  | 55.81        | 0.53          | 0.96           | 424        | 161                | 263                | 57                           | 100        | 0.99       | 0.87           | 2.42                  | 7.87            | 5.10            | 56.24        | 45.55                 | 53.07         | 50.81         | 50.68          |
| <a href="#">ODP</a>  | 30.80        | 1.28          | 4.34           | 2811       | 159                | 1764               | 70                           | 53         | 1.63       | 0.86           | 4.44                  | 4.37            | 78.14           | 31.52        | 16.50                 | 29.62         | 28.29         | 25.45          |
| <a href="#">WEN</a>  | 54.98        | -0.36         | -0.65          | 2472       | 154                | 1609               | 37                           | 93         | 0.65       | 1.07           | -0.76                 | 11.45           | 43.44           | 55.95        | 36.73                 | 52.21         | 49.17         | 45.99          |
| <a href="#">WM</a>   | 44.54        | 1.49          | 3.46           | 7070       | 154                | 4603               | 70                           | 52         | 1.75       | 1.07           | 0.81                  | 4.55            | 6.05            | 45.06        | 36.64                 | 42.47         | 40.62         | 40.86          |
| <a href="#">CMI</a>  | 88.41        | 1.72          | 1.98           | 1087       | 154                | 706                | 73                           | 2          | 2.19       | 1.55           | 0.11                  | -0.60           | 5.60            | 93.88        | 63.56                 | 88.59         | 86.09         | 79.31          |

|                      |        |        |         |       |             |            | All S&P500 stocks |     |      |         | Above the line |          |          |        | Below the line |        |        |         |
|----------------------|--------|--------|---------|-------|-------------|------------|-------------------|-----|------|---------|----------------|----------|----------|--------|----------------|--------|--------|---------|
| Symbol               | Close  | Pt Chg | Pct Chg | Vol   | Pct 30D Vol | Avg 30DVol | CR1               | CR2 | Rng  | 10D Rng | 5D% Chg        | 20D% Chg | 52W %Chg | H 52W  | L 52W          | EMA 20 | EMA 50 | EMA 200 |
| <a href="#">JBL</a>  | 37.04  | 2.50   | 7.24    | 4827  | 409         | 1182       | 91                | 24  | 3.80 | 0.98    | 5.62           | 13.52    | 47.39    | 37.40  | 21.80          | 34.35  | 32.09  | 30.06   |
| <a href="#">FDX</a>  | 103.70 | 5.21   | 5.29    | 4399  | 289         | 1525       | 90                | 0   | 3.40 | 1.63    | 3.86           | 5.55     | 4.09     | 104.03 | 76.81          | 98.66  | 94.88  | 88.49   |
| <a href="#">NOVL</a> | 9.10   | 0.28   | 3.17    | 12719 | 219         | 5813       | 69                | 90  | 0.54 | 0.27    | 5.32           | 14.18    | 31.12    | 9.27   | 4.94           | 8.38   | 7.89   | 6.65    |
| <a href="#">UNH</a>  | 63.79  | 0.73   | 1.16    | 11294 | 219         | 5149       | 34                | 63  | 1.08 | 1.34    | 1.25           | 5.14     | 49.25    | 64.50  | 42.50          | 62.10  | 59.59  | 52.80   |
| <a href="#">LNC</a>  | 53.73  | 2.23   | 4.33    | 2174  | 200         | 1090       | 90                | 30  | 1.65 | 0.74    | 2.42           | 3.35     | 16.12    | 54.41  | 41.59          | 52.08  | 50.65  | 48.07   |
| <a href="#">CC</a>   | 22.90  | 0.35   | 1.55    | 5990  | 193         | 3102       | 78                | 41  | 0.41 | 0.70    | 5.87           | 11.54    | 49.19    | 23.02  | 13.40          | 21.52  | 19.53  | 17.38   |
| <a href="#">CTXS</a> | 28.24  | 0.86   | 3.14    | 2504  | 167         | 1497       | 90                | 48  | 0.88 | 0.61    | 4.25           | 1.33     | 11.44    | 28.68  | 20.70          | 27.34  | 27.00  | 24.26   |
| <a href="#">SEE</a>  | 55.81  | 0.53   | 0.96    | 424   | 161         | 263        | 57                | 100 | 0.99 | 0.87    | 2.42           | 7.87     | 5.10     | 56.24  | 45.55          | 53.07  | 50.81  | 50.68   |
| <a href="#">ODP</a>  | 30.80  | 1.28   | 4.34    | 2811  | 159         | 1764       | 70                | 53  | 1.63 | 0.86    | 4.44           | 4.37     | 78.14    | 31.52  | 16.50          | 29.62  | 28.29  | 25.45   |
| <a href="#">WEN</a>  | 54.98  | -0.36  | -0.65   | 2472  | 154         | 1609       | 37                | 93  | 0.65 | 1.07    | -0.76          | 11.45    | 43.44    | 55.95  | 36.73          | 52.21  | 49.17  | 45.99   |
| <a href="#">SWY</a>  | 24.61  | -0.20  | -0.81   | 2933  | 153         | 1919       | 14                | 46  | 0.42 | 0.63    | 2.20           | 5.26     | 26.27    | 26.46  | 17.85          | 24.02  | 23.55  | 22.81   |
| <a href="#">TSG</a>  | 23.63  | -0.25  | -1.05   | 1273  | 149         | 853        | 20                | 40  | 0.45 | 0.67    | -2.19          | 7.51     | 5.35     | 24.90  | 18.26          | 22.84  | 21.38  | 20.40   |
| <a href="#">TMO</a>  | 31.65  | -0.13  | -0.41   | 1162  | 148         | 783        | 57                | 65  | 0.42 | 0.40    | 2.69           | 4.49     | 2.49     | 31.87  | 23.94          | 30.99  | 30.45  | 28.23   |
| <a href="#">NTRS</a> | 53.39  | -0.21  | -0.39   | 1437  | 145         | 993        | 18                | 21  | 0.60 | 0.81    | -2.63          | 3.27     | 9.32     | 55.00  | 41.60          | 53.34  | 52.44  | 48.44   |
| <a href="#">MDP</a>  | 51.69  | 0.24   | 0.47    | 360   | 139         | 259        | 75                | 22  | 0.40 | 0.60    | -0.31          | 0.64     | -4.86    | 54.55  | 44.51          | 51.28  | 50.37  | 49.03   |
| <a href="#">I</a>    | 24.45  | -0.20  | -0.81   | 13425 | 135         | 9910       | 28                | 50  | 0.40 | 0.33    | -1.69          | 20.15    | 23.36    | 25.60  | 0.00           | 24.24  | 21.36  | 19.76   |
| <a href="#">UNM</a>  | 22.34  | 0.34   | 1.55    | 1810  | 134         | 1351       | 91                | 100 | 0.43 | 0.33    | 1.36           | -0.18    | 28.10    | 22.69  | 15.50          | 22.11  | 21.31  | 19.16   |
| <a href="#">SLM</a>  | 55.42  | 1.40   | 2.59    | 2681  | 130         | 2063       | 79                | 8   | 1.68 | 0.88    | 1.41           | 4.72     | 2.82     | 56.06  | 45.56          | 53.76  | 53.71  | 51.11   |
| <a href="#">AGN</a>  | 107.31 | 0.71   | 0.67    | 1890  | 128         | 1474       | 69                | 6   | 1.79 | 1.63    | -1.19          | 8.16     | 31.78    | 110.50 | 69.01          | 104.72 | 98.20  | 86.61   |
| <a href="#">BNI</a>  | 69.01  | 1.55   | 2.30    | 2166  | 127         | 1702       | 64                | 90  | 1.80 | 1.22    | 3.42           | 4.04     | 46.46    | 69.65  | 44.58          | 66.47  | 63.85  | 55.14   |
| <a href="#">CIT</a>  | 51.91  | 0.41   | 0.79    | 1824  | 127         | 1440       | 45                | 54  | 0.63 | 0.84    | 0.30           | 3.04     | 16.07    | 52.75  | 35.41          | 50.76  | 48.33  | 43.98   |
| <a href="#">EDS</a>  | 24.33  | 0.32   | 1.33    | 2854  | 127         | 2254       | 87                | 40  | 0.46 | 0.37    | 3.05           | 2.06     | 6.34     | 24.81  | 18.59          | 23.64  | 23.28  | 21.27   |
| <a href="#">MWD</a>  | 58.11  | 0.40   | 0.69    | 6149  | 124         | 4977       | 57                | 43  | 0.54 | 0.87    | 1.17           | 2.94     | 5.50     | 60.51  | 47.66          | 56.95  | 54.92  | 53.14   |
| <a href="#">CSX</a>  | 50.20  | 1.17   | 2.39    | 1386  | 122         | 1139       | 76                | 66  | 1.21 | 0.81    | 1.95           | 2.93     | 25.66    | 50.49  | 36.90          | 48.94  | 46.99  | 44.10   |
| <a href="#">IGT</a>  | 30.49  | 0.68   | 2.28    | 2732  | 121         | 2253       | 71                | 85  | 0.68 | 0.49    | 1.63           | 4.88     | -11.19   | 34.99  | 24.20          | 29.80  | 28.08  | 27.68   |
| <a href="#">KRB</a>  | 27.39  | 0.01   | 0.04    | 6535  | 121         | 5402       | 54                | 50  | 0.35 | 0.29    | 0.22           | 2.39     | -3.32    | 29.01  | 18.28          | 27.11  | 26.20  | 24.24   |
| <a href="#">LPX</a>  | 27.50  | 0.50   | 1.85    | 1174  | 120         | 981        | 87                | 68  | 0.52 | 0.40    | 3.00           | 0.95     | 5.08     | 28.73  | 22.06          | 27.14  | 26.19  | 25.40   |
| <a href="#">PLD</a>  | 46.25  | 0.78   | 1.72    | 1167  | 113         | 1036       | 78                | 54  | 0.56 | 0.68    | -1.00          | 3.21     | 7.79     | 47.00  | 36.50          | 45.75  | 43.56  | 41.80   |

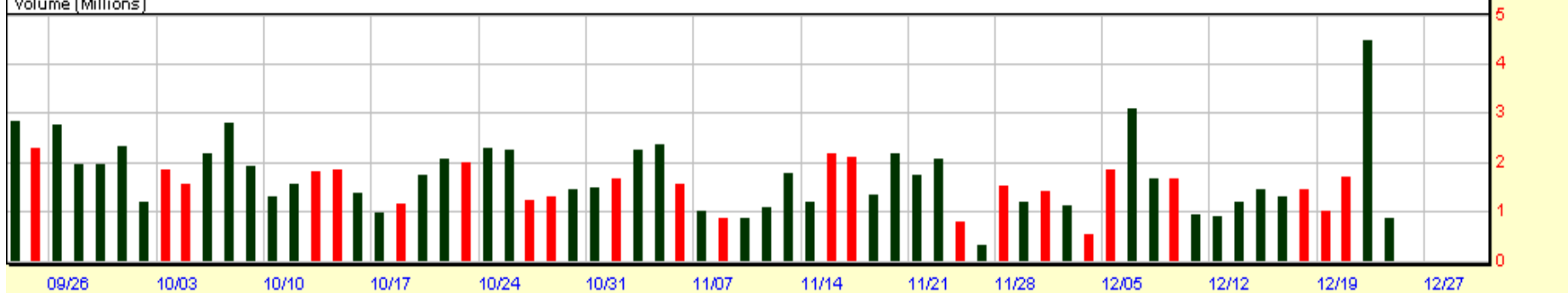
Fedex Corp 104.81 1.11 1.07%

Exp. Mov. Avg. (8) Last=101.13  
Exp. Mov. Avg. (20) Last=99.21  
Exp. Mov. Avg. (50) Last=95.56  
Exp. Mov. Avg. (89) Last=92.64  
Exp. Mov. Avg. (200) Last=89.77



© 1998-2004 Prophet Financial Systems, Inc. | Terms of use apply.

Volume (Millions)



United Parcel Svc 77.10 0.48 0.63%

Exp. Mov. Avg. (8) Last=76.21  
Exp. Mov. Avg. (20) Last=76.27  
Exp. Mov. Avg. (50) Last=75.12  
Exp. Mov. Avg. (89) Last=73.96  
Exp. Mov. Avg. (200) Last=73.16

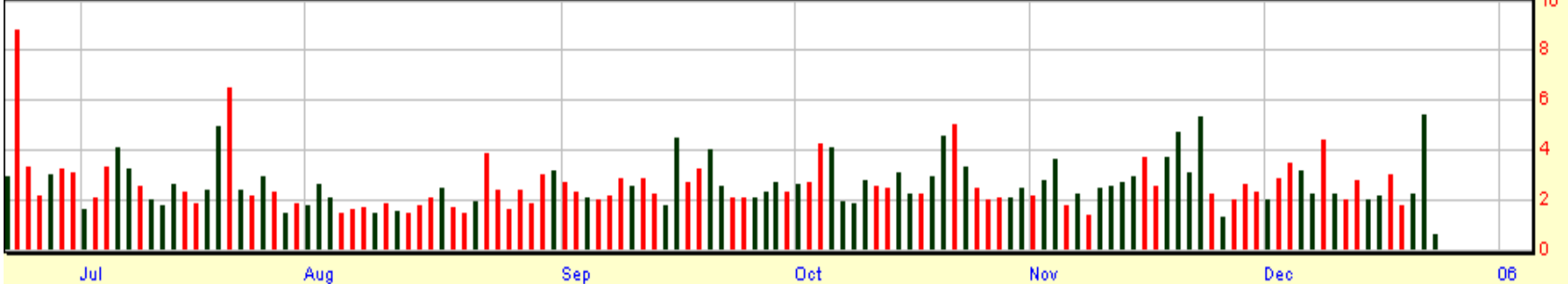
← UPS



80  
79  
78  
77.10  
76  
75  
74  
73  
72  
71  
70  
69  
68  
67  
66  
65

© 1998-2004 Prophet Financial Systems, Inc. | Terms of use apply.

Volume (Millions)

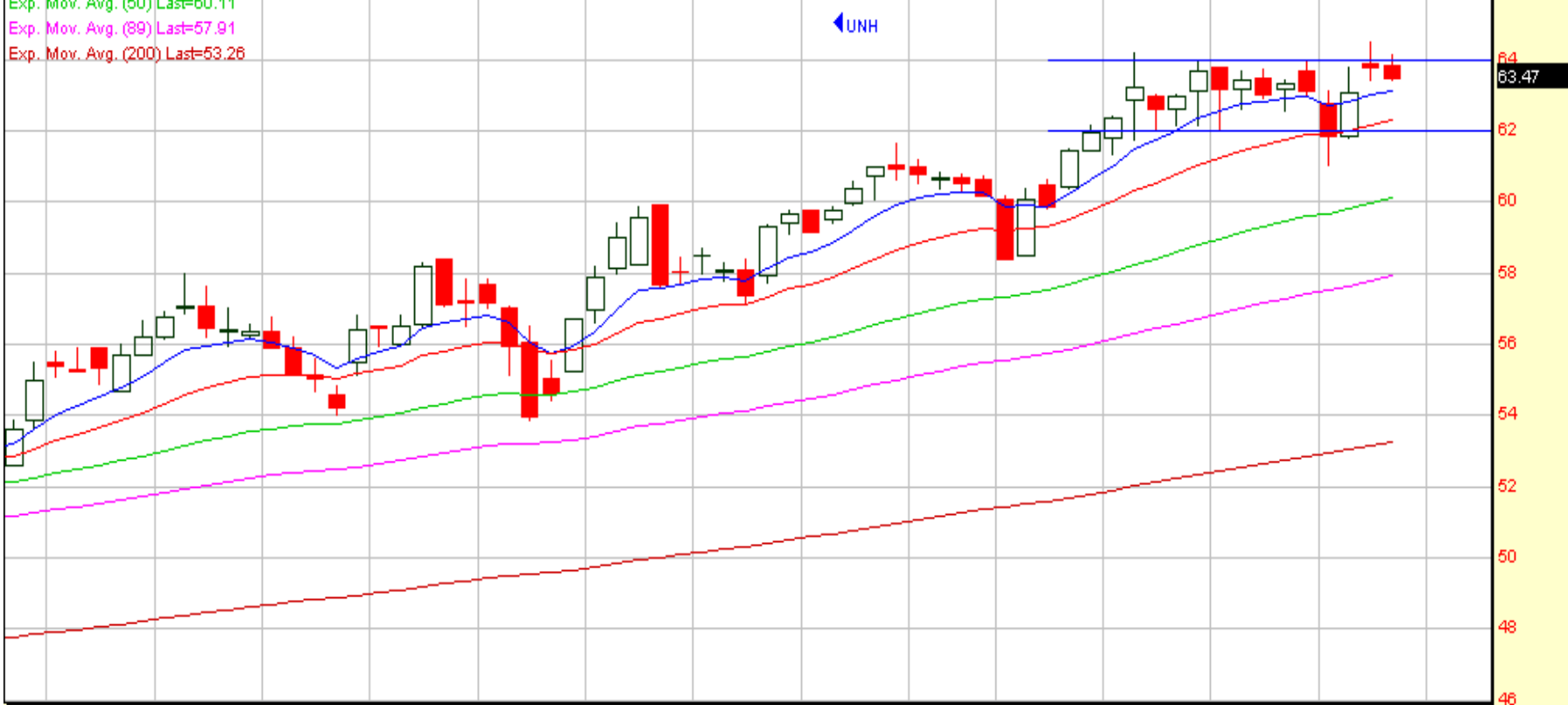


10  
8  
6  
4  
2  
0

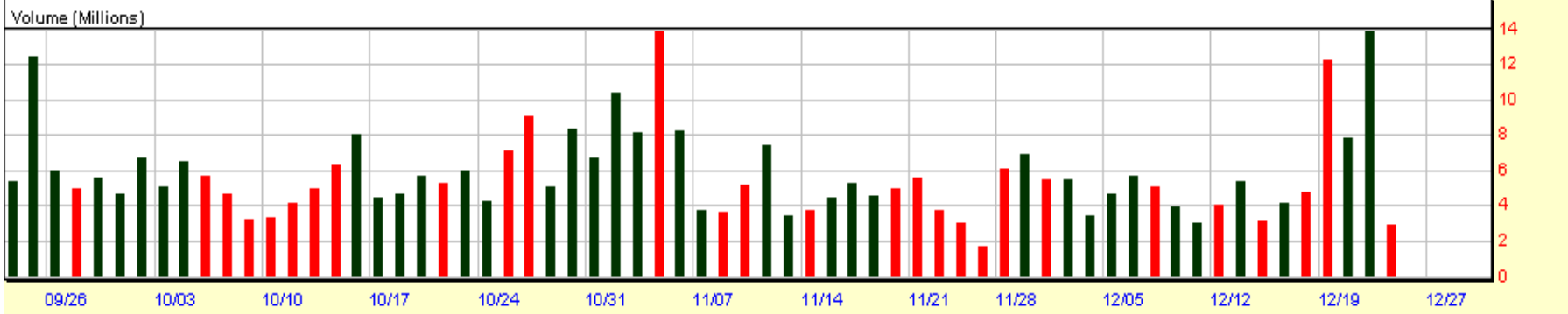
Jul Aug Sep Oct Nov Dec 06

Unitedhealth Group 63.47 -0.32 -0.50%

Exp. Mov. Avg. (8) Last=63.12  
Exp. Mov. Avg. (20) Last=62.30  
Exp. Mov. Avg. (50) Last=60.11  
Exp. Mov. Avg. (89) Last=57.91  
Exp. Mov. Avg. (200) Last=53.26



© 1998-2004 Prophet Financial Systems, Inc. | Terms of use apply.



Meredith Cp 51.50 -0.19 -0.37%

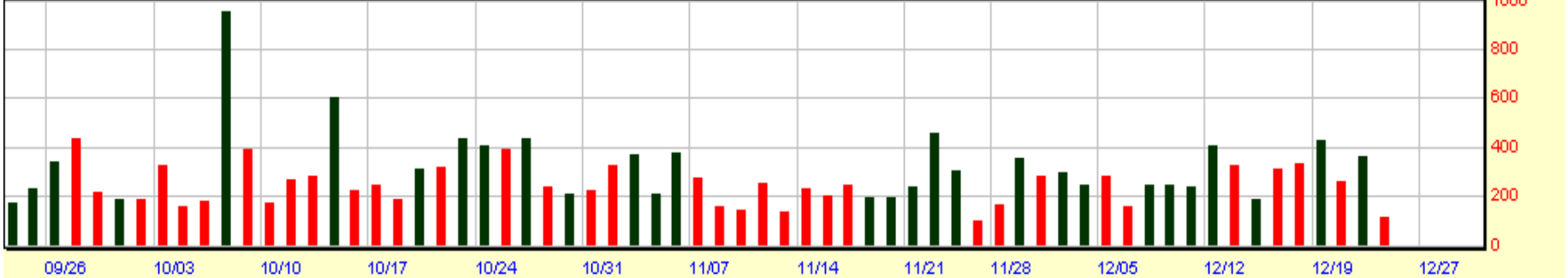
Exp. Mov. Avg. (8) Last=51.55  
Exp. Mov. Avg. (20) Last=51.26  
Exp. Mov. Avg. (50) Last=50.71  
Exp. Mov. Avg. (89) Last=50.23  
Exp. Mov. Avg. (200) Last=49.78

←MDP



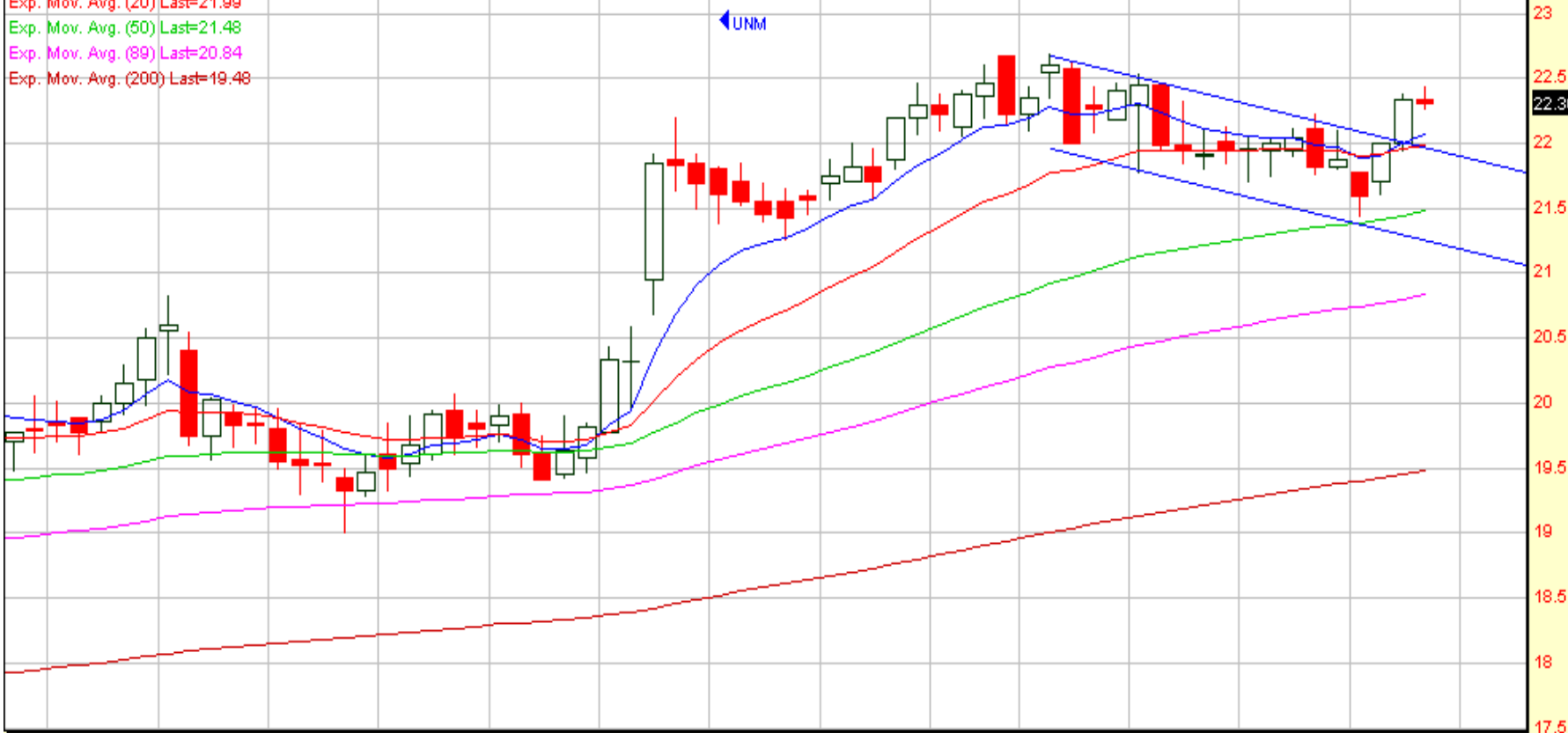
© 1998-2004 Prophet Financial Systems, Inc. | Terms of use apply.

Volume (Thousands)



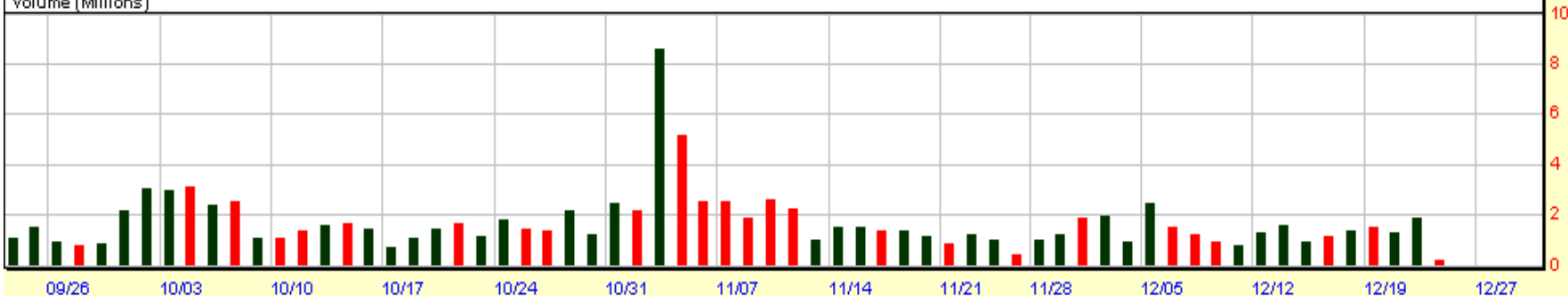
Unimprovident Cp 22.30 -0.04 -0.18%

Exp. Mov. Avg. (8) Last=22.07  
Exp. Mov. Avg. (20) Last=21.99  
Exp. Mov. Avg. (50) Last=21.48  
Exp. Mov. Avg. (89) Last=20.84  
Exp. Mov. Avg. (200) Last=19.48



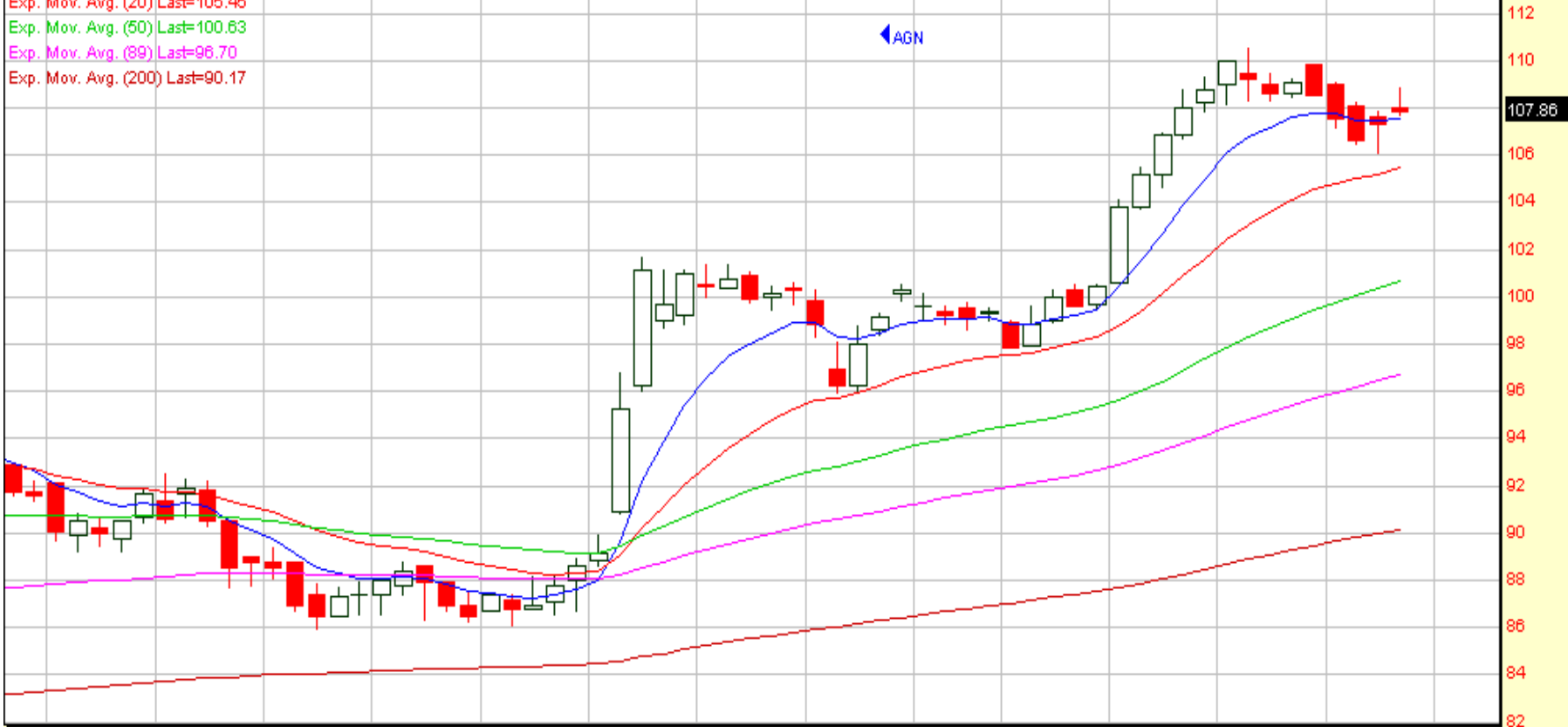
© 1998-2004 Prophet Financial Systems, Inc. | Terms of use apply.

Volume (Millions)



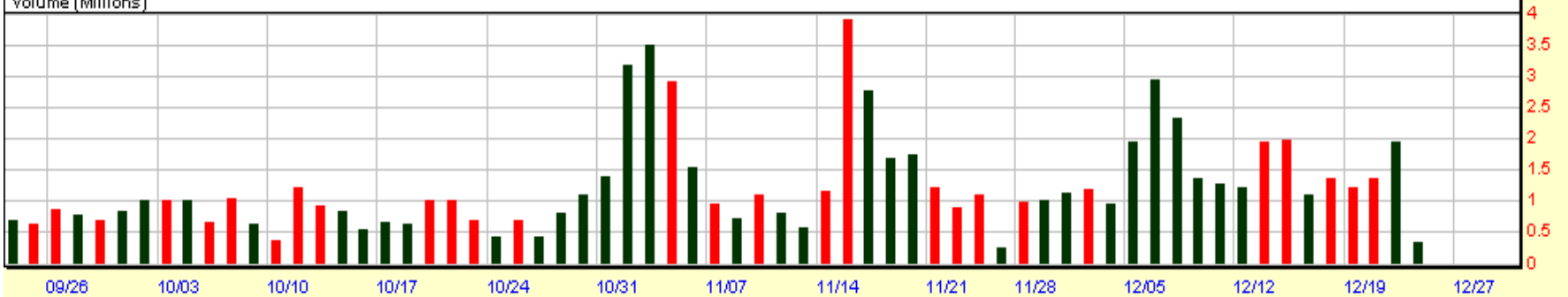
Allergan Inc 107.86 0.55 0.51%

Exp. Mov. Avg. (8) Last=107.54  
Exp. Mov. Avg. (20) Last=105.45  
Exp. Mov. Avg. (50) Last=100.63  
Exp. Mov. Avg. (89) Last=96.70  
Exp. Mov. Avg. (200) Last=90.17



© 1998-2004 Prophet Financial Systems, Inc. | Terms of use apply.

Volume (Millions)



Burlingtn N Sante Fe 69.21 0.20 0.29%

Exp. Mov. Avg. (8) Last=67.74

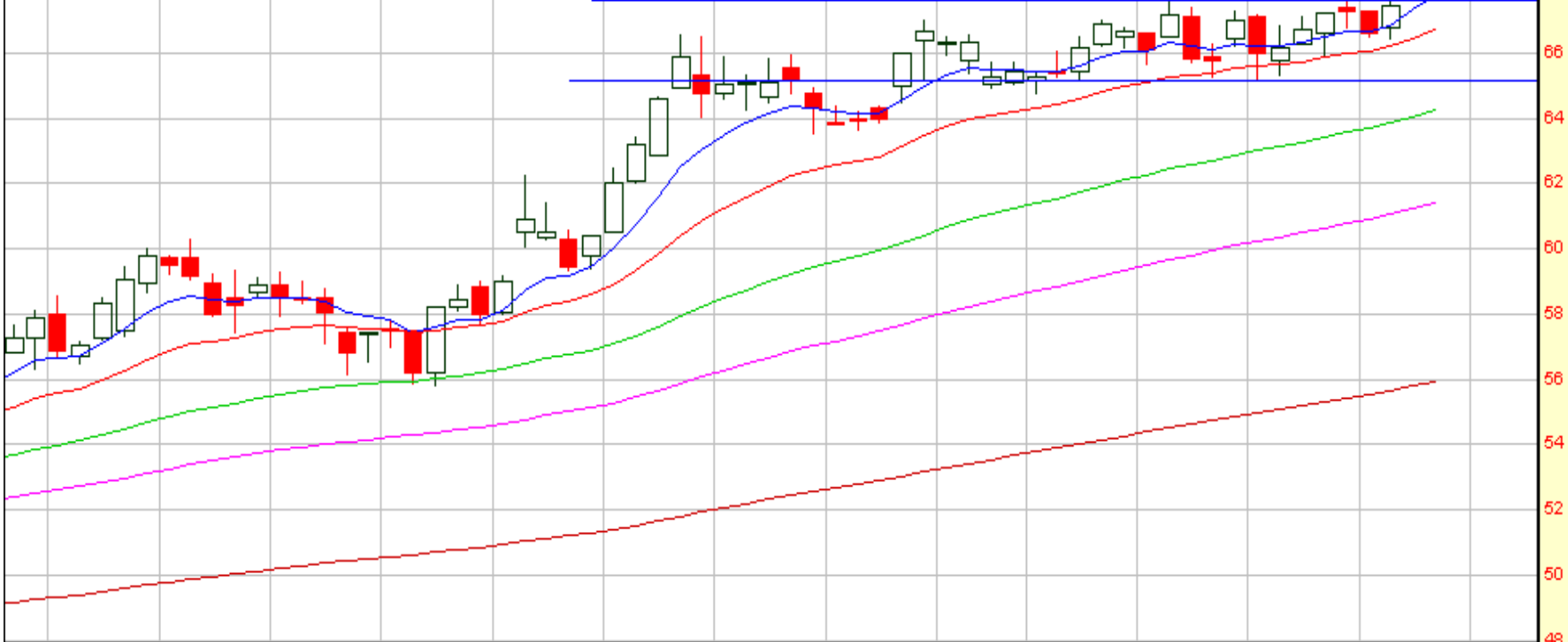
Exp. Mov. Avg. (20) Last=66.73

Exp. Mov. Avg. (50) Last=64.25

Exp. Mov. Avg. (89) Last=61.42

Exp. Mov. Avg. (200) Last=55.93

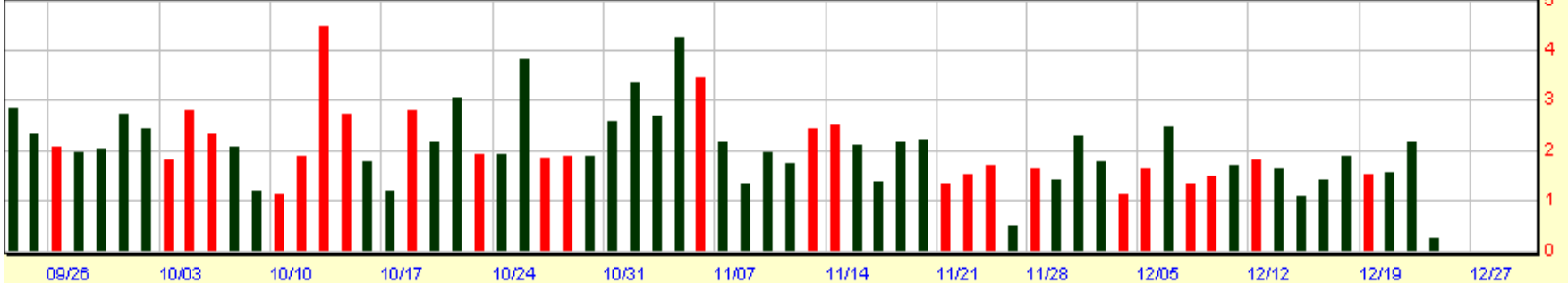
←BNI



70  
69.21  
68  
66  
64  
62  
60  
58  
56  
54  
52  
50  
48

© 1998-2004 Prophet Financial Systems, Inc. | Terms of use apply.

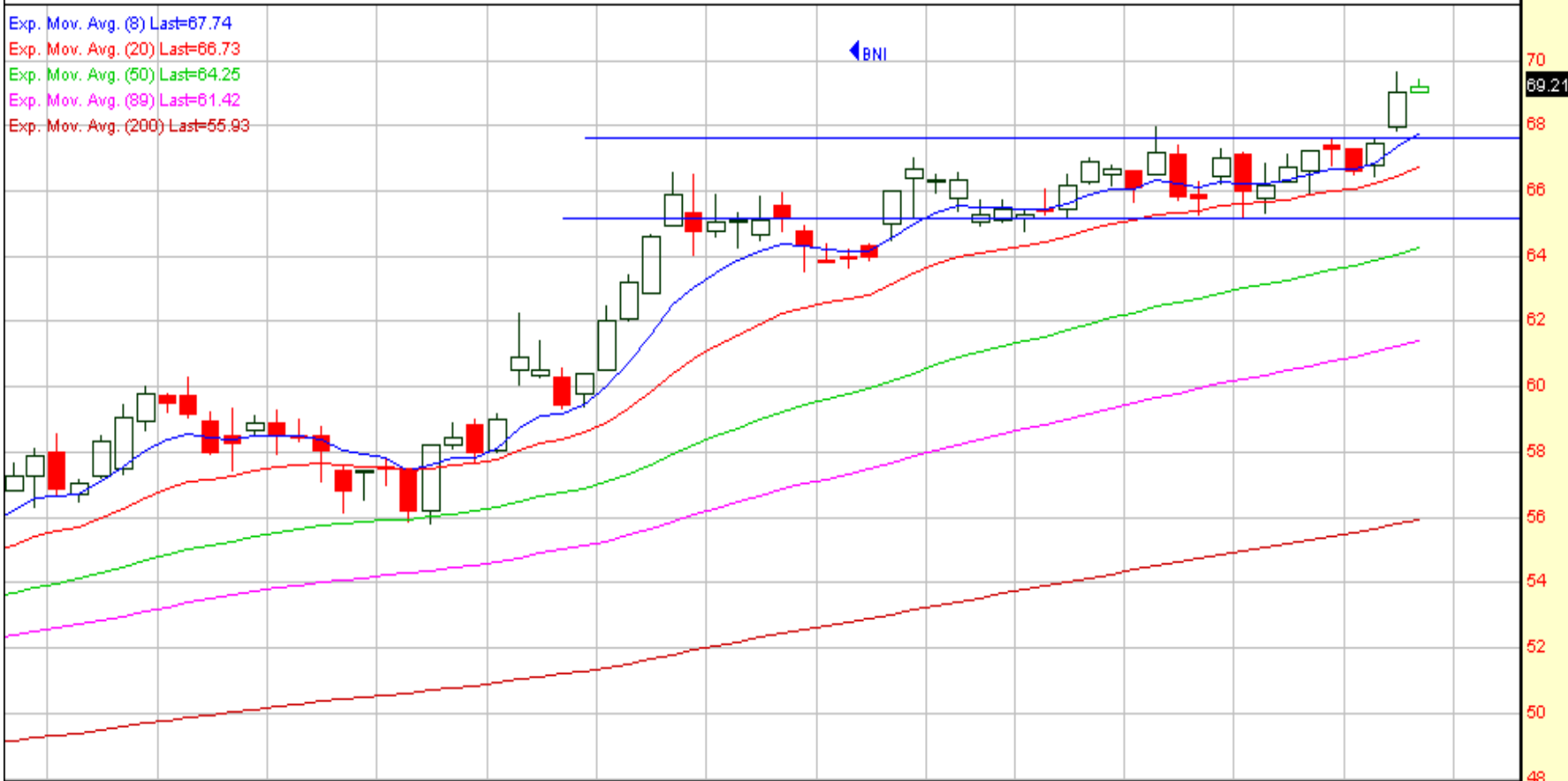
Volume (Millions)



5  
4  
3  
2  
1  
0

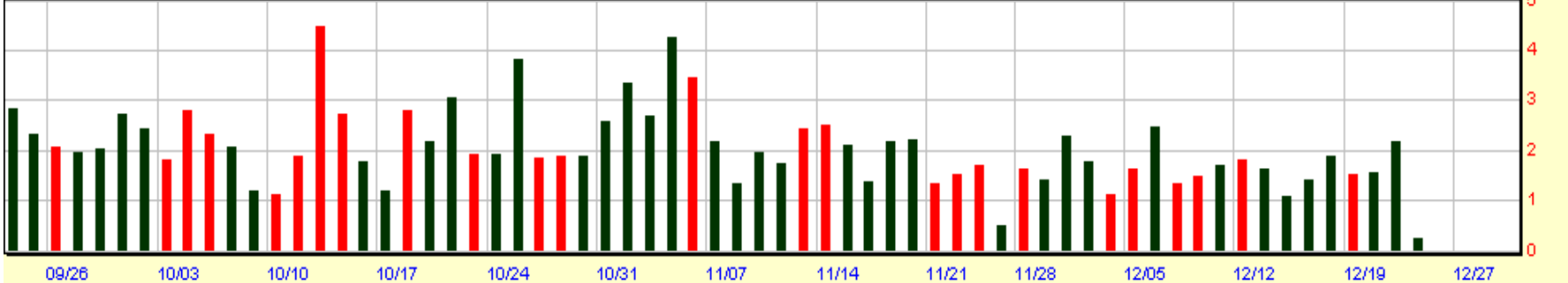
Burlingtn N Sante Fe 69.21 0.20 0.29%

Exp. Mov. Avg. (8) Last=67.74  
Exp. Mov. Avg. (20) Last=66.73  
Exp. Mov. Avg. (50) Last=64.25  
Exp. Mov. Avg. (89) Last=61.42  
Exp. Mov. Avg. (200) Last=55.93



© 1998-2004 Prophet Financial Systems, Inc. | Terms of use apply.

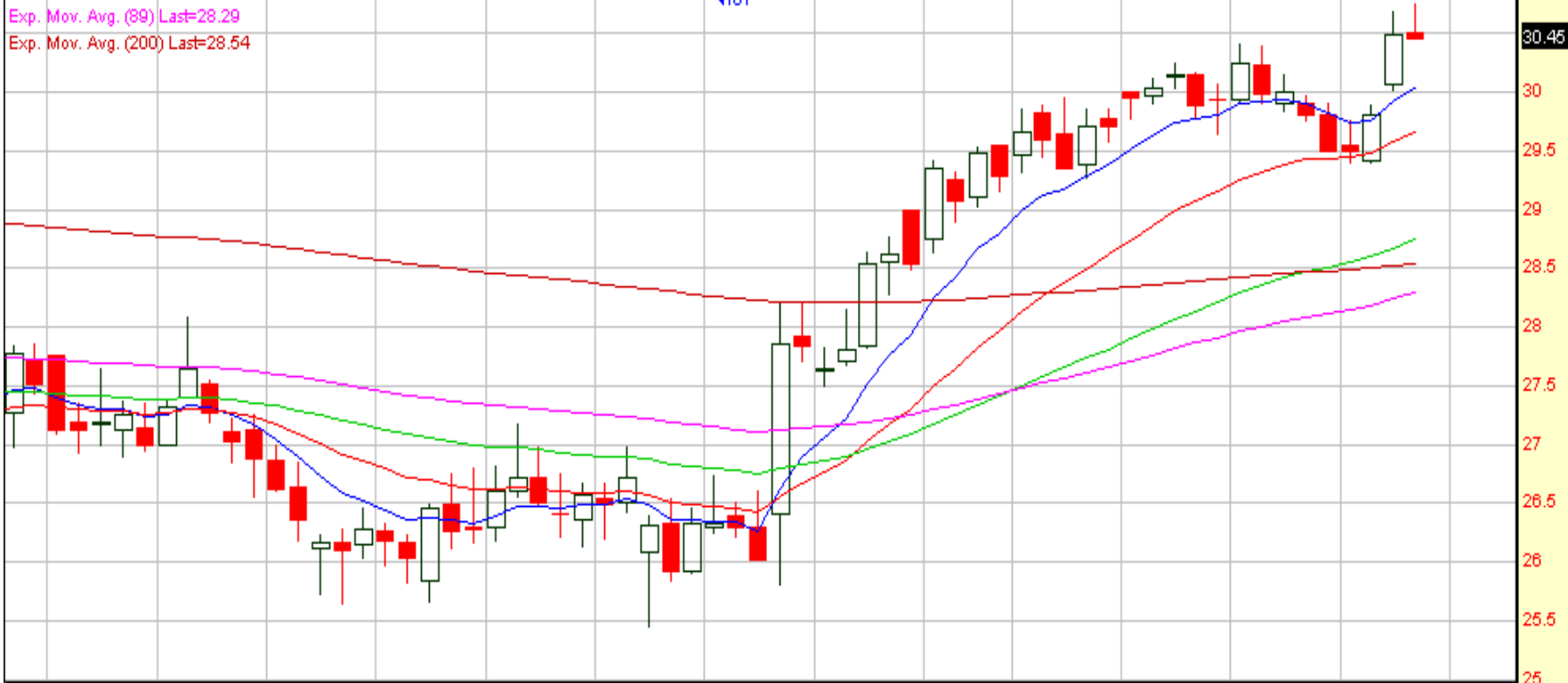
Volume (Millions)



Intl Game Tech 30.45 -0.04 -0.13%

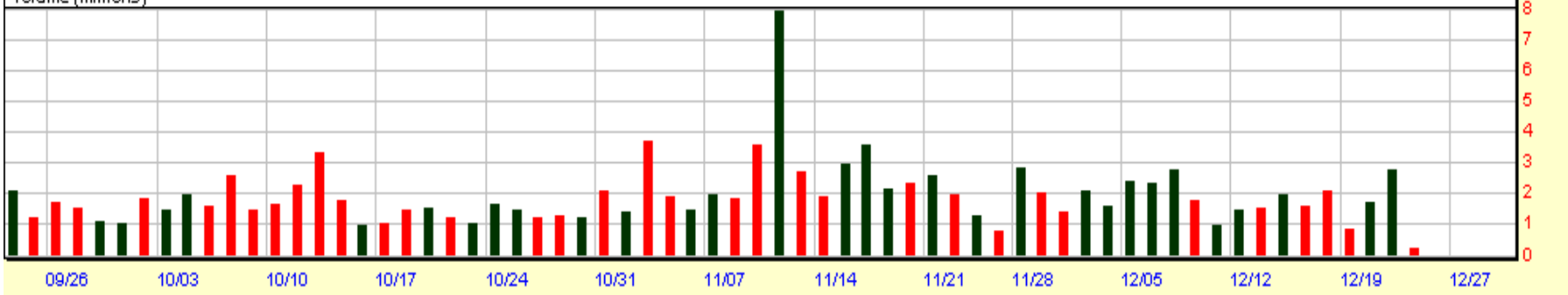
Exp. Mov. Avg. (8) Last=30.04  
Exp. Mov. Avg. (20) Last=29.66  
Exp. Mov. Avg. (50) Last=28.74  
Exp. Mov. Avg. (89) Last=28.29  
Exp. Mov. Avg. (200) Last=28.54

IGT



© 1998-2004 Prophet Financial Systems, Inc. | Terms of use apply.

Volume (Millions)



to help you identify good pattern setups. Sort by CR1, Pct Change, or % 30-DayAvgVol by Clicking on the Column Header. To learn more about how this screen is used, [click here](#).

[The column definitions can be found here.](#)

As of the close of December 21, 2005

| Symbol                | Close | Pt Chg | Pct Chg | Vol   | Pct 30D Vol | Avg 30DVol | All S&P500 stocks |     |      | Above the line |         |          |          | Below the line |       |        |        |         |
|-----------------------|-------|--------|---------|-------|-------------|------------|-------------------|-----|------|----------------|---------|----------|----------|----------------|-------|--------|--------|---------|
|                       |       |        |         |       |             |            | CR1               | CR2 | Rng  | 10D Rng        | 5D% Chg | 20D% Chg | 52W %Chg | H 52W          | L 52W | EMA 20 | EMA 50 | EMA 200 |
| <a href="#">GM</a>    | 19.05 | -0.80  | -4.03   | 51816 | 276         | 18760      | 4                 | 15  | 1.70 | 0.88           | -15.11  | -18.13   | -52.54   | 40.82          | 18.99 | 22.17  | 24.67  | 30.26   |
| <a href="#">DCN</a>   | 6.74  | 0.10   | 1.51    | 1937  | 140         | 1387       | 61                | 18  | 0.18 | 0.24           | -5.34   | -8.17    | -60.90   | 17.56          | 5.50  | 6.93   | 7.06   | 11.64   |
| <a href="#">HNZ</a>   | 34.03 | -0.25  | -0.73   | 1983  | 131         | 1519       | 81                | 12  | 0.48 | 0.37           | -2.16   | -4.62    | -11.50   | 39.13          | 33.64 | 34.78  | 35.38  | 36.12   |
| <a href="#">NYT</a>   | 26.98 | -0.27  | -0.99   | 1250  | 116         | 1076       | 21                | 12  | 0.28 | 0.43           | -2.28   | -2.95    | -34.02   | 40.96          | 26.50 | 27.40  | 27.74  | 31.28   |
| <a href="#">TRB</a>   | 30.21 | -0.11  | -0.36   | 1472  | 112         | 1310       | 36                | 14  | 0.36 | 0.44           | -2.96   | -5.89    | -28.05   | 42.37          | 30.08 | 31.19  | 31.81  | 35.77   |
| <a href="#">CMCSA</a> | 26.28 | -0.25  | -0.94   | 12635 | 108         | 11662      | 39                | 40  | 0.72 | 0.46           | -1.17   | -3.00    | -16.98   | 34.50          | 26.00 | 26.84  | 27.04  | 30.32   |
| <a href="#">DOW</a>   | 43.72 | 0.47   | 1.09    | 4496  | 99          | 4529       | 79                | 12  | 0.66 | 0.81           | -2.91   | -5.45    | -13.84   | 56.75          | 40.18 | 44.77  | 44.83  | 45.97   |
| <a href="#">RSH</a>   | 20.69 | -0.20  | -0.96   | 1322  | 97          | 1368       | 16                | 33  | 0.37 | 0.63           | -13.18  | -11.96   | -35.79   | 34.48          | 20.63 | 22.86  | 22.89  | 24.50   |
| <a href="#">LU</a>    | 2.79  | 0.03   | 1.09    | 31855 | 97          | 33002      | 50                | 0   | 0.06 | 0.06           | 1.45    | -3.79    | -26.19   | 3.86           | 2.35  | 2.82   | 2.86   | 2.89    |
| <a href="#">MXIM</a>  | 36.55 | -0.09  | -0.25   | 3648  | 93          | 3939       | 38                | 38  | 0.64 | 0.97           | -4.87   | 1.27     | -11.35   | 45.91          | 33.28 | 37.53  | 37.57  | 39.99   |
| <a href="#">F</a>     | 8.02  | -0.03  | -0.37   | 16825 | 91          | 18492      | 8                 | 0   | 0.25 | 0.19           | -1.72   | -3.84    | -45.92   | 14.97          | 7.57  | 8.20   | 8.25   | 9.77    |
| <a href="#">APCC</a>  | 21.92 | -0.38  | -1.70   | 1046  | 84          | 1248       | 16                | 46  | 0.69 | 0.55           | -2.62   | 3.01     | 5.69     | 28.56          | 19.00 | 22.24  | 22.27  | 24.53   |
| <a href="#">KO</a>    | 41.21 | -0.01  | -0.02   | 4856  | 78          | 6204       | 36                | 20  | 0.36 | 0.48           | 0.29    | -2.67    | -0.89    | 45.26          | 40.55 | 41.99  | 42.16  | 42.96   |
| <a href="#">LIZ</a>   | 35.02 | -0.05  | -0.14   | 511   | 76          | 672        | 40                | 80  | 0.48 | 0.51           | -1.77   | -1.32    | -14.29   | 43.82          | 33.70 | 35.36  | 35.94  | 38.82   |
| <a href="#">NI</a>    | 21.35 | -0.12  | -0.56   | 757   | 75          | 1015       | 19                | 16  | 0.37 | 0.36           | -1.29   | -1.97    | -4.73    | 25.50          | 21.15 | 21.55  | 22.08  | 23.31   |
| <a href="#">CD</a>    | 16.65 | -0.04  | -0.24   | 5916  | 73          | 8155       | 41                | 100 | 0.17 | 0.35           | -0.48   | -7.04    | -22.34   | 23.05          | 16.40 | 17.56  | 18.06  | 20.20   |
| <a href="#">THC</a>   | 8.02  | -0.02  | -0.25   | 2239  | 64          | 3485       | 28                | 0   | 0.25 | 0.27           | -5.54   | 9.71     | -24.91   | 13.06          | 7.27  | 8.14   | 8.28   | 11.03   |
| <a href="#">SYMC</a>  | 16.75 | -0.03  | -0.18   | 10858 | 59          | 18409      | 20                | 88  | 0.31 | 0.55           | -5.46   | -5.30    | -34.71   | 26.59          | 16.31 | 17.54  | 19.51  | 20.87   |
| <a href="#">JNJ</a>   | 60.88 | 0.10   | 0.16    | 6116  | 57          | 10792      | 36                | 21  | 0.50 | 0.59           | 1.28    | -1.18    | -3.82    | 69.99          | 59.76 | 60.95  | 61.83  | 64.77   |
| <a href="#">YUM</a>   | 47.99 | -0.04  | -0.08   | 963   | 50          | 1940       | 16                | 99  | 1.09 | 0.76           | -0.37   | -2.42    | 4.03     | 53.79          | 44.74 | 48.48  | 49.31  | 50.21   |
| <a href="#">XL</a>    | 65.89 | -0.25  | -0.38   | 894   | 32          | 2761       | 13                | 89  | 0.92 | 0.83           | -1.64   | -8.74    | -16.09   | 79.80          | 60.03 | 67.10  | 68.04  | 70.49   |

Gen Motors 19.07 0.02 0.10%

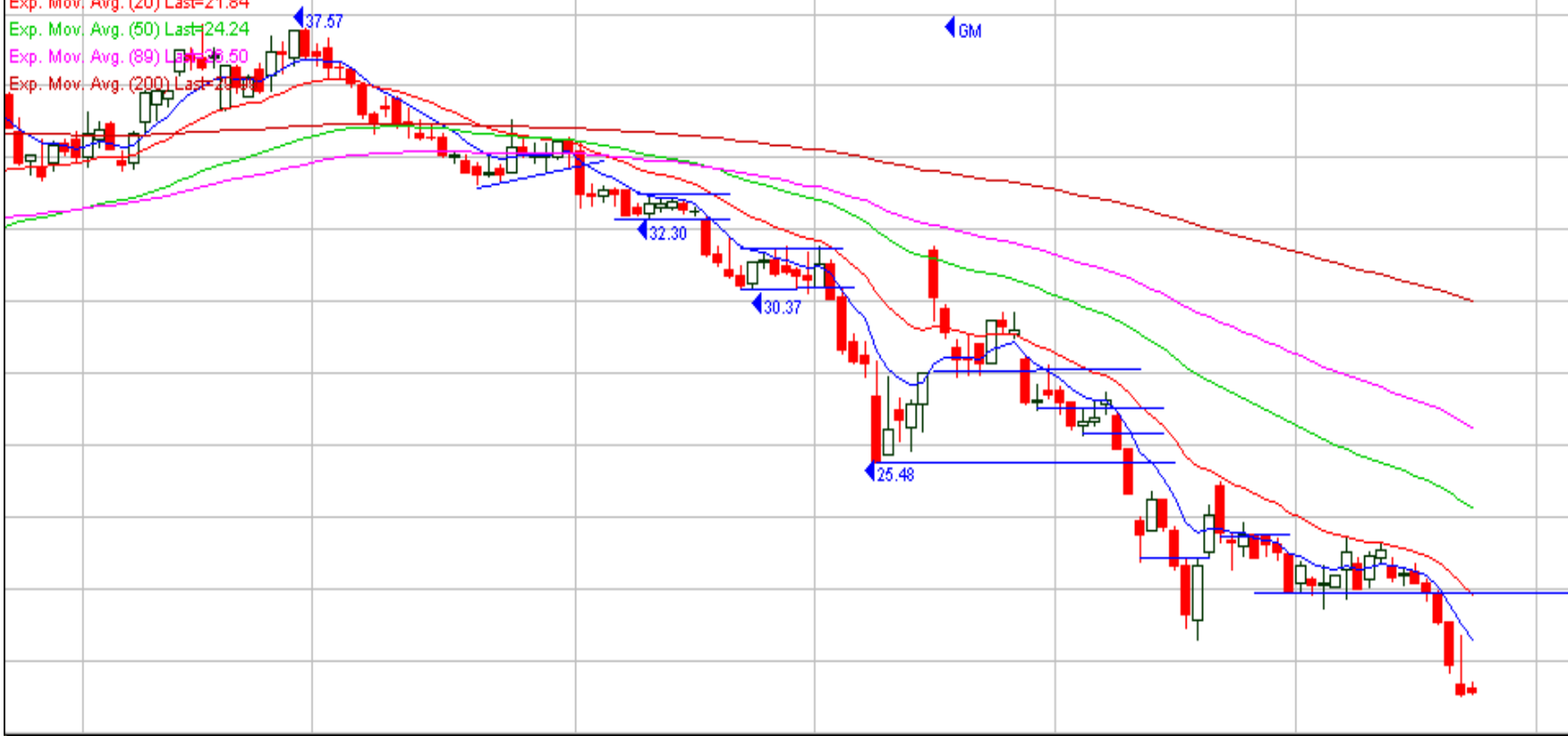
Exp. Mov. Avg. (8) Last=20.58

Exp. Mov. Avg. (20) Last=21.84

Exp. Mov. Avg. (50) Last=24.24

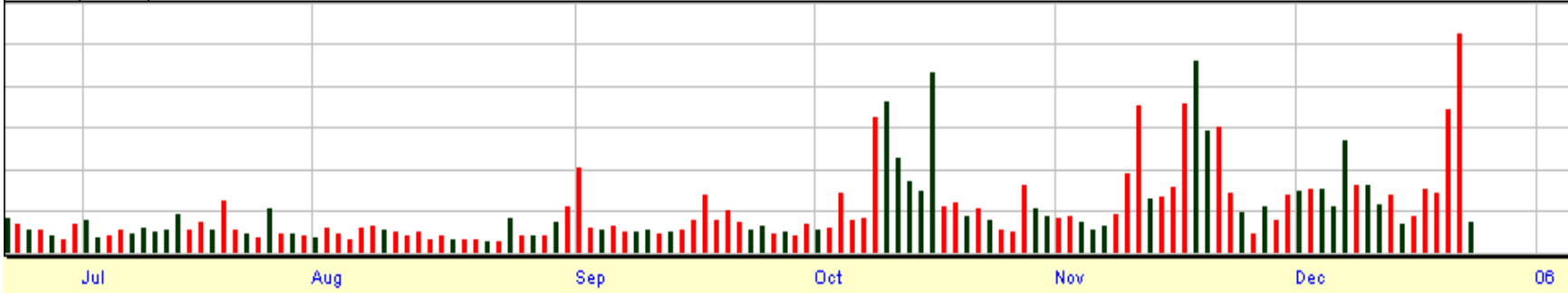
Exp. Mov. Avg. (89) Last=26.50

Exp. Mov. Avg. (200) Last=29.00



© 1998-2004 Prophet Financial Systems, Inc. | Terms of use apply.

Volume (Millions)



Dow Chemical 44.01 0.29 0.66%

Exp. Mov. Avg. (8) Last=44.03

Exp. Mov. Avg. (20) Last=44.50

Exp. Mov. Avg. (50) Last=44.64

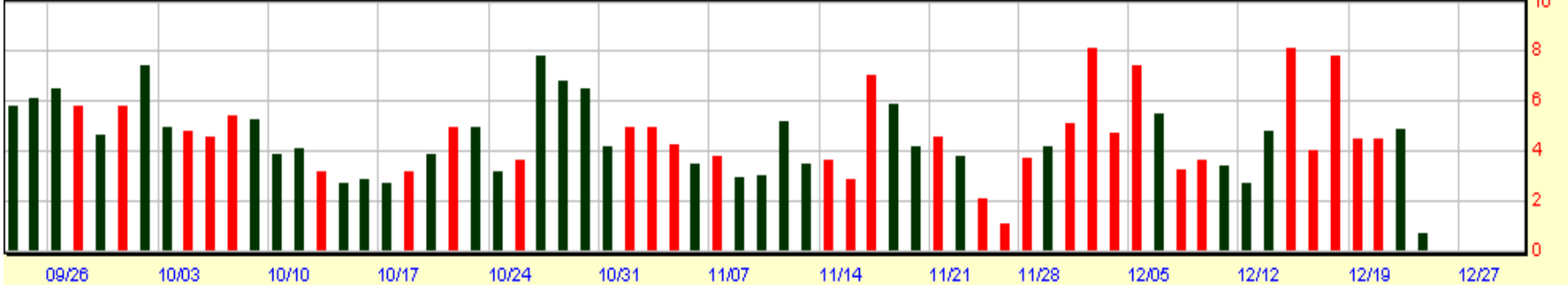
Exp. Mov. Avg. (89) Last=44.69

Exp. Mov. Avg. (200) Last=44.85



© 1998-2004 Prophet Financial Systems, Inc. | Terms of use apply.

Volume (Millions)



As of the close of December 21, 2005

|                       |              |               |                |            |                    |                    | <u>All Nasdaq100 stocks</u> |            |            |                |                | <u>Above the line</u> |                 |              | <u>Below the line</u> |               |               |                |
|-----------------------|--------------|---------------|----------------|------------|--------------------|--------------------|-----------------------------|------------|------------|----------------|----------------|-----------------------|-----------------|--------------|-----------------------|---------------|---------------|----------------|
| <u>Symbol</u>         | <u>Close</u> | <u>Pt Chg</u> | <u>Pct Chg</u> | <u>Vol</u> | <u>Pct 30D Vol</u> | <u>Avg 30D Vol</u> | <u>CR1</u>                  | <u>CR2</u> | <u>Rng</u> | <u>10D Rng</u> | <u>5D% Chg</u> | <u>20D% Chg</u>       | <u>52W %Chg</u> | <u>H 52W</u> | <u>L 52W</u>          | <u>EMA 20</u> | <u>EMA 50</u> | <u>EMA 200</u> |
| <a href="#">ERTS</a>  | 53.44        | 0.34          | 0.65           | 14473      | 391                | 3704               | 44                          | 56         | 2.34       | 1.43           | -0.41          | -10.75                | -13.37          | 71.16        | 47.44                 | 55.64         | 56.50         | 56.49          |
| <a href="#">MRVL</a>  | 55.41        | -3.53         | -5.99          | 12943      | 288                | 4490               | 12                          | 83         | 2.66       | 1.92           | -6.68          | -2.26                 | 60.17           | 60.97        | 31.06                 | 57.94         | 51.82         | 43.31          |
| <a href="#">CHKP</a>  | 21.16        | 0.91          | 4.47           | 4581       | 221                | 2069               | 87                          | 50         | 1.19       | 0.66           | 4.16           | -3.97                 | -13.09          | 25.41        | 19.56                 | 21.13         | 21.55         | 21.94          |
| <a href="#">ATYT</a>  | 16.47        | -0.03         | -0.19          | 10572      | 216                | 4898               | 43                          | 91         | 0.66       | 0.51           | -0.38          | 0.38                  | -14.73          | 19.81        | 10.47                 | 16.42         | 15.46         | 14.43          |
| <a href="#">BMET</a>  | 35.28        | -1.00         | -2.76          | 4198       | 215                | 1949               | 68                          | 18         | 0.59       | 0.77           | -6.69          | -3.17                 | -20.38          | 45.69        | 32.50                 | 36.96         | 35.91         | 36.85          |
| <a href="#">BBBY</a>  | 41.22        | 0.41          | 0.99           | 3468       | 206                | 1681               | 41                          | 54         | 1.28       | 1.08           | -2.23          | -4.21                 | 4.93            | 46.97        | 35.50                 | 42.40         | 41.16         | 40.65          |
| <a href="#">CTXS</a>  | 28.22        | 0.84          | 3.08           | 2504       | 167                | 1497               | 89                          | 50         | 0.88       | 0.61           | 4.27           | 1.35                  | 11.48           | 28.66        | 20.69                 | 27.33         | 26.98         | 24.24          |
| <a href="#">NTLI</a>  | 67.31        | 0.94          | 1.41           | 1759       | 143                | 1226               | 74                          | 17         | 1.34       | 1.91           | 1.75           | 13.19                 | -5.19           | 73.50        | 55.50                 | 63.17         | 61.42         | 64.05          |
| <a href="#">BEAS</a>  | 9.44         | 0.09          | 1.01           | 6430       | 138                | 4653               | 86                          | 16         | 0.22       | 0.26           | 1.68           | 2.38                  | 6.33            | 9.69         | 6.75                  | 9.14          | 9.00          | 8.58           |
| <a href="#">SSCC</a>  | 13.38        | 0.50          | 3.88           | 4268       | 132                | 3226               | 82                          | 15         | 0.69       | 0.40           | 3.39           | 10.89                 | -29.02          | 18.94        | 9.03                  | 12.69         | 11.34         | 11.93          |
| <a href="#">CELG</a>  | 58.72        | 1.69          | 2.96           | 2015       | 127                | 1588               | 69                          | 48         | 2.09       | 1.91           | -1.05          | -6.70                 | 123.42          | 63.25        | 24.69                 | 60.20         | 57.71         | 46.76          |
| <a href="#">PAYX</a>  | 41.88        | 0.72          | 1.75           | 2762       | 127                | 2181               | 74                          | 44         | 0.84       | 0.81           | -0.81          | -2.05                 | 21.82           | 43.34        | 28.78                 | 42.01         | 40.41         | 34.64          |
| <a href="#">SIAL</a>  | 63.69        | 0.19          | 0.29           | 467        | 125                | 375                | 44                          | 47         | 0.78       | 0.96           | -1.97          | -4.32                 | 3.87            | 67.09        | 55.31                 | 65.16         | 64.54         | 61.39          |
| <a href="#">CSCO</a>  | 17.19        | -0.09         | -0.54          | 76348      | 124                | 61714              | 14                          | 11         | 0.22       | 0.24           | -2.83          | -0.37                 | -11.00          | 20.25        | 16.81                 | 17.53         | 17.39         | 18.20          |
| <a href="#">IACI</a>  | 27.69        | 0.06          | 0.22           | 2651       | 121                | 2192               | 46                          | 44         | 0.41       | 0.49           | 0.80           | -3.70                 | -9.59           | 31.13        | 23.22                 | 27.83         | 27.07         | 26.37          |
| <a href="#">SANM</a>  | 4.19         | 0.00          | 0.00           | 10593      | 116                | 9164               | 28                          | 17         | 0.22       | 0.18           | -2.90          | 0.00                  | -47.66          | 8.66         | 3.44                  | 4.27          | 4.13          | 4.70           |
| <a href="#">VRSN</a>  | 22.25        | -0.22         | -0.97          | 4323       | 113                | 3814               | 36                          | 50         | 0.44       | 0.56           | -4.30          | -2.20                 | -33.27          | 34.56        | 19.00                 | 22.63         | 22.64         | 25.71          |
| <a href="#">CHRW</a>  | 37.03        | 1.06          | 2.96           | 1162       | 113                | 1026               | 74                          | 6          | 1.34       | 1.09           | 0.08           | -10.23                | 33.15           | 41.69        | 23.59                 | 38.89         | 36.77         | 30.62          |
| <a href="#">NTAP</a>  | 28.59        | 0.59          | 2.12           | 4874       | 110                | 4417               | 74                          | 19         | 0.72       | 0.70           | -4.09          | -0.55                 | -13.52          | 34.97        | 22.50                 | 29.27         | 27.94         | 27.02          |
| <a href="#">CMCSA</a> | 26.28        | -0.25         | -0.94          | 12635      | 108                | 11662              | 39                          | 40         | 0.72       | 0.46           | -1.17          | -3.00                 | -16.98          | 34.50        | 26.00                 | 26.84         | 27.04         | 30.32          |
| <a href="#">APOL</a>  | 62.25        | -0.03         | -0.05          | 2055       | 108                | 1904               | 0                           | 14         | 0.75       | 1.94           | -8.24          | -12.44                | -22.34          | 84.19        | 57.38                 | 68.54         | 66.48         | 72.08          |
| <a href="#">MSFT</a>  | 26.72        | -0.12         | -0.47          | 72207      | 107                | 67342              | 14                          | 85         | 0.22       | 0.28           | -1.27          | -4.26                 | -0.93           | 28.25        | 23.81                 | 27.45         | 26.66         | 25.82          |
| <a href="#">GENZ</a>  | 73.16        | 2.44          | 3.45           | 2075       | 105                | 1985               | 99                          | 55         | 2.34       | 1.67           | 1.92           | -4.21                 | 31.44           | 77.81        | 55.13                 | 73.28         | 73.06         | 66.81          |
| <a href="#">FISV</a>  | 43.75        | 0.22          | 0.50           | 1437       | 104                | 1377               | 65                          | 89         | 0.63       | 0.76           | 1.74           | -5.34                 | 8.28            | 46.88        | 36.31                 | 44.25         | 44.36         | 43.39          |



[The column definitions can be found here.](#)

As of the close of December 21, 2005

| Symbol                | Close  | Pt Chg | Pct Chg | Vol   | Pct 30D Vol | Avg 30D Vol | All Nasdaq100 stocks |     |      | Above the line |         |          | Below the line |        |       |        |        |         |
|-----------------------|--------|--------|---------|-------|-------------|-------------|----------------------|-----|------|----------------|---------|----------|----------------|--------|-------|--------|--------|---------|
|                       |        |        |         |       |             |             | CR1                  | CR2 | Rng  | 10D Rng        | 5D% Chg | 20D% Chg | 52W %Chg       | H 52W  | L 52W | EMA 20 | EMA 50 | EMA 200 |
| <a href="#">ATYT</a>  | 16.47  | -0.03  | -0.19   | 10572 | 216         | 4898        | 43                   | 91  | 0.66 | 0.51           | -0.38   | 0.38     | -14.73         | 19.81  | 10.47 | 16.42  | 15.46  | 14.43   |
| <a href="#">CTXS</a>  | 28.22  | 0.84   | 3.08    | 2504  | 167         | 1497        | 89                   | 50  | 0.88 | 0.61           | 4.27    | 1.35     | 11.48          | 28.66  | 20.69 | 27.33  | 26.98  | 24.24   |
| <a href="#">BEAS</a>  | 9.44   | 0.09   | 1.01    | 6430  | 138         | 4653        | 86                   | 16  | 0.22 | 0.26           | 1.68    | 2.38     | 6.33           | 9.69   | 6.75  | 9.14   | 9.00   | 8.58    |
| <a href="#">CTSH</a>  | 51.44  | 0.63   | 1.23    | 1347  | 98          | 1379        | 96                   | 81  | 0.81 | 0.98           | 4.44    | 5.18     | 30.53          | 51.47  | 35.56 | 49.45  | 47.05  | 46.27   |
| <a href="#">BIIB</a>  | 44.38  | 0.59   | 1.36    | 2726  | 91          | 3004        | 44                   | 43  | 1.78 | 1.19           | -0.84   | -0.84    | -32.38         | 70.00  | 33.16 | 44.00  | 42.30  | 39.11   |
| <a href="#">CHIR</a>  | 44.63  | -0.03  | -0.07   | 1215  | 91          | 1332        | 27                   | 31  | 0.34 | 0.22           | -0.07   | 0.64     | 38.78          | 45.06  | 31.63 | 44.49  | 44.08  | 39.09   |
| <a href="#">GILD</a>  | 54.06  | 2.47   | 4.79    | 4376  | 90          | 4846        | 99                   | 95  | 2.34 | 1.80           | 3.78    | -0.06    | 56.42          | 56.50  | 30.38 | 52.54  | 50.77  | 43.95   |
| <a href="#">TLAB</a>  | 10.63  | 0.16   | 1.50    | 5767  | 90          | 6399        | 44                   | 33  | 0.28 | 0.28           | -2.85   | 6.92     | 28.31          | 11.03  | 6.53  | 10.56  | 10.09  | 8.92    |
| <a href="#">COST</a>  | 49.78  | 0.56   | 1.14    | 2370  | 82          | 2885        | 77                   | 75  | 0.81 | 0.79           | 1.14    | 1.08     | 4.19           | 51.19  | 39.47 | 49.36  | 48.67  | 45.38   |
| <a href="#">CMVT</a>  | 27.16  | 0.28   | 1.05    | 1437  | 81          | 1784        | 61                   | 33  | 0.72 | 0.60           | -2.90   | -0.23    | 10.84          | 28.47  | 21.16 | 27.09  | 26.00  | 25.04   |
| <a href="#">TEVA</a>  | 44.44  | 0.66   | 1.50    | 3630  | 77          | 4723        | 67                   | 100 | 0.84 | 1.00           | -0.07   | 5.96     | 49.53          | 45.91  | 26.75 | 43.04  | 40.18  | 34.19   |
| <a href="#">SPLS</a>  | 23.19  | 0.06   | 0.27    | 3214  | 76          | 4253        | 25                   | 87  | 0.38 | 0.62           | 0.13    | -0.13    | 3.78           | 24.13  | 18.63 | 22.92  | 22.63  | 21.73   |
| <a href="#">AMZN</a>  | 48.97  | 0.84   | 1.75    | 6983  | 75          | 9358        | 95                   | 50  | 1.28 | 1.02           | -0.89   | 0.26     | 23.97          | 50.00  | 30.59 | 48.78  | 45.57  | 39.88   |
| <a href="#">ADBE</a>  | 37.44  | -0.62  | -1.64   | 5524  | 71          | 7784        | 8                    | 67  | 1.25 | 1.27           | 8.51    | 11.96    | 20.76          | 39.47  | 25.78 | 35.35  | 33.34  | 30.65   |
| <a href="#">SUNW</a>  | 4.25   | 0.03   | 0.76    | 31741 | 65          | 49211       | 20                   | 33  | 0.16 | 0.16           | -3.54   | 13.33    | -19.05         | 5.63   | 3.41  | 4.12   | 3.95   | 3.87    |
| <a href="#">WFMI</a>  | 152.06 | -0.31  | -0.21   | 690   | 55          | 1257        | 25                   | 14  | 3.19 | 2.62           | -0.73   | 5.35     | 57.43          | 156.44 | 88.25 | 151.00 | 144.51 | 124.82  |
| <a href="#">ESRX</a>  | 87.25  | -0.75  | -0.85   | 1162  | 54          | 2168        | 22                   | 64  | 1.41 | 1.89           | -1.93   | 5.40     | 133.06         | 90.78  | 36.53 | 86.62  | 77.91  | 57.38   |
| <a href="#">SNPS</a>  | 20.50  | 0.19   | 0.93    | 866   | 53          | 1648        | 53                   | 33  | 0.53 | 0.47           | -1.20   | 2.34     | 10.63          | 21.19  | 16.16 | 20.37  | 19.47  | 18.26   |
| <a href="#">LAMR</a>  | 47.00  | -0.34  | -0.72   | 381   | 51          | 741         | 5                    | 74  | 0.63 | 0.70           | -1.57   | 2.66     | 11.00          | 48.13  | 36.63 | 46.99  | 45.68  | 42.45   |
| <a href="#">ERICY</a> | 34.25  | 0.00   | 0.00    | 945   | 44          | 2158        | 50                   | 67  | 0.31 | 0.44           | -0.81   | 3.01     | 8.84           | 37.19  | 27.75 | 34.00  | 33.52  | 32.81   |

Biogen Idec Inc-(Nasdaq NM) 45.50 1.11 2.50%

Exp. Mov. Avg. (8) Last=44.64

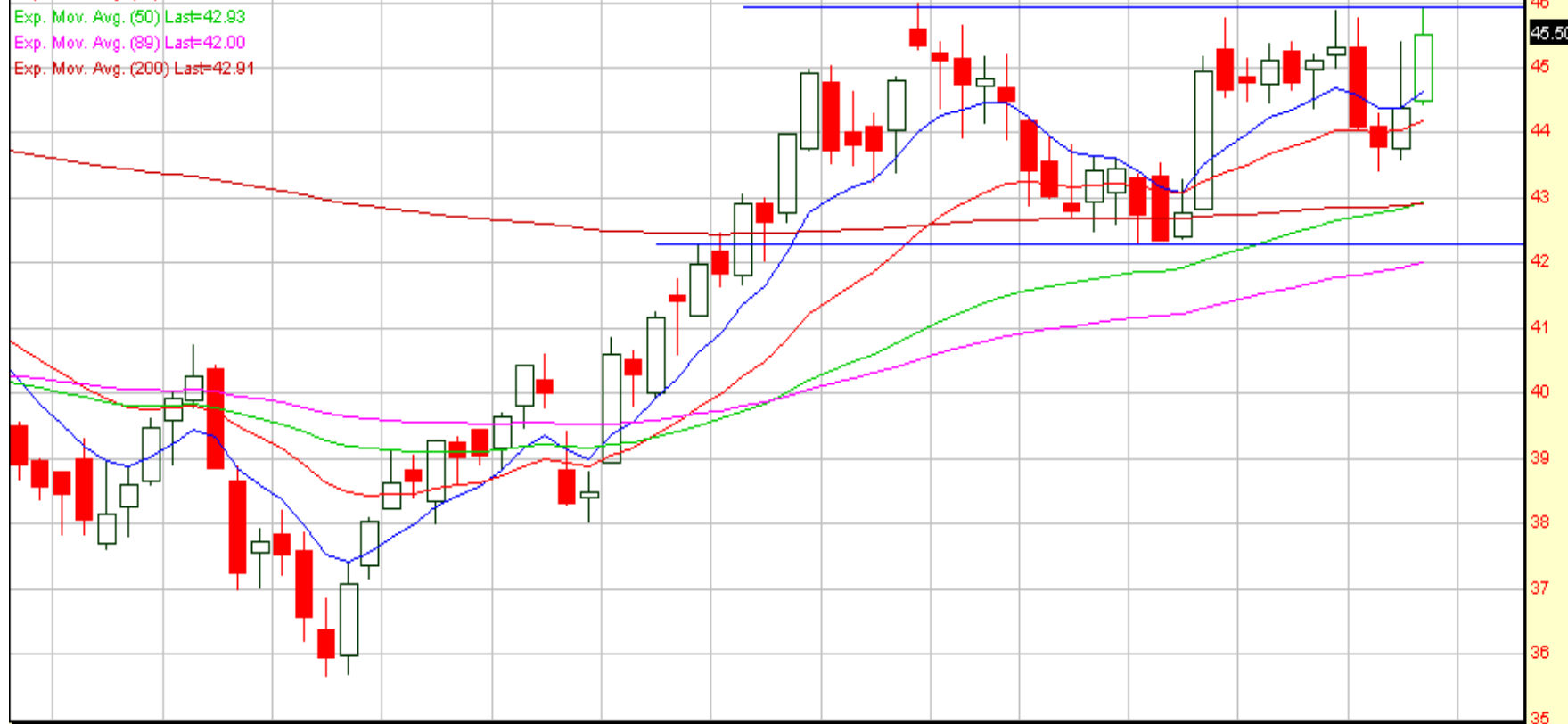
Exp. Mov. Avg. (20) Last=44.19

Exp. Mov. Avg. (50) Last=42.93

Exp. Mov. Avg. (89) Last=42.00

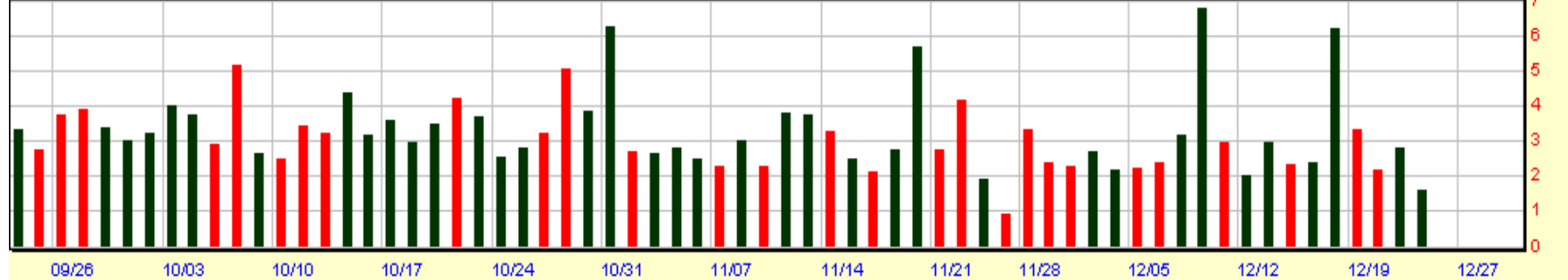
Exp. Mov. Avg. (200) Last=42.91

◀BIIB



© 1998-2004 Prophet Financial Systems, Inc. | Terms of use apply.

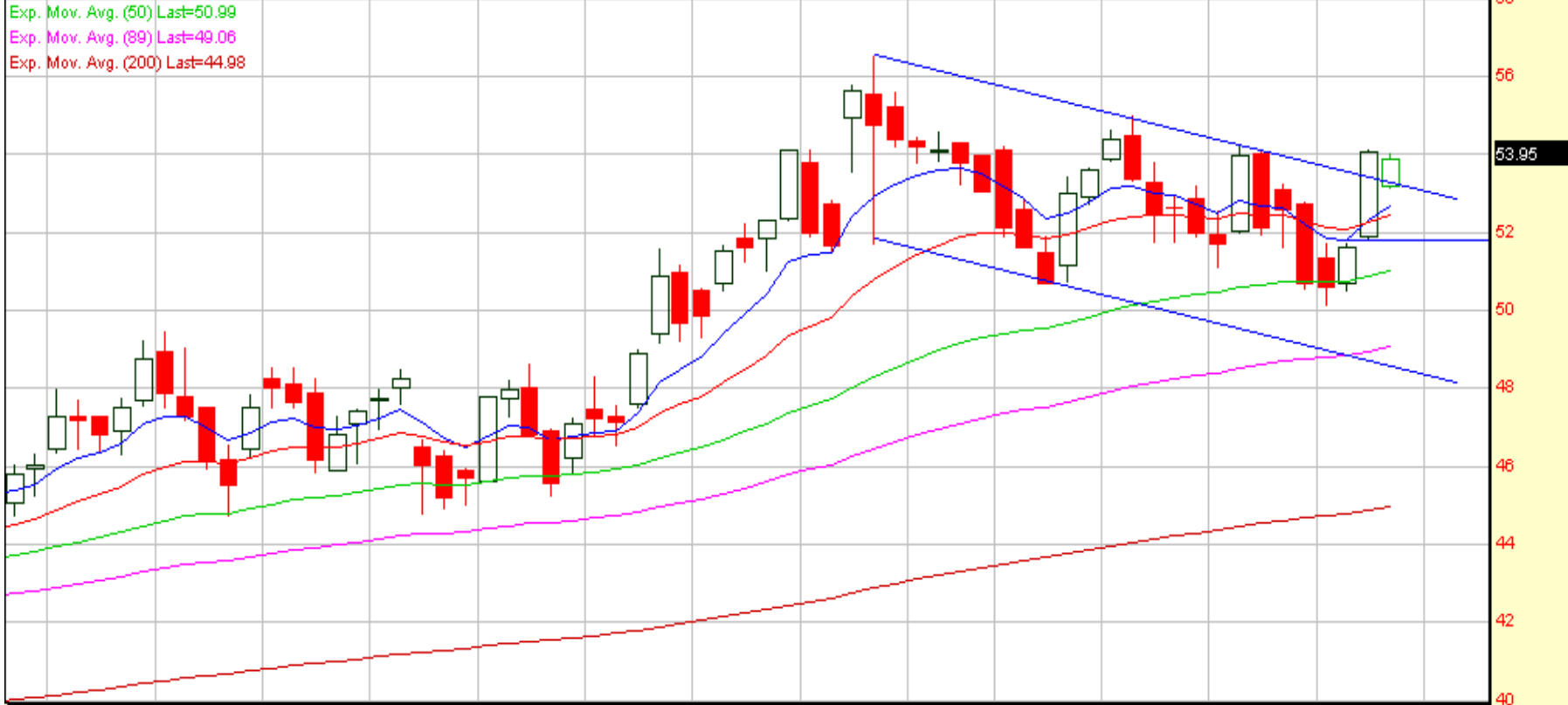
Volume (Millions)



Gilead Sciences Inc.-(Nasdaq NM) 53.95 -0.12 -0.22%

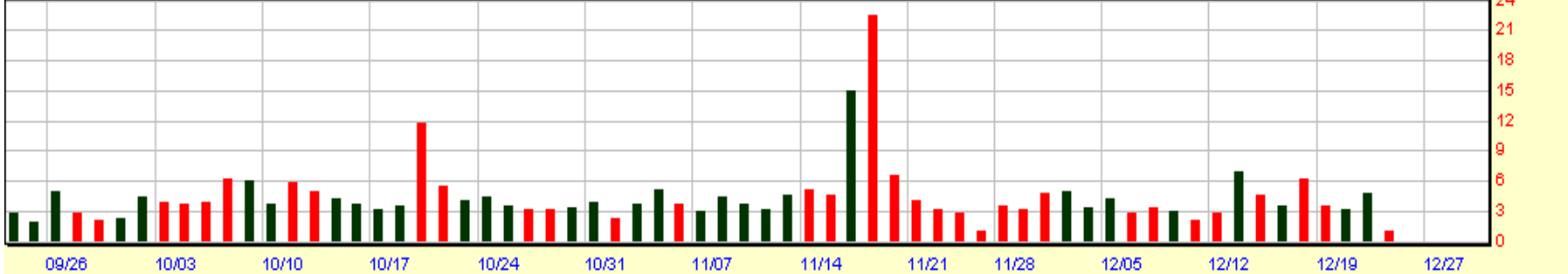
Exp. Mov. Avg. (8) Last=52.65  
Exp. Mov. Avg. (20) Last=52.42  
Exp. Mov. Avg. (50) Last=50.99  
Exp. Mov. Avg. (89) Last=49.06  
Exp. Mov. Avg. (200) Last=44.98

◀GILD



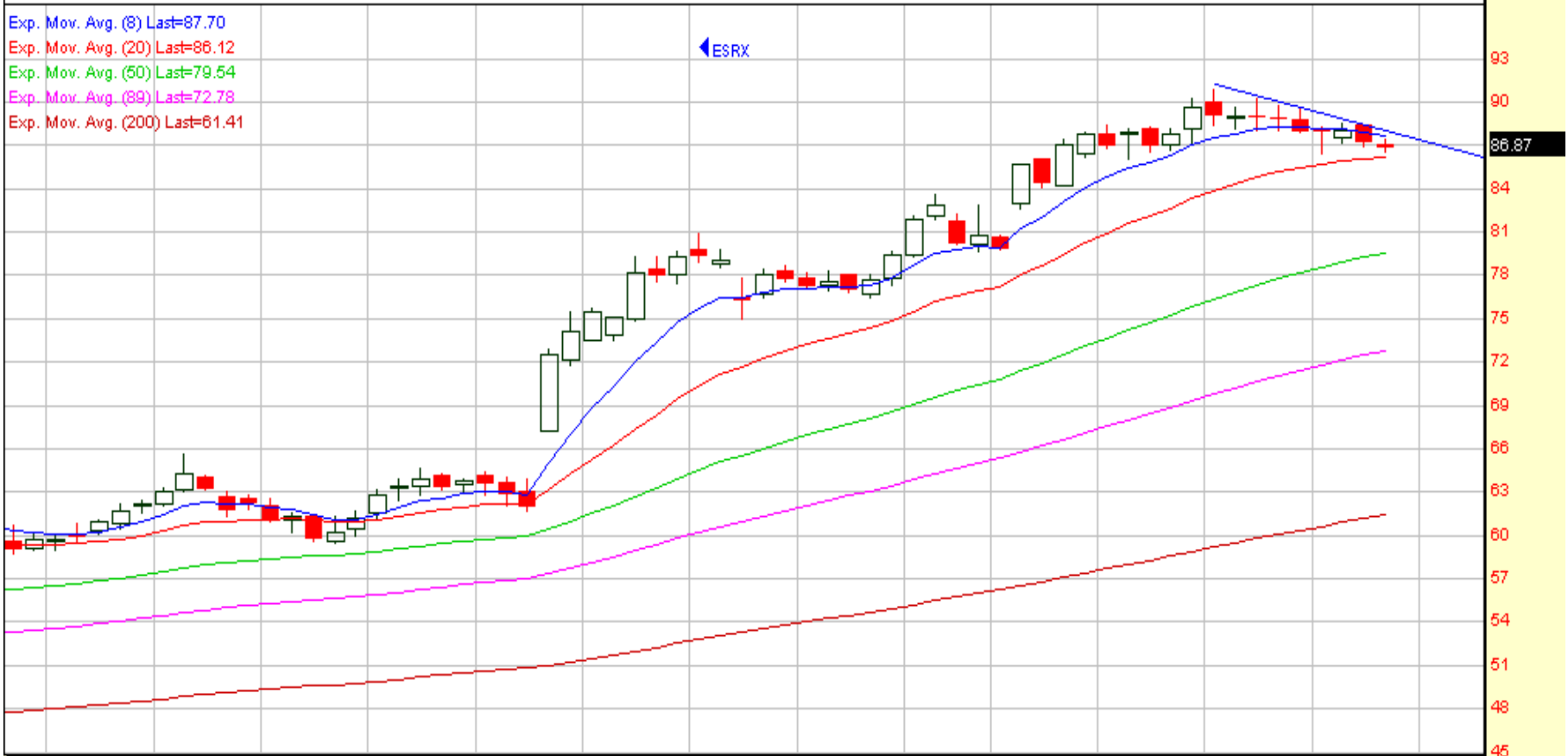
© 1998-2004 Prophet Financial Systems, Inc. | Terms of use apply.

Volume (Millions)



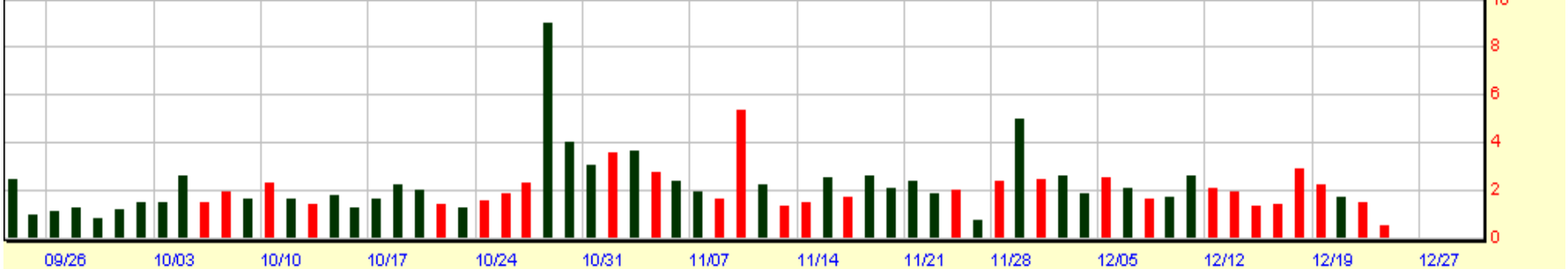
Express Scripts Inc. (Nasdaq NM) 86.87 -0.38 -0.44%

Exp. Mov. Avg. (8) Last=87.70  
Exp. Mov. Avg. (20) Last=86.12  
Exp. Mov. Avg. (50) Last=79.54  
Exp. Mov. Avg. (89) Last=72.78  
Exp. Mov. Avg. (200) Last=61.41



© 1998-2004 Prophet Financial Systems, Inc. | Terms of use apply.

Volume (Millions)



## Nasdaq 100 Index Screen

The Nasdaq 100 Index screen enables you to select stocks that exhibited buying or selling pressure the previous day. It identifies stocks that have had a range and price expansion, increased volume, a closing price in the top or bottom of the range, and where it closed in relation to its 20-, 50- and 200-day EMAs. The screen also gives you the percentage change of the closing price for one, five and 20 days in addition to the 52-week change. This screen will give you the necessary data to help you identify good pattern setups. Sort by CR1, Pct Change and % 30-DayAvgVol by Clicking on the Column Header. [click here](#).

[The column definitions can be found here.](#)

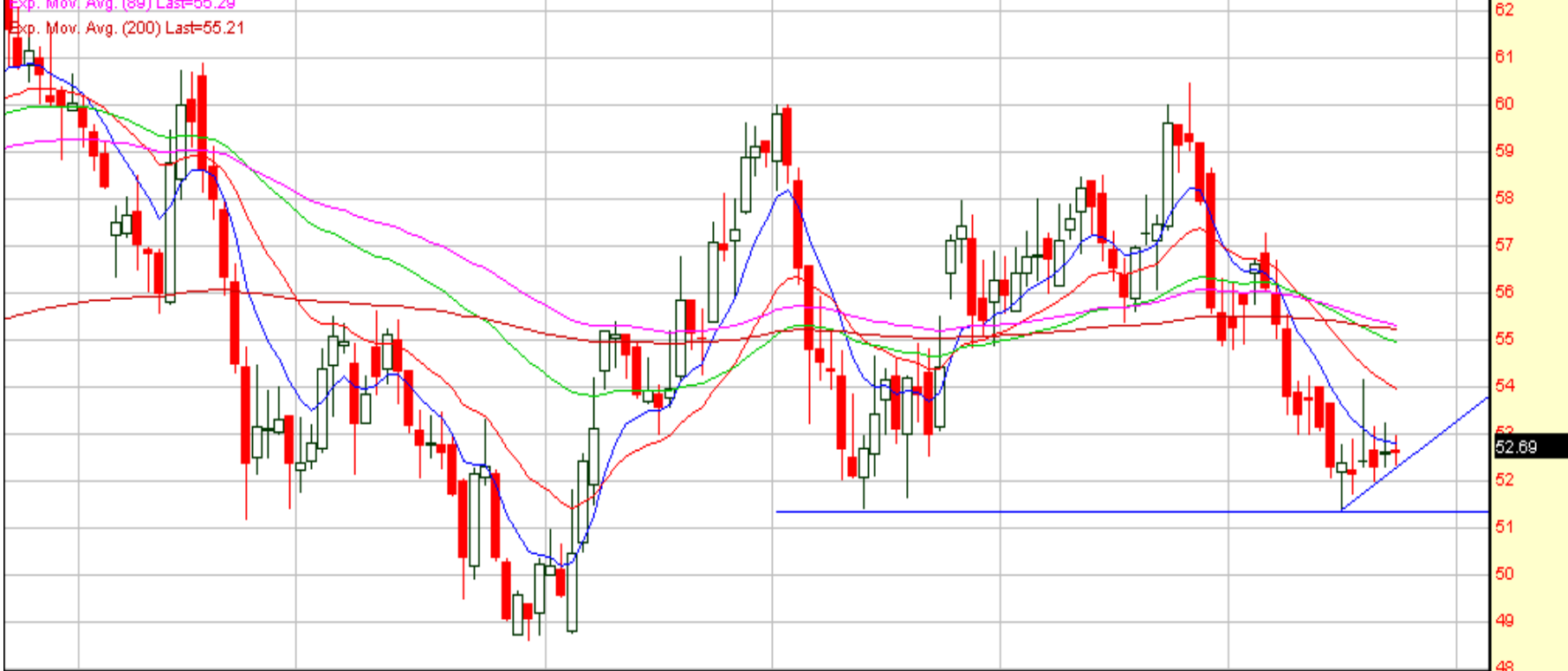
As of the close of December 21, 2005

|                        |                       |                        |                         |                     |                             |                            | <a href="#">All Nasdaq100 stocks</a> |                     |                     | <a href="#">Above the line</a> |                         |                          |                          | <a href="#">Below the line</a> |                       |                        |                        |                         |
|------------------------|-----------------------|------------------------|-------------------------|---------------------|-----------------------------|----------------------------|--------------------------------------|---------------------|---------------------|--------------------------------|-------------------------|--------------------------|--------------------------|--------------------------------|-----------------------|------------------------|------------------------|-------------------------|
| <a href="#">Symbol</a> | <a href="#">Close</a> | <a href="#">Pt Chg</a> | <a href="#">Pct Chg</a> | <a href="#">Vol</a> | <a href="#">Pct 30D Vol</a> | <a href="#">Avg 30DVol</a> | <a href="#">CR1</a>                  | <a href="#">CR2</a> | <a href="#">Rng</a> | <a href="#">10D Rng</a>        | <a href="#">5D% Chg</a> | <a href="#">20D% Chg</a> | <a href="#">52W %Chg</a> | <a href="#">H 52W</a>          | <a href="#">L 52W</a> | <a href="#">EMA 20</a> | <a href="#">EMA 50</a> | <a href="#">EMA 200</a> |
| <a href="#">VRSN</a>   | 22.25                 | -0.22                  | -0.97                   | 4323                | 113                         | 3814                       | 36                                   | 50                  | 0.44                | 0.56                           | -4.30                   | -2.20                    | -33.27                   | 34.56                          | 19.00                 | 22.63                  | 22.64                  | 25.71                   |
| <a href="#">CMCSA</a>  | 26.28                 | -0.25                  | -0.94                   | 12635               | 108                         | 11662                      | 39                                   | 40                  | 0.72                | 0.46                           | -1.17                   | -3.00                    | -16.98                   | 34.50                          | 26.00                 | 26.84                  | 27.04                  | 30.32                   |
| <a href="#">SEPR</a>   | 52.56                 | 0.28                   | 0.54                    | 1577                | 99                          | 1597                       | 33                                   | 26                  | 0.94                | 1.33                           | 0.54                    | -11.75                   | -10.91                   | 66.53                          | 48.56                 | 54.69                  | 55.40                  | 56.71                   |
| <a href="#">MXIM</a>   | 36.53                 | -0.09                  | -0.26                   | 3648                | 93                          | 3939                       | 38                                   | 37                  | 0.66                | 0.97                           | -4.88                   | 1.30                     | -11.37                   | 45.91                          | 33.25                 | 37.51                  | 37.56                  | 39.98                   |
| <a href="#">APCC</a>   | 21.91                 | -0.37                  | -1.68                   | 1046                | 84                          | 1248                       | 17                                   | 46                  | 0.72                | 0.55                           | -2.64                   | 3.09                     | 5.73                     | 28.53                          | 19.00                 | 22.23                  | 22.25                  | 24.51                   |
| <a href="#">DISH</a>   | 26.28                 | -0.41                  | -1.52                   | 1847                | 83                          | 2213                       | 4                                    | 18                  | 0.81                | 0.56                           | 0.36                    | -0.94                    | -21.26                   | 33.66                          | 24.44                 | 26.32                  | 26.52                  | 28.80                   |
| <a href="#">MCIP</a>   | 19.72                 | 0.03                   | 0.16                    | 1929                | 82                          | 2355                       | 50                                   | 60                  | 0.13                | 0.17                           | 0.00                    | -0.32                    | -0.79                    | 27.72                          | 17.84                 | 19.80                  | 19.91                  | 24.05                   |
| <a href="#">JNPR</a>   | 22.13                 | 0.09                   | 0.43                    | 5170                | 77                          | 6727                       | 70                                   | 89                  | 0.31                | 0.57                           | 1.72                    | -6.10                    | -18.15                   | 27.63                          | 19.63                 | 22.65                  | 22.95                  | 23.43                   |
| <a href="#">RIMM</a>   | 61.75                 | -0.31                  | -0.50                   | 4654                | 67                          | 6921                       | 41                                   | 7                   | 1.53                | 2.43                           | -5.18                   | -7.92                    | -26.02                   | 85.44                          | 51.00                 | 63.71                  | 63.72                  | 70.89                   |
| <a href="#">LBTYA</a>  | 22.09                 | -0.50                  | -2.21                   | 764                 | 64                          | 1188                       | 0                                    | 75                  | 0.63                | 0.55                           | -2.21                   | -9.82                    | -51.97                   | 52.31                          | 21.81                 | 22.85                  | 24.10                  | 37.57                   |
| <a href="#">SYMC</a>   | 16.75                 | -0.03                  | -0.18                   | 10858               | 59                          | 18409                      | 20                                   | 88                  | 0.31                | 0.55                           | -5.46                   | -5.30                    | -34.71                   | 26.59                          | 16.31                 | 17.54                  | 19.51                  | 20.87                   |
| <a href="#">XMSR</a>   | 28.41                 | -0.09                  | -0.33                   | 2477                | 57                          | 4324                       | 37                                   | 50                  | 0.84                | 1.08                           | -5.31                   | -8.37                    | -29.32                   | 40.63                          | 26.16                 | 29.37                  | 29.65                  | 31.78                   |

Sepracor Inc.-(Nasdaq NM) 52.69 0.10 0.19%

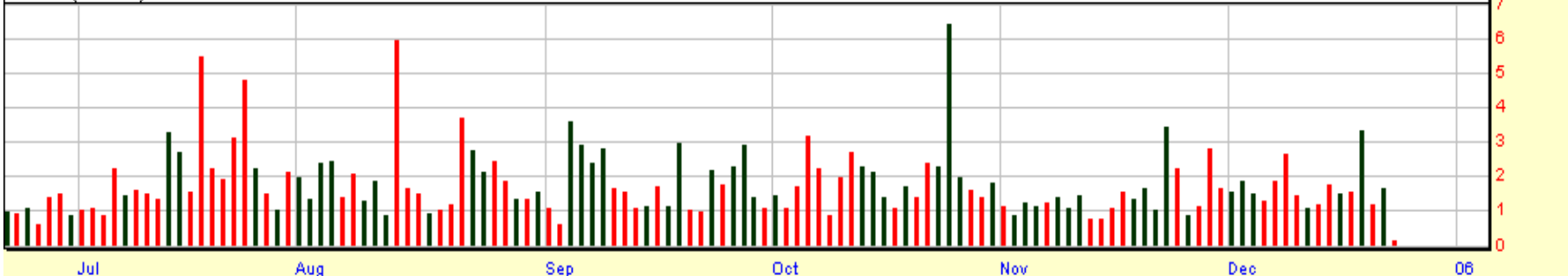
Exp. Mov. Avg. (8) Last=52.78  
Exp. Mov. Avg. (20) Last=53.95  
Exp. Mov. Avg. (50) Last=54.94  
Exp. Mov. Avg. (89) Last=55.29  
Exp. Mov. Avg. (200) Last=55.21

SEPR



© 1998-2004 Prophet Financial Systems, Inc. | Terms of use apply.

Volume (Millions)



## Change in Direction Screen

This screen identifies stocks in the S&P 500 and the NDX 100 that have made at least a five-day low and yesterday had a higher high, higher low and closed above the high of the low day. The list is sorted by the Percentage of the 30-Day Average Volume. To learn more about how this screen is used, [click here](#).

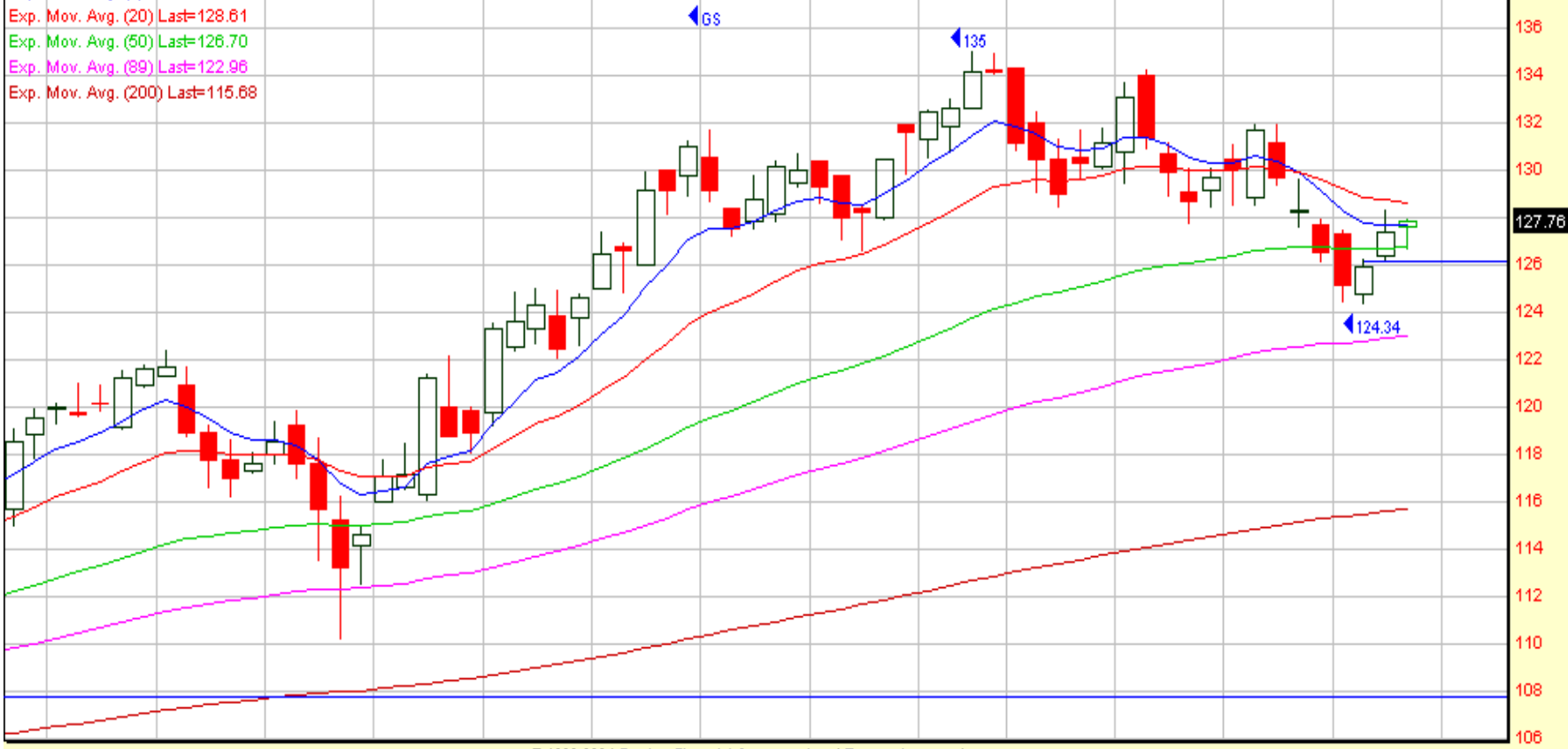
[The column definitions can be found here.](#)

As of the close of December 21, 2005

| Symbol               | Close  | Pt Chg | Pct Chg | Vol  | Pct 30D Vol | Avg 30D Vol | CR1 | CR2 | Rng  | 10D Rng | 5D% Chg | 20D% Chg | 52W %Chg | H 52W  | L 52W | EMA 20 | EMA 50 | EMA 200 |
|----------------------|--------|--------|---------|------|-------------|-------------|-----|-----|------|---------|---------|----------|----------|--------|-------|--------|--------|---------|
| <a href="#">FDX</a>  | 103.70 | 5.21   | 5.29    | 4399 | 289         | 1525        | 90  | 0   | 3.40 | 1.63    | 3.86    | 5.55     | 4.09     | 104.03 | 76.81 | 98.66  | 94.88  | 88.49   |
| <a href="#">ACV</a>  | 45.71  | 0.88   | 1.96    | 781  | 235         | 333         | 12  | 9   | 0.48 | 0.69    | -0.74   | 3.53     | -5.30    | 56.31  | 41.70 | 44.40  | 43.65  | 44.37   |
| <a href="#">LNC</a>  | 53.73  | 2.23   | 4.33    | 2174 | 200         | 1090        | 90  | 30  | 1.65 | 0.74    | 2.42    | 3.35     | 16.12    | 54.41  | 41.59 | 52.08  | 50.65  | 48.07   |
| <a href="#">UPS</a>  | 76.62  | 1.39   | 1.85    | 5395 | 192         | 2817        | 34  | 39  | 1.88 | 1.29    | 0.64    | -3.96    | -11.63   | 87.09  | 66.10 | 76.85  | 74.98  | 72.23   |
| <a href="#">ROH</a>  | 48.61  | 1.74   | 3.71    | 1547 | 173         | 896         | 79  | 7   | 1.84 | 1.02    | -0.90   | 8.84     | 9.88     | 50.00  | 39.47 | 46.53  | 44.37  | 44.90   |
| <a href="#">BMS</a>  | 27.49  | 0.66   | 2.46    | 602  | 170         | 354         | 55  | 56  | 0.78 | 0.45    | 0.66    | 0.77     | -6.11    | 32.50  | 23.20 | 27.35  | 26.26  | 27.03   |
| <a href="#">AV</a>   | 10.69  | 0.15   | 1.42    | 5341 | 149         | 3577        | 44  | 96  | 0.27 | 0.25    | 1.14    | -10.62   | -38.53   | 17.74  | 7.76  | 11.07  | 11.27  | 10.22   |
| <a href="#">PPL</a>  | 29.70  | 0.22   | 0.75    | 2000 | 146         | 1374        | 86  | 64  | 0.29 | 0.57    | -1.43   | -0.30    | 10.68    | 33.68  | 25.52 | 29.54  | 29.73  | 29.54   |
| <a href="#">PTV</a>  | 21.54  | 0.74   | 3.56    | 1419 | 145         | 981         | 59  | 32  | 0.49 | 0.52    | 1.03    | 6.85     | -13.84   | 25.58  | 16.50 | 20.72  | 19.61  | 20.78   |
| <a href="#">BK</a>   | 32.35  | 0.60   | 1.89    | 3450 | 142         | 2433        | 90  | 49  | 0.59 | 0.49    | -0.31   | -0.89    | -4.01    | 34.09  | 26.93 | 32.42  | 31.61  | 30.00   |
| <a href="#">GS</a>   | 127.31 | 1.45   | 1.15    | 3680 | 127         | 2891        | 55  | 80  | 2.19 | 2.31    | -1.79   | -3.99    | 21.94    | 134.99 | 94.75 | 129.85 | 127.03 | 113.01  |
| <a href="#">PBI</a>  | 41.91  | 0.49   | 1.18    | 913  | 125         | 729         | 46  | 26  | 0.52 | 0.52    | -0.73   | 1.75     | -7.95    | 47.50  | 40.34 | 41.79  | 41.50  | 43.32   |
| <a href="#">CSX</a>  | 50.20  | 1.17   | 2.39    | 1386 | 122         | 1139        | 76  | 66  | 1.21 | 0.81    | 1.95    | 2.93     | 25.66    | 50.49  | 36.90 | 48.94  | 46.99  | 44.10   |
| <a href="#">IBM</a>  | 83.12  | 0.64   | 0.78    | 6725 | 119         | 5670        | 43  | 40  | 1.54 | 1.24    | -0.01   | -5.53    | -14.84   | 99.10  | 71.85 | 86.57  | 84.86  | 81.55   |
| <a href="#">PLD</a>  | 46.25  | 0.78   | 1.72    | 1167 | 113         | 1036        | 78  | 54  | 0.56 | 0.68    | -1.00   | 3.21     | 7.79     | 47.00  | 36.50 | 45.75  | 43.56  | 41.80   |
| <a href="#">TIN</a>  | 44.42  | 0.95   | 2.19    | 987  | 112         | 878         | 80  | 59  | 1.16 | 0.60    | 2.09    | 9.68     | 35.97    | 44.65  | 31.58 | 42.71  | 39.65  | 38.07   |
| <a href="#">NFB</a>  | 27.64  | 0.18   | 0.66    | 2256 | 109         | 2076        | 24  | 50  | 0.42 | 0.40    | -1.22   | 2.60     | -5.15    | 30.27  | 23.05 | 27.41  | 26.24  | 27.15   |
| <a href="#">ABI</a>  | 26.68  | 0.41   | 1.56    | 1306 | 106         | 1229        | 53  | 12  | 0.77 | 0.47    | -2.02   | -2.59    | 26.33    | 28.17  | 19.20 | 27.19  | 25.69  | 22.32   |
| <a href="#">GEN7</a> | 73.18  | 2.46   | 3.48    | 2075 | 105         | 1985        | 99  | 53  | 2.34 | 1.67    | 1.94    | -4.21    | 31.48    | 77.82  | 55.15 | 73.29  | 73.07  | 66.82   |

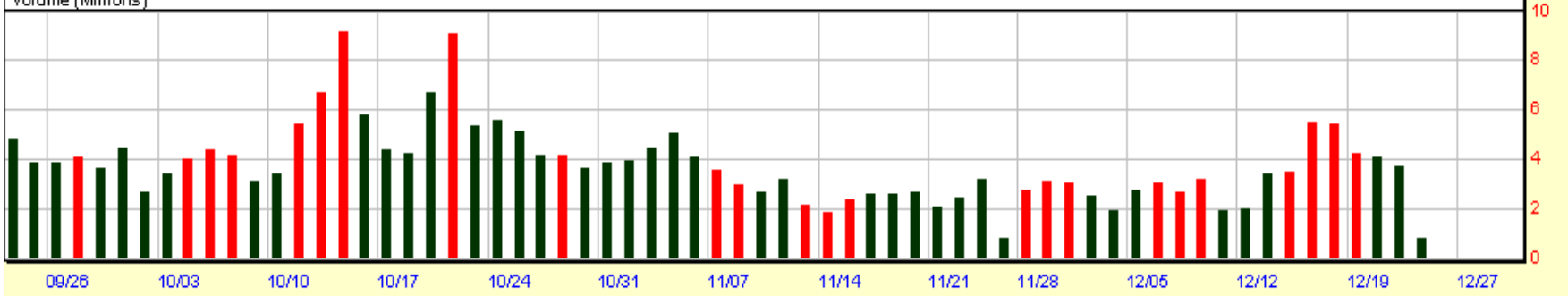
Goldman Sachs Grp 127.76 0.45 0.35%

Exp. Mov. Avg. (8) Last=127.67  
Exp. Mov. Avg. (20) Last=128.61  
Exp. Mov. Avg. (50) Last=126.70  
Exp. Mov. Avg. (89) Last=122.96  
Exp. Mov. Avg. (200) Last=115.68



© 1998-2004 Prophet Financial Systems, Inc. | Terms of use apply.

Volume (Millions)



## Change in Direction Screen

This screen identifies stocks in the S&P 500 and the NDX 100 that have made at least a five-day low and yesterday had a higher high, higher low and closed above the high of the low day. The list is sorted by the Percentage of the 30-Day Average Volume. To learn more about how this screen is used, [click here](#).

[The column definitions can be found here.](#)

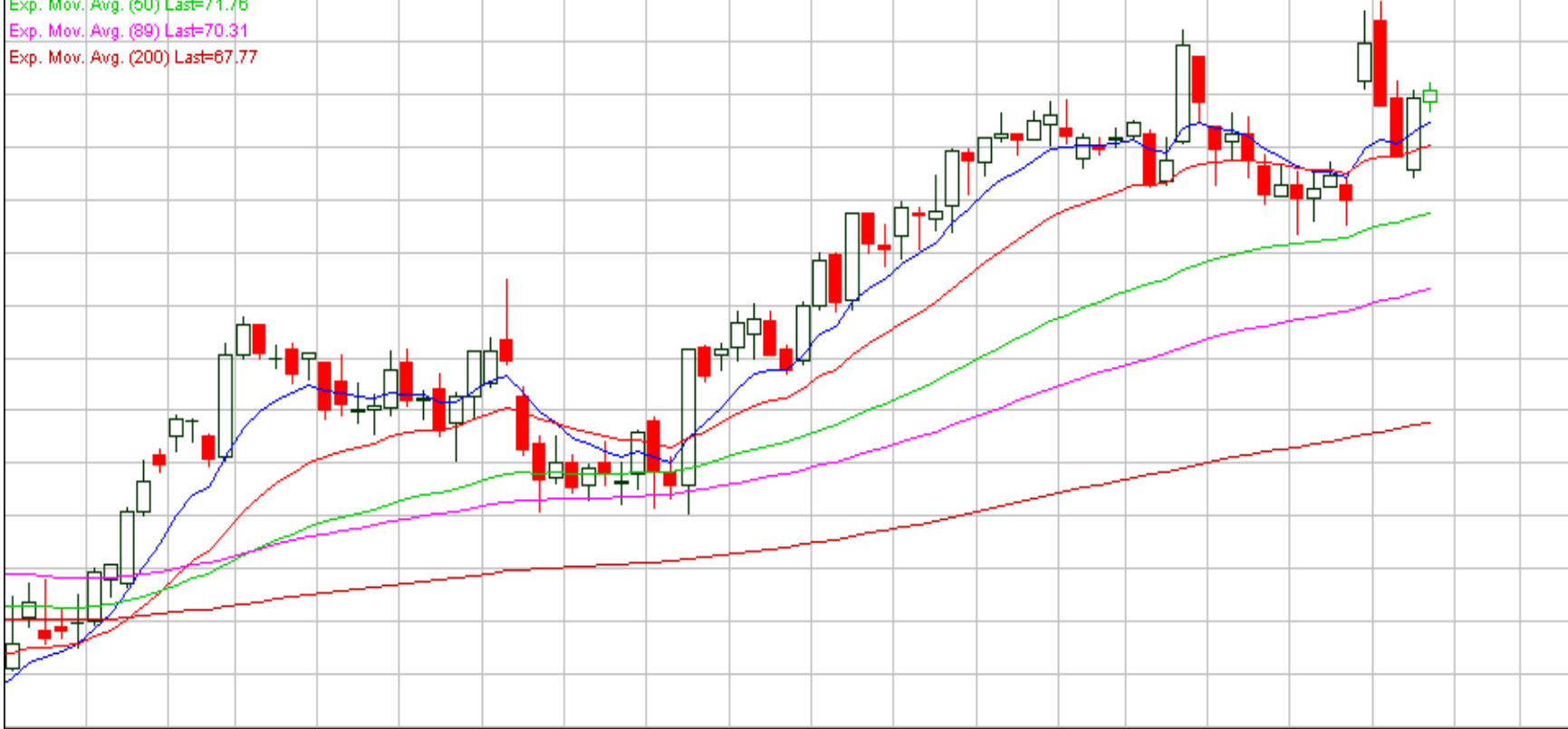
As of the close of December 21, 2005

| <a href="#">Symbol</a> | <a href="#">Close</a> | <a href="#">Pt Chg</a> | <a href="#">Pct Chg</a> | <a href="#">Vol</a> | <a href="#">Pct 30D Vol</a> | <a href="#">Avg 30D Vol</a> | <a href="#">CR1</a> | <a href="#">CR2</a> | <a href="#">Rng</a> | <a href="#">10D Rng</a> | <a href="#">5D% Chg</a> | <a href="#">20D% Chg</a> | <a href="#">52W %Chg</a> | <a href="#">H 52W</a> | <a href="#">L 52W</a> | <a href="#">EMA 20</a> | <a href="#">EMA 50</a> | <a href="#">EMA 200</a> |
|------------------------|-----------------------|------------------------|-------------------------|---------------------|-----------------------------|-----------------------------|---------------------|---------------------|---------------------|-------------------------|-------------------------|--------------------------|--------------------------|-----------------------|-----------------------|------------------------|------------------------|-------------------------|
| <a href="#">FPL</a>    | 42.45                 | -0.31                  | -0.72                   | 3739                | 180                         | 2083                        | 4                   | 7                   | 0.47                | 0.76                    | -0.98                   | -1.21                    | 12.11                    | 48.11                 | 35.90                 | 42.52                  | 42.62                  | 42.27                   |
| <a href="#">MYG</a>    | 18.67                 | -0.30                  | -1.58                   | 748                 | 154                         | 484                         | 31                  | 89                  | 0.39                | 0.33                    | 1.91                    | 4.89                     | -9.85                    | 21.39                 | 9.21                  | 18.16                  | 17.60                  | 16.01                   |
| <a href="#">BLS</a>    | 27.42                 | -0.43                  | -1.54                   | 8288                | 137                         | 6060                        | 28                  | 88                  | 0.40                | 0.34                    | -1.08                   | 0.85                     | -2.35                    | 28.41                 | 24.32                 | 27.64                  | 26.50                  | 26.46                   |
| <a href="#">CBE</a>    | 72.81                 | -1.00                  | -1.35                   | 436                 | 130                         | 335                         | 0                   | 0                   | 1.45                | 1.10                    | 0.80                    | -0.57                    | 7.64                     | 75.75                 | 62.08                 | 73.01                  | 71.44                  | 68.03                   |
| <a href="#">PFE</a>    | 24.00                 | -0.32                  | -1.32                   | 47752               | 120                         | 39676                       | 33                  | 15                  | 0.43                | 0.61                    | 7.58                    | 10.40                    | -3.88                    | 29.21                 | 20.27                 | 21.83                  | 22.12                  | 25.61                   |
| <a href="#">MERQE</a>  | 31.43                 | -1.06                  | -3.26                   | 2346                | 112                         | 2092                        | 4                   | 79                  | 1.62                | 1.03                    | 2.05                    | 12.98                    | -28.09                   | 49.58                 | 22.62                 | 29.47                  | 29.84                  | 38.00                   |
| <a href="#">ADM</a>    | 24.26                 | -0.30                  | -1.22                   | 2320                | 101                         | 2297                        | 15                  | 3                   | 0.62                | 0.47                    | -1.74                   | -0.86                    | 11.03                    | 25.37                 | 17.50                 | 24.34                  | 24.23                  | 22.41                   |
| <a href="#">BMY</a>    | 22.44                 | -0.05                  | -0.22                   | 8020                | 100                         | 7991                        | 75                  | 4                   | 0.40                | 0.36                    | 4.13                    | 0.67                     | -11.34                   | 26.60                 | 20.70                 | 21.89                  | 21.82                  | 24.23                   |
| <a href="#">NEM</a>    | 49.20                 | -0.95                  | -1.89                   | 7139                | 100                         | 7105                        | 17                  | 12                  | 1.85                | 1.36                    | -2.73                   | 4.24                     | 8.25                     | 52.49                 | 34.90                 | 48.55                  | 46.07                  | 41.82                   |
| <a href="#">ABT</a>    | 40.00                 | -0.43                  | -1.06                   | 6429                | 98                          | 6533                        | 13                  | 29                  | 0.80                | 0.81                    | 1.34                    | -0.92                    | -13.23                   | 50.00                 | 37.50                 | 38.88                  | 40.99                  | 45.38                   |
| <a href="#">LLY</a>    | 57.02                 | -0.57                  | -0.99                   | 4184                | 96                          | 4379                        | 10                  | 31                  | 0.81                | 0.95                    | 2.37                    | 12.38                    | 2.17                     | 60.98                 | 49.47                 | 53.09                  | 51.77                  | 54.78                   |
| <a href="#">CZN</a>    | 12.58                 | -0.17                  | -1.33                   | 1778                | 92                          | 1925                        | 6                   | 14                  | 0.18                | 0.22                    | -1.26                   | -0.47                    | -9.69                    | 14.05                 | 12.08                 | 12.76                  | 12.58                  | 13.02                   |
| <a href="#">AMZN</a>   | 48.34                 | -0.84                  | -1.72                   | 8187                | 89                          | 9214                        | 2                   | 0                   | 1.69                | 1.00                    | -1.47                   | 0.78                     | 24.16                    | 50.00                 | 30.59                 | 48.77                  | 45.37                  | 39.75                   |
| <a href="#">AMZN</a>   | 48.34                 | -0.84                  | -1.72                   | 8187                | 89                          | 9214                        | 2                   | 0                   | 1.69                | 1.00                    | -1.47                   | 0.78                     | 24.16                    | 50.00                 | 30.59                 | 48.77                  | 45.37                  | 39.75                   |
| <a href="#">ITW</a>    | 89.11                 | -0.22                  | -0.25                   | 735                 | 88                          | 837                         | 8                   | 3                   | 1.19                | 1.20                    | 0.24                    | 2.10                     | -4.32                    | 94.64                 | 78.50                 | 88.53                  | 85.57                  | 85.15                   |
| <a href="#">FRX</a>    | 41.11                 | -0.59                  | -1.41                   | 1269                | 86                          | 1483                        | 22                  | 16                  | 1.13                | 0.84                    | 0.86                    | 6.75                     | -9.15                    | 46.22                 | 32.46                 | 40.08                  | 38.54                  | 39.08                   |

Cooper Inds Cl A 74.08 0.13 0.18%

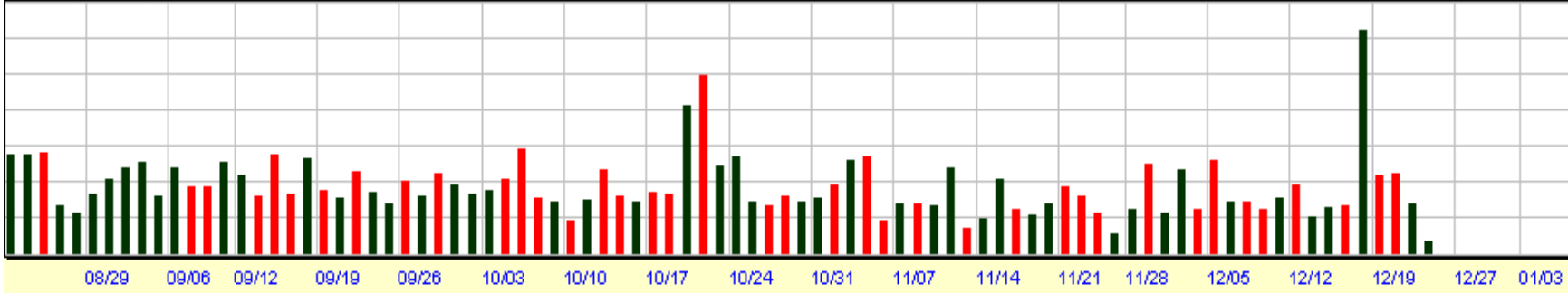
Exp. Mov. Avg. (8) Last=73.46  
Exp. Mov. Avg. (20) Last=73.05  
Exp. Mov. Avg. (50) Last=71.76  
Exp. Mov. Avg. (89) Last=70.31  
Exp. Mov. Avg. (200) Last=67.77

◀ CBE



© 1998-2004 Prophet Financial Systems, Inc. | Terms of use apply.

Volume (Millions)



MI Co Cmn Stk 68.99 0.77 1.13%

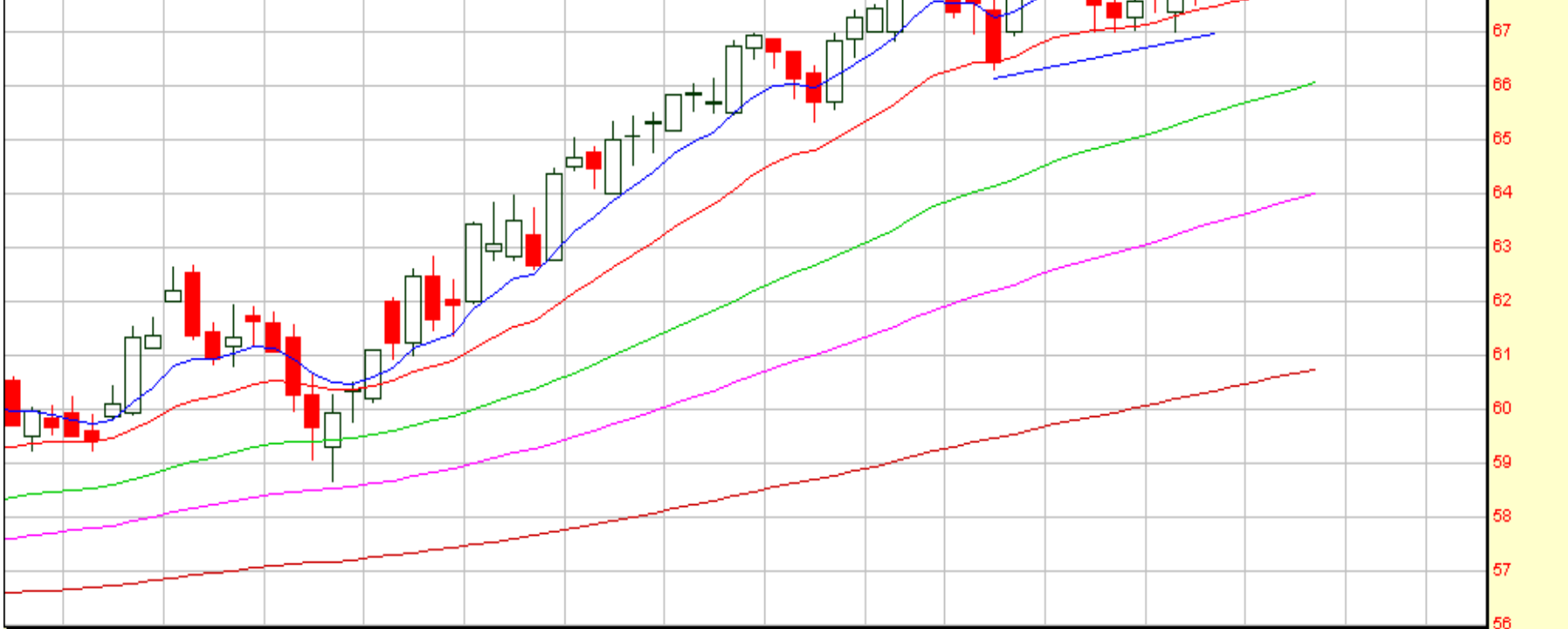
Exp. Mov. Avg. (8) Last=68.44

Exp. Mov. Avg. (20) Last=67.90

Exp. Mov. Avg. (50) Last=66.04

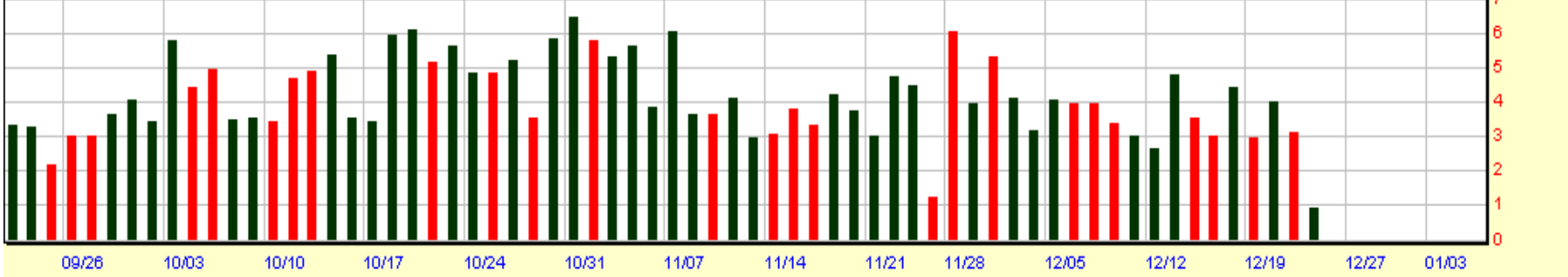
Exp. Mov. Avg. (89) Last=63.99

Exp. Mov. Avg. (200) Last=60.73



© 1998-2004 Prophet Financial Systems, Inc. | Terms of use apply.

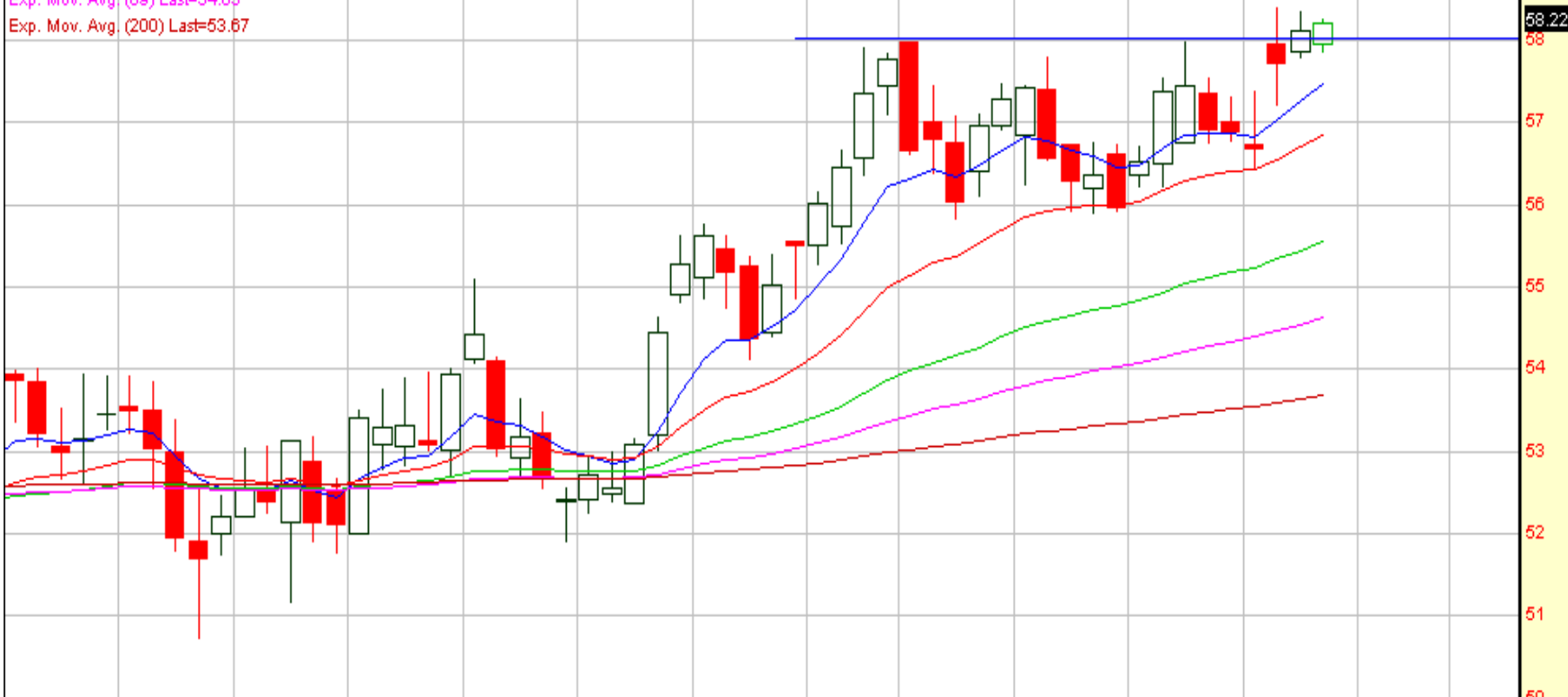
Volume (Millions)



Morgan Stanley 58.22 0.11 0.19%

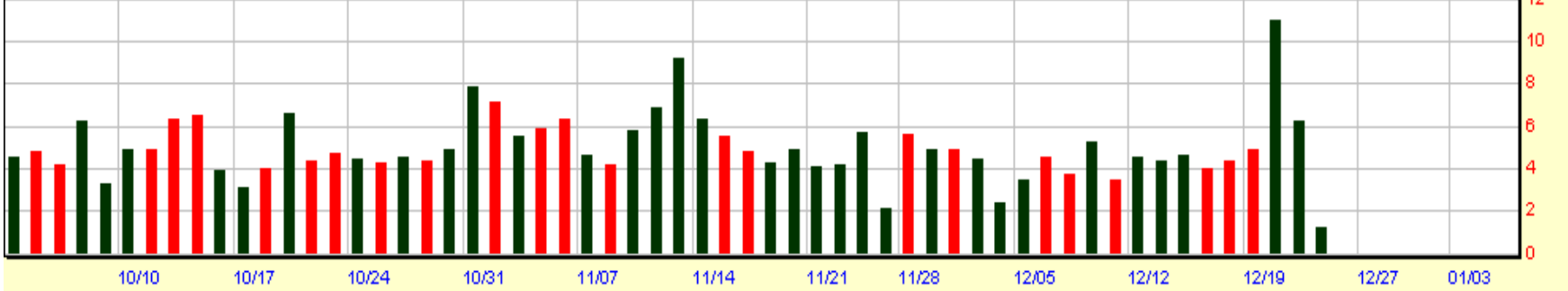
Exp. Mov. Avg. (8) Last=57.47  
Exp. Mov. Avg. (20) Last=56.84  
Exp. Mov. Avg. (50) Last=55.55  
Exp. Mov. Avg. (89) Last=54.63  
Exp. Mov. Avg. (200) Last=53.67

←MWD



© 1998-2004 Prophet Financial Systems, Inc. | Terms of use apply.

Volume (Millions)



## 3 Day Wake Up Call

This screen identifies stocks in the S&P 500 and the NDX 100 that have closed above the previous two days' highs, have the largest daily range for three days and the most daily volume in three days. The list is sorted by the Percentage of the 30-Day Average Volume. To learn more about how this screen is used, [click here](#).

[The column definitions can be found here.](#)

As of the close of December 21, 2005

| Symbol               | Close  | Pt Chg | Pct Chg | Vol   | Pct 30D Vol | Avg 30D Vol | CR1 | CR2 | Rng  | 10D Rng | 5D% Chg | 20D% Chg | 52W %Chg | H 52W  | L 52W | EMA 20 | EMA 50 | EMA 200 |
|----------------------|--------|--------|---------|-------|-------------|-------------|-----|-----|------|---------|---------|----------|----------|--------|-------|--------|--------|---------|
| <a href="#">BNI</a>  | 69.01  | 1.55   | 2.30    | 2166  | 127         | 1702        | 64  | 90  | 1.80 | 1.22    | 3.42    | 4.04     | 46.46    | 69.65  | 44.58 | 66.47  | 63.85  | 55.14   |
| <a href="#">CHKP</a> | 21.16  | 0.91   | 4.47    | 4581  | 221         | 2069        | 87  | 50  | 1.19 | 0.66    | 4.16    | -3.97    | -13.09   | 25.41  | 19.56 | 21.13  | 21.55  | 21.94   |
| <a href="#">CSX</a>  | 50.20  | 1.17   | 2.39    | 1386  | 122         | 1139        | 76  | 66  | 1.21 | 0.81    | 1.95    | 2.93     | 25.66    | 50.49  | 36.90 | 48.94  | 46.99  | 44.10   |
| <a href="#">EFX</a>  | 38.23  | 0.47   | 1.24    | 716   | 96          | 745         | 81  | 21  | 0.64 | 0.74    | 0.29    | 1.95     | 36.34    | 39.00  | 26.97 | 38.22  | 36.57  | 34.66   |
| <a href="#">FDO</a>  | 24.37  | 1.29   | 5.59    | 2701  | 184         | 1464        | 64  | 62  | 1.46 | 0.66    | 6.19    | 3.92     | -18.03   | 35.25  | 19.40 | 22.88  | 22.62  | 24.38   |
| <a href="#">FDX</a>  | 103.70 | 5.21   | 5.29    | 4399  | 289         | 1525        | 90  | 0   | 3.40 | 1.63    | 3.86    | 5.55     | 4.09     | 104.03 | 76.81 | 98.66  | 94.88  | 88.49   |
| <a href="#">JBL</a>  | 37.04  | 2.50   | 7.24    | 4827  | 409         | 1182        | 91  | 24  | 3.80 | 0.98    | 5.62    | 13.52    | 47.39    | 37.40  | 21.80 | 34.35  | 32.09  | 30.06   |
| <a href="#">JP</a>   | 57.17  | 1.66   | 2.99    | 760   | 110         | 692         | 80  | 28  | 1.69 | 0.70    | 1.73    | 3.38     | 9.12     | 57.50  | 47.11 | 55.74  | 54.70  | 51.06   |
| <a href="#">LNC</a>  | 53.73  | 2.23   | 4.33    | 2174  | 200         | 1090        | 90  | 30  | 1.65 | 0.74    | 2.42    | 3.35     | 16.12    | 54.41  | 41.59 | 52.08  | 50.65  | 48.07   |
| <a href="#">NOVL</a> | 9.10   | 0.28   | 3.17    | 12719 | 219         | 5813        | 69  | 90  | 0.54 | 0.27    | 5.32    | 14.18    | 31.12    | 9.27   | 4.94  | 8.38   | 7.89   | 6.65    |
| <a href="#">ODP</a>  | 30.80  | 1.28   | 4.34    | 2811  | 159         | 1764        | 70  | 53  | 1.63 | 0.86    | 4.44    | 4.37     | 78.14    | 31.52  | 16.50 | 29.62  | 28.29  | 25.45   |
| <a href="#">ROH</a>  | 48.61  | 1.74   | 3.71    | 1547  | 173         | 896         | 79  | 7   | 1.84 | 1.02    | -0.90   | 8.84     | 9.88     | 50.00  | 39.47 | 46.53  | 44.37  | 44.90   |
| <a href="#">TIN</a>  | 44.42  | 0.95   | 2.19    | 987   | 112         | 878         | 80  | 59  | 1.16 | 0.60    | 2.09    | 9.68     | 35.97    | 44.65  | 31.58 | 42.71  | 39.65  | 38.07   |
| <a href="#">TSN</a>  | 17.06  | 0.19   | 1.11    | 1370  | 91          | 1513        | 67  | 75  | 0.38 | 0.23    | 1.86    | 1.67     | -2.68    | 19.91  | 15.69 | 16.70  | 17.30  | 17.67   |
| <a href="#">UNM</a>  | 22.34  | 0.34   | 1.55    | 1810  | 134         | 1351        | 91  | 100 | 0.43 | 0.33    | 1.36    | -0.18    | 28.10    | 22.69  | 15.50 | 22.11  | 21.31  | 19.16   |
| <a href="#">UPS</a>  | 76.62  | 1.39   | 1.85    | 5395  | 192         | 2817        | 34  | 39  | 1.88 | 1.29    | 0.64    | -3.96    | -11.63   | 87.09  | 66.10 | 76.85  | 74.98  | 72.23   |
| <a href="#">WM</a>   | 44.54  | 1.49   | 3.46    | 7070  | 154         | 4603        | 70  | 52  | 1.75 | 1.07    | 0.81    | 4.55     | 6.05     | 45.06  | 36.64 | 42.47  | 40.62  | 40.86   |

Temple Inland Inc 44.40 -0.02 -0.05%

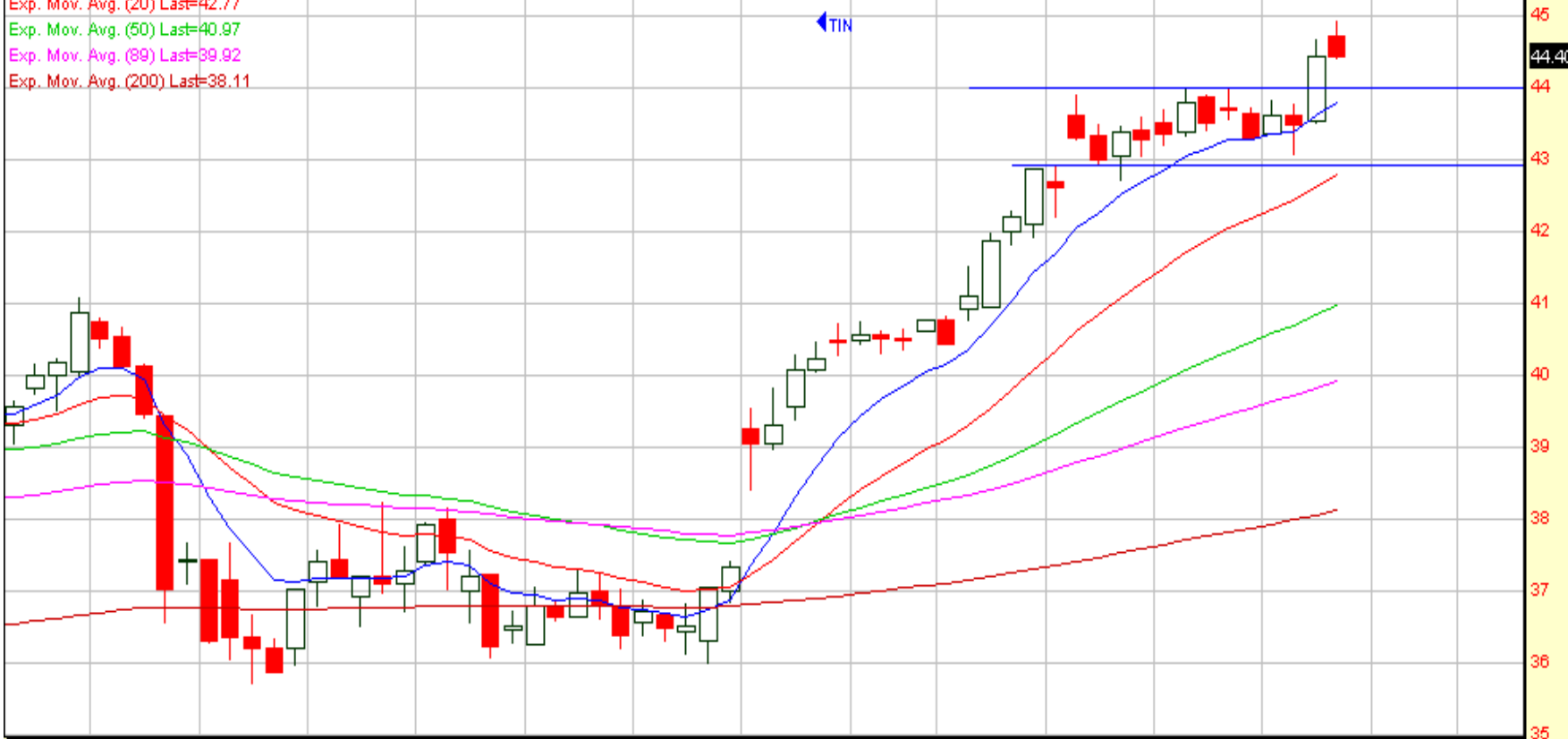
Exp. Mov. Avg. (8) Last=43.79

Exp. Mov. Avg. (20) Last=42.77

Exp. Mov. Avg. (50) Last=40.97

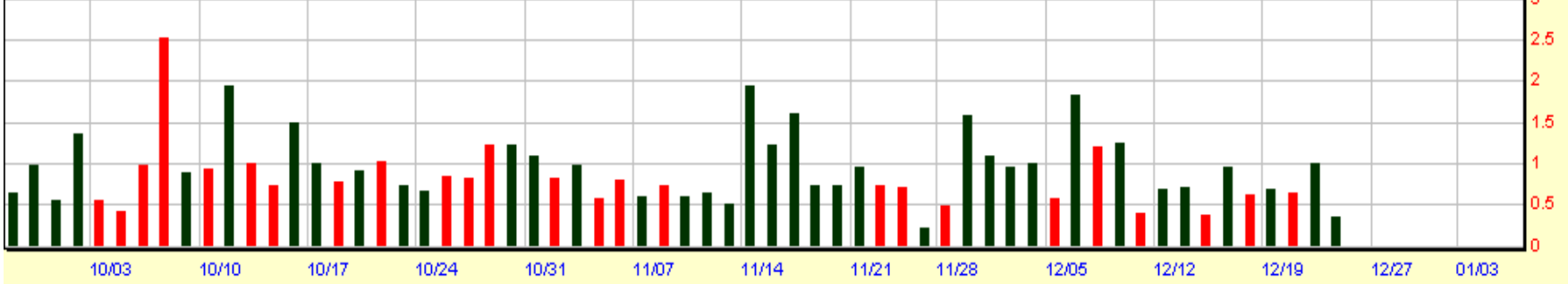
Exp. Mov. Avg. (89) Last=39.92

Exp. Mov. Avg. (200) Last=38.11



© 1998-2004 Prophet Financial Systems, Inc. | Terms of use apply.

Volume (Millions)



| [NDXX](#) | [SPXX](#) | [WAKE \(Wake down\)](#) | [CIDU \(CID Down\)](#) |

### 3 Day Wake Up Call - Down

This screen identifies stocks in the S&P 500 and the NDX 100 that have closed above the previous two days' highs, have the largest daily range for three days and the most daily volume in three days. The list is sorted by the Percentage of the 30-Day Average Volume. To learn more about how this screen is used, [click here](#).

[The column definitions can be found here.](#)

As of the close of December 21, 2005

| <a href="#">Symbol</a> | <a href="#">Close</a> | <a href="#">Pt Chg</a> | <a href="#">Pct Chg</a> | <a href="#">Vol</a> | <a href="#">Pct 30D Vol</a> | <a href="#">Avg 30D Vol</a> | <a href="#">CR1</a> | <a href="#">CR2</a> | <a href="#">Rng</a> | <a href="#">10D Rng</a> | <a href="#">5D% Chg</a> | <a href="#">20D% Chg</a> | <a href="#">52W %Chg</a> | <a href="#">H 52W</a> | <a href="#">L 52W</a> | <a href="#">EMA 20</a> | <a href="#">EMA 50</a> | <a href="#">EMA 200</a> |
|------------------------|-----------------------|------------------------|-------------------------|---------------------|-----------------------------|-----------------------------|---------------------|---------------------|---------------------|-------------------------|-------------------------|--------------------------|--------------------------|-----------------------|-----------------------|------------------------|------------------------|-------------------------|
| <a href="#">BLS</a>    | 27.42                 | -0.43                  | -1.54                   | 8288                | 137                         | 6060                        | 28                  | 88                  | 0.40                | 0.34                    | 1.08                    | 0.85                     | -2.35                    | 28.41                 | 24.32                 | 27.64                  | 26.50                  | 26.46                   |
| <a href="#">CIEN</a>   | 2.72                  | -0.10                  | -3.55                   | 12720               | 124                         | 10259                       | 28                  | 11                  | 0.18                | 0.14                    | -4.90                   | -0.37                    | -2.51                    | 3.50                  | 1.64                  | 2.90                   | 2.67                   | 2.30                    |
| <a href="#">GM</a>     | 19.85                 | -1.20                  | -5.70                   | 33486               | 194                         | 17297                       | 15                  | 3                   | 1.43                | 0.88                    | -10.99                  | -15.82                   | -49.80                   | 40.82                 | 19.63                 | 22.38                  | 24.81                  | 30.33                   |
| <a href="#">NTAP</a>   | 28.00                 | -0.93                  | -3.21                   | 8748                | 201                         | 4347                        | 17                  | 5                   | 1.14                | 0.71                    | -4.60                   | -3.51                    | -17.74                   | 34.98                 | 22.50                 | 29.29                  | 27.85                  | 27.04                   |
| <a href="#">SUNW</a>   | 4.23                  | -0.08                  | -1.86                   | 47829               | 94                          | 51042                       | 37                  | 0                   | 0.19                | 0.17                    | -5.79                   | 11.61                    | -19.43                   | 5.65                  | 3.42                  | 4.12                   | 3.96                   | 3.88                    |