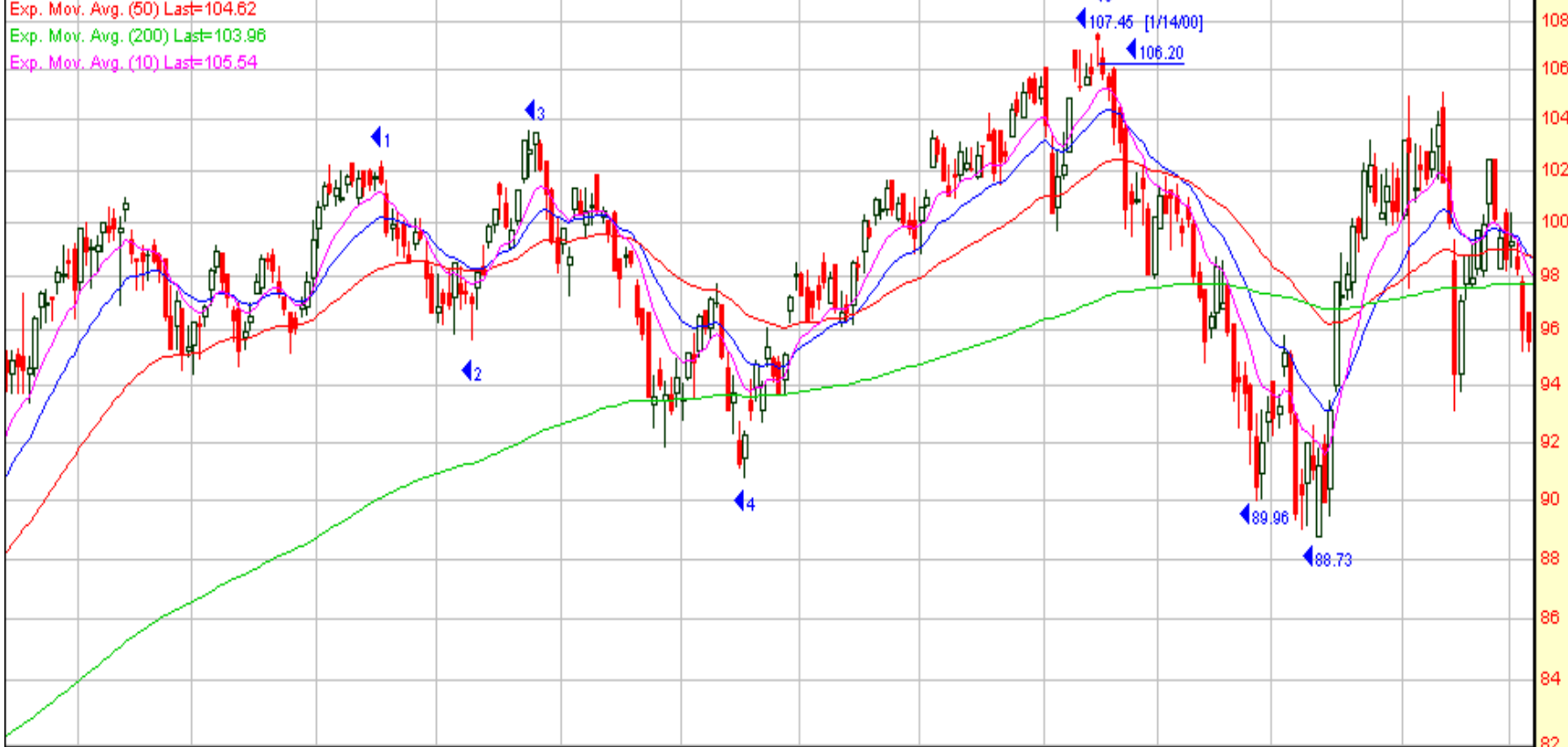


THE KEVIN HAGGERTY
INNER CIRCLE
TRAINING PROGRAM

June 21, 2005

Diamonds Trustseries1 105.96 0.00 0.00%

Exp. Mov. Avg. (20) Last=105.12
Exp. Mov. Avg. (50) Last=104.62
Exp. Mov. Avg. (200) Last=103.96
Exp. Mov. Avg. (10) Last=105.54



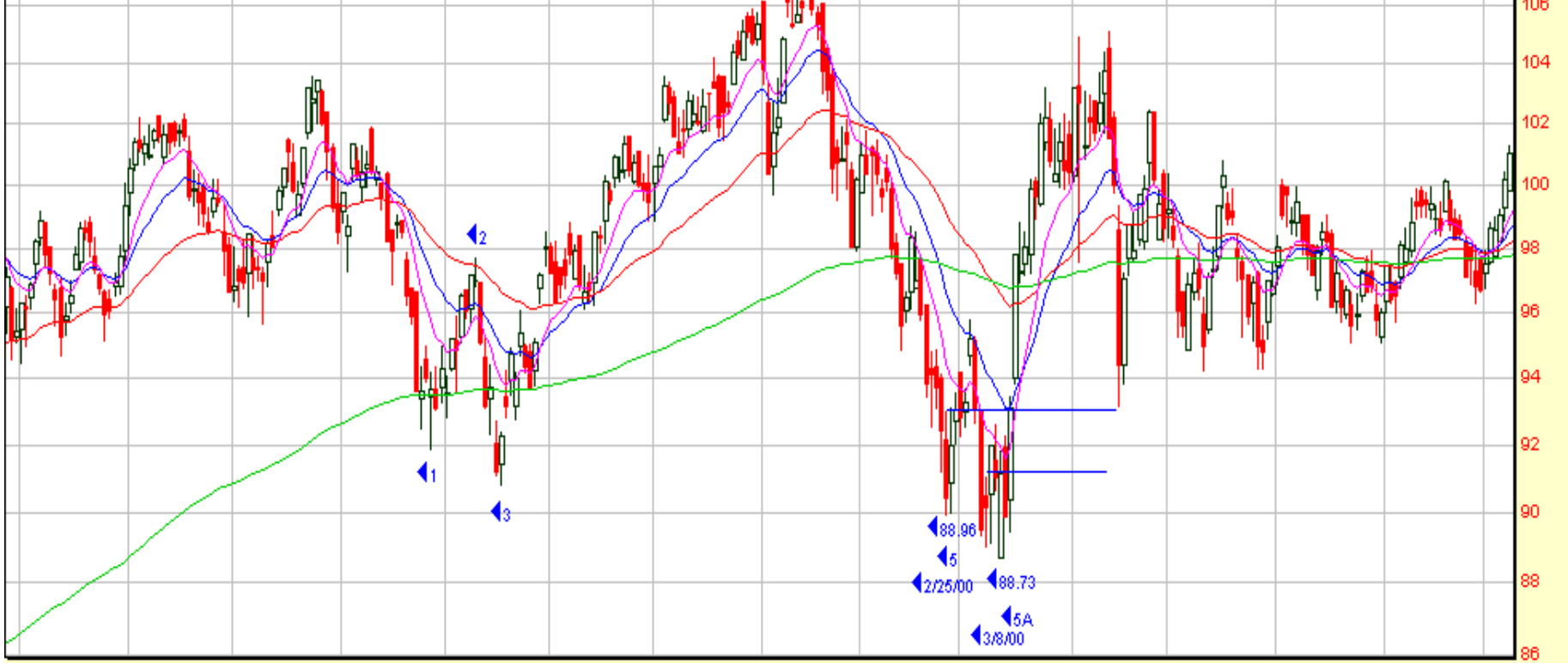
© 1998-2004 Prophet Financial Systems, Inc. | Terms of use apply.

RSI, Wilder (9)

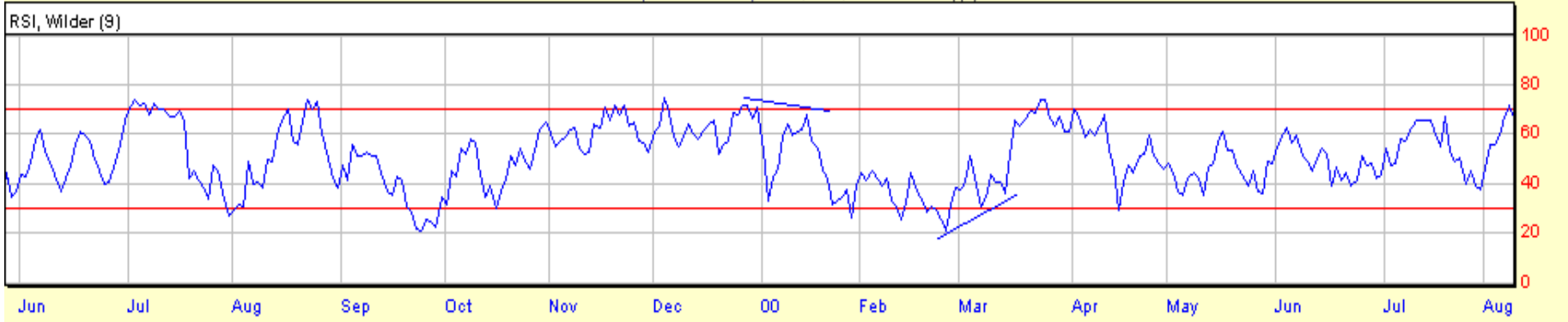


Diamonds Trustseries1 105.96 0.00 0.00%

Exp. Mov. Avg. (20) Last=105.12
Exp. Mov. Avg. (50) Last=104.62
Exp. Mov. Avg. (200) Last=103.96
Exp. Mov. Avg. (10) Last=105.54

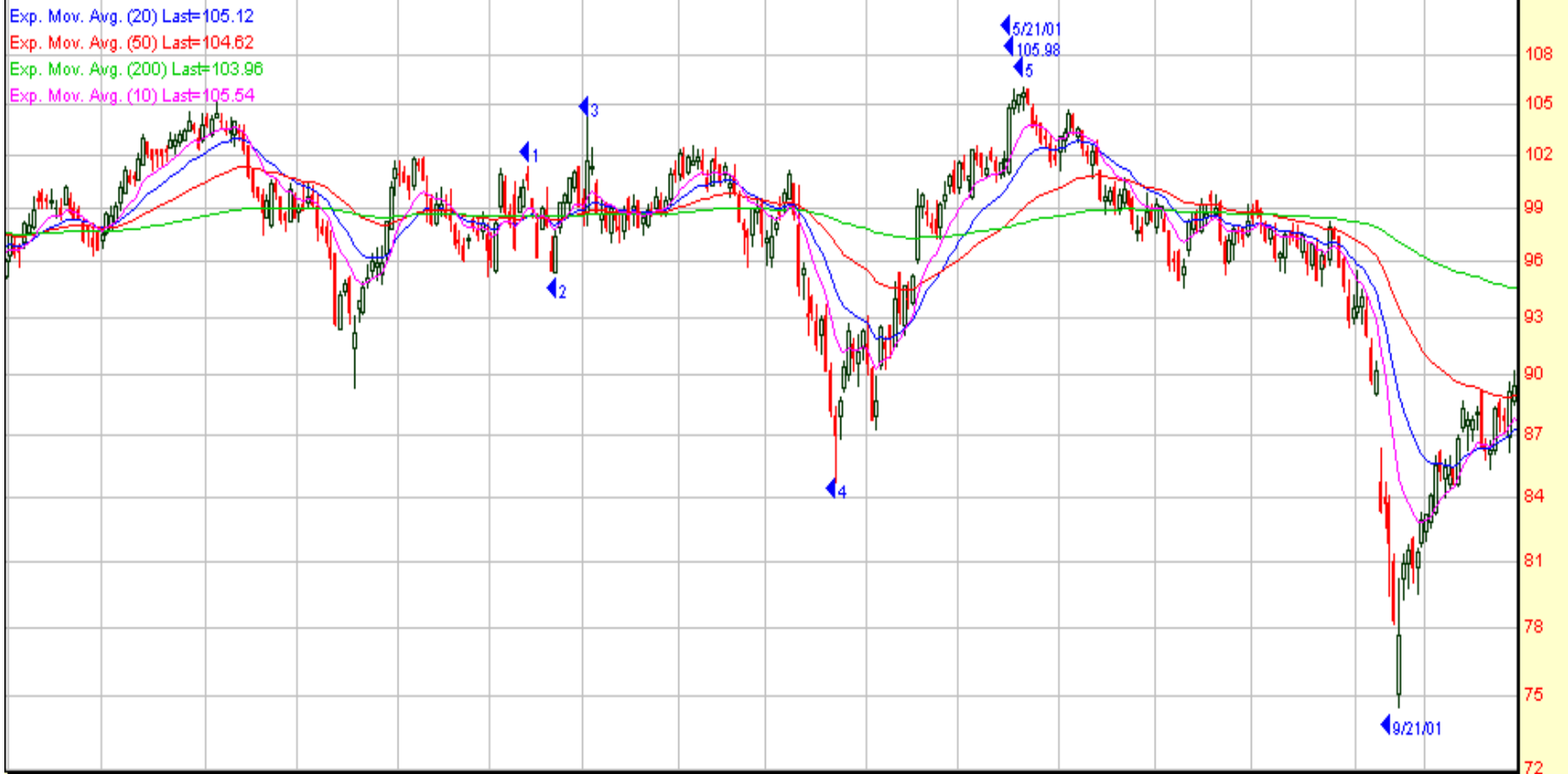


© 1998-2004 Prophet Financial Systems, Inc. | Terms of use apply.



Diamonds Trustseries1 106.08 0.12 0.11%

Exp. Mov. Avg. (20) Last=105.12
Exp. Mov. Avg. (50) Last=104.62
Exp. Mov. Avg. (200) Last=103.96
Exp. Mov. Avg. (10) Last=105.54



© 1998-2004 Prophet Financial Systems, Inc. | Terms of use apply.

RSI, Wilder (9)



Diamonds Trustseries1 105.96 0.00 0.00%

Exp. Mov. Avg. (20) Last=105.12

Exp. Mov. Avg. (50) Last=104.82

Exp. Mov. Avg. (200) Last=103.96

Exp. Mov. Avg. (10) Last=105.54



© 1998-2004 Prophet Financial Systems, Inc. | Terms of use apply.

RSI, Wilder (9)



01 Feb Mar Apr May Jun Jul Aug Sep Oct

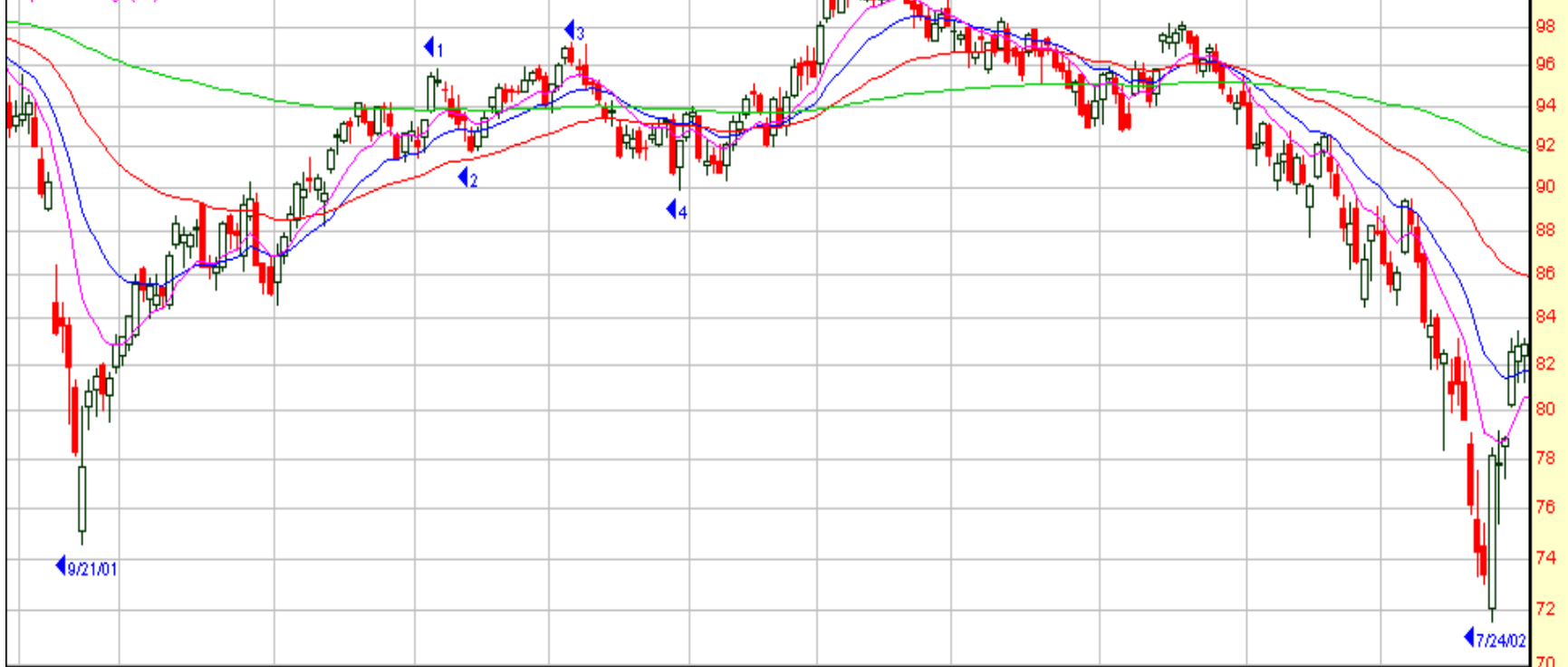
Diamonds Trustseries1 106.08 0.12 0.11%

Exp. Mov. Avg. (20) Last=105.12

Exp. Mov. Avg. (50) Last=104.62

Exp. Mov. Avg. (200) Last=103.96

Exp. Mov. Avg. (10) Last=105.54



© 1998-2004 Prophet Financial Systems, Inc. | Terms of use apply.

RSI, Wilder (9)



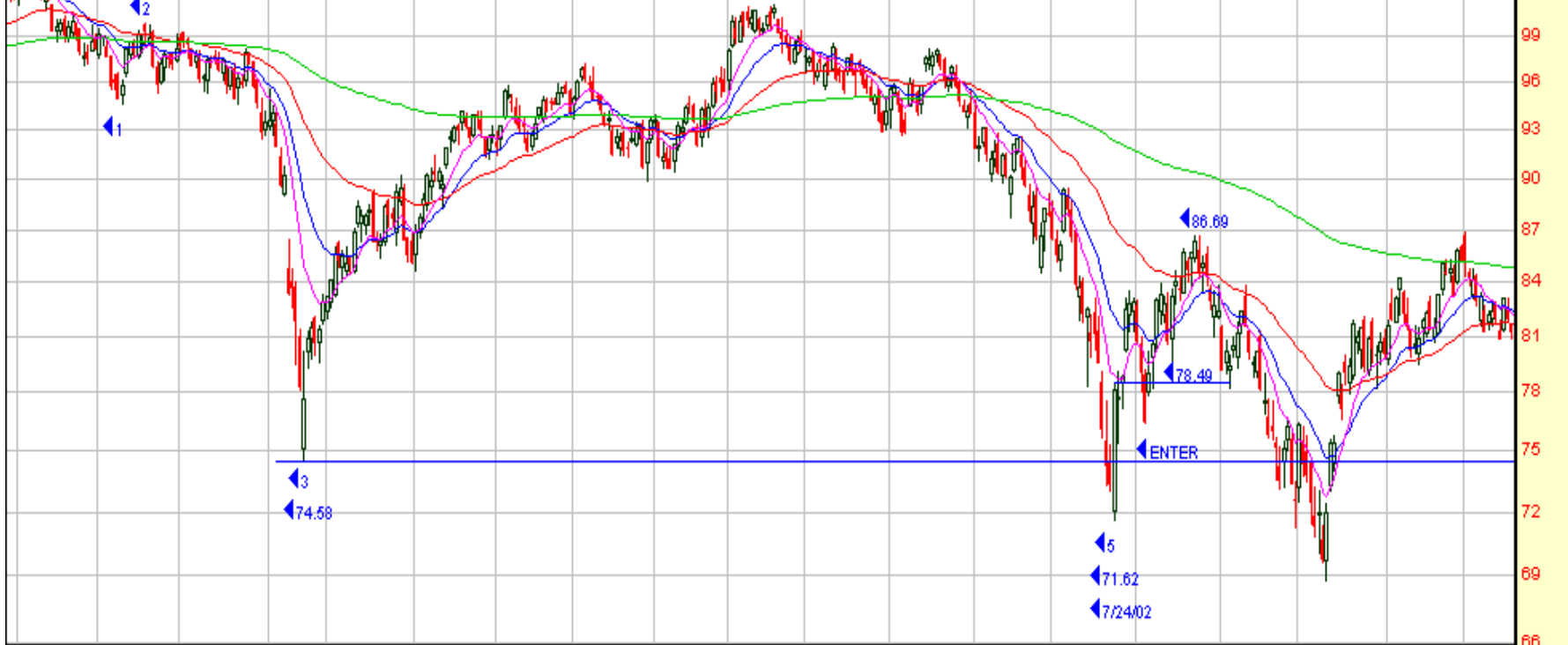
Diamonds Trustseries1 106.08 0.12 0.11%

Exp. Mov. Avg. (20) Last=105.12

Exp. Mov. Avg. (50) Last=104.62

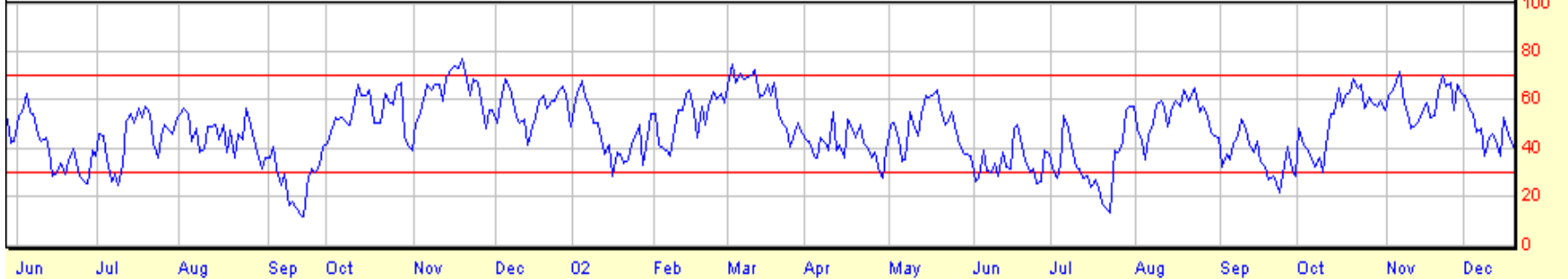
Exp. Mov. Avg. (200) Last=103.96

Exp. Mov. Avg. (10) Last=105.54



© 1998-2004 Prophet Financial Systems, Inc. | Terms of use apply.

RSI, Wilder (9)



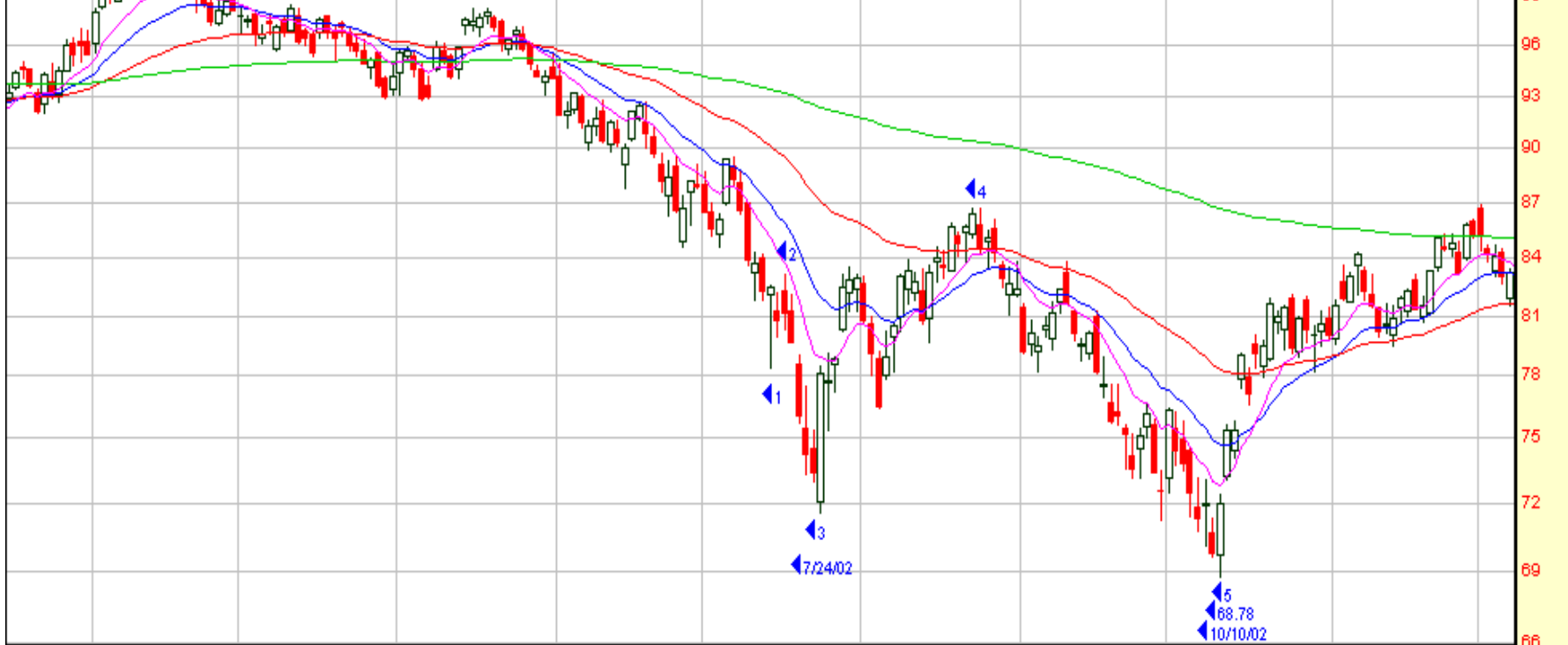
Diamonds Trustseries1 106.08 0.12 0.11%

Exp. Mov. Avg. (20) Last=105.12

Exp. Mov. Avg. (50) Last=104.62

Exp. Mov. Avg. (200) Last=103.96

Exp. Mov. Avg. (10) Last=105.54



© 1998-2004 Prophet Financial Systems, Inc. | Terms of use apply.

RSI, Wilder (9)



Diamonds Trustseries1 106.07 0.11 0.10%

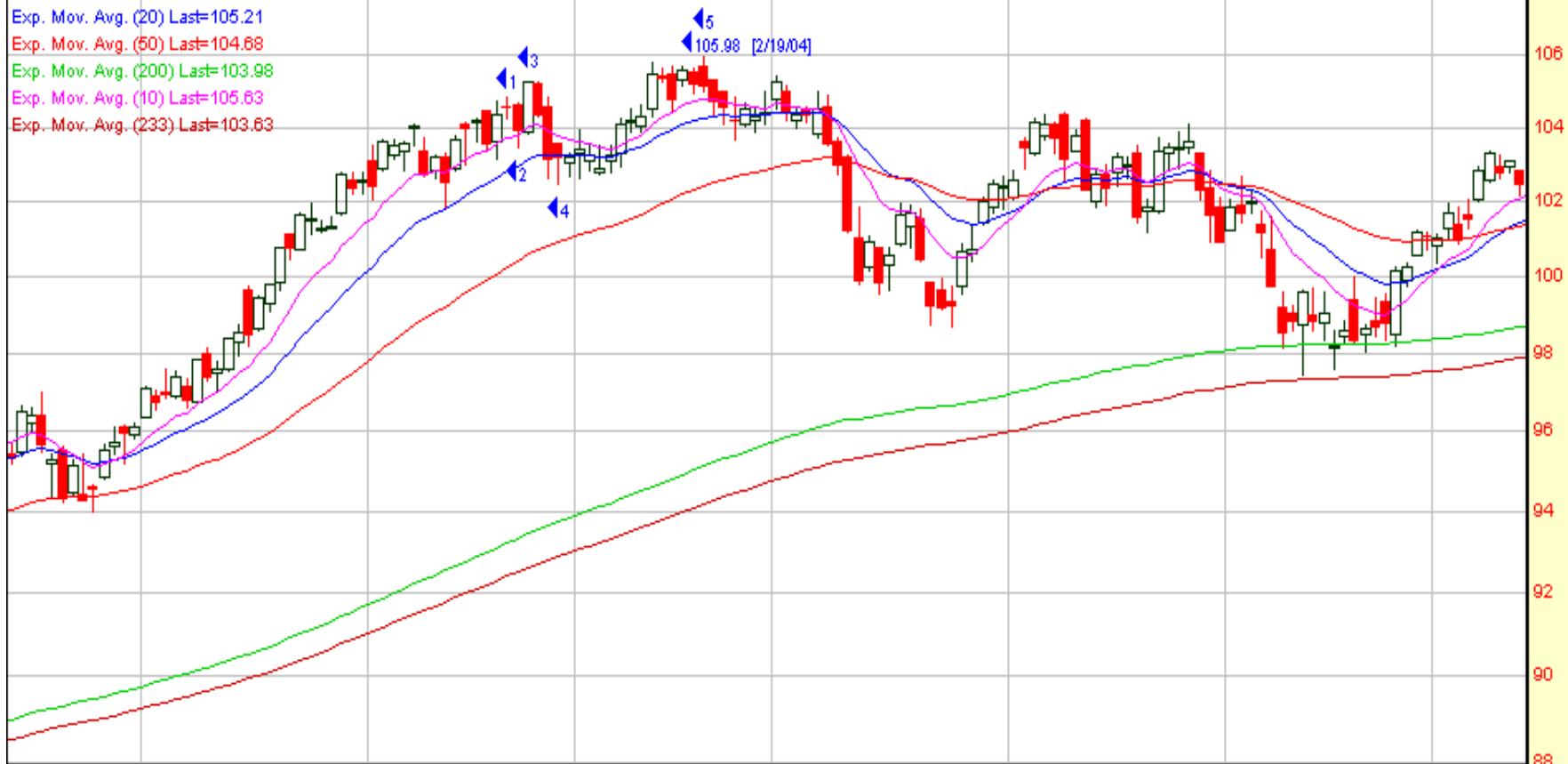
Exp. Mov. Avg. (20) Last=105.21

Exp. Mov. Avg. (50) Last=104.68

Exp. Mov. Avg. (200) Last=103.98

Exp. Mov. Avg. (10) Last=105.63

Exp. Mov. Avg. (233) Last=103.63



© 1998-2004 Prophet Financial Systems, Inc. | Terms of use apply.

RSI, Wilder (9)



Diamonds Trustseries1 106.05 0.09 0.08%

Exp. Mov. Avg. (20) Last=105.20

Exp. Mov. Avg. (50) Last=104.68

Exp. Mov. Avg. (200) Last=103.98

Exp. Mov. Avg. (10) Last=105.62

Exp. Mov. Avg. (233) Last=103.81



© 1998-2004 Prophet Financial Systems, Inc. | Terms of use apply.

RSI, Wilder (9)



Diamonds Trustseries1 106.05 0.09 0.08%

Exp. Mov. Avg. (20) Last=105.20

Exp. Mov. Avg. (50) Last=104.68 ◀ 106 WAVE 3 HIGH

Exp. Mov. Avg. (200) Last=101.99

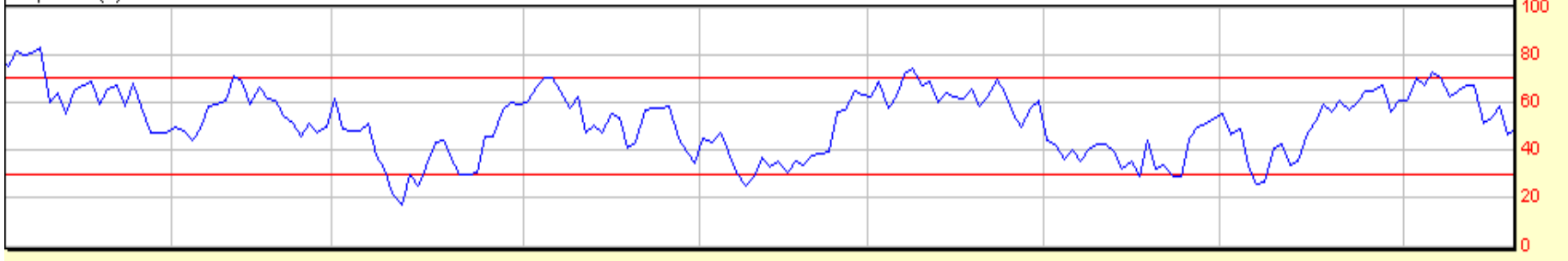
Exp. Mov. Avg. (10) Last=105.83

Exp. Mov. Avg. (258) Last=107.63



© 1998-2004 Prophet Financial Systems, Inc. | Terms of use apply.

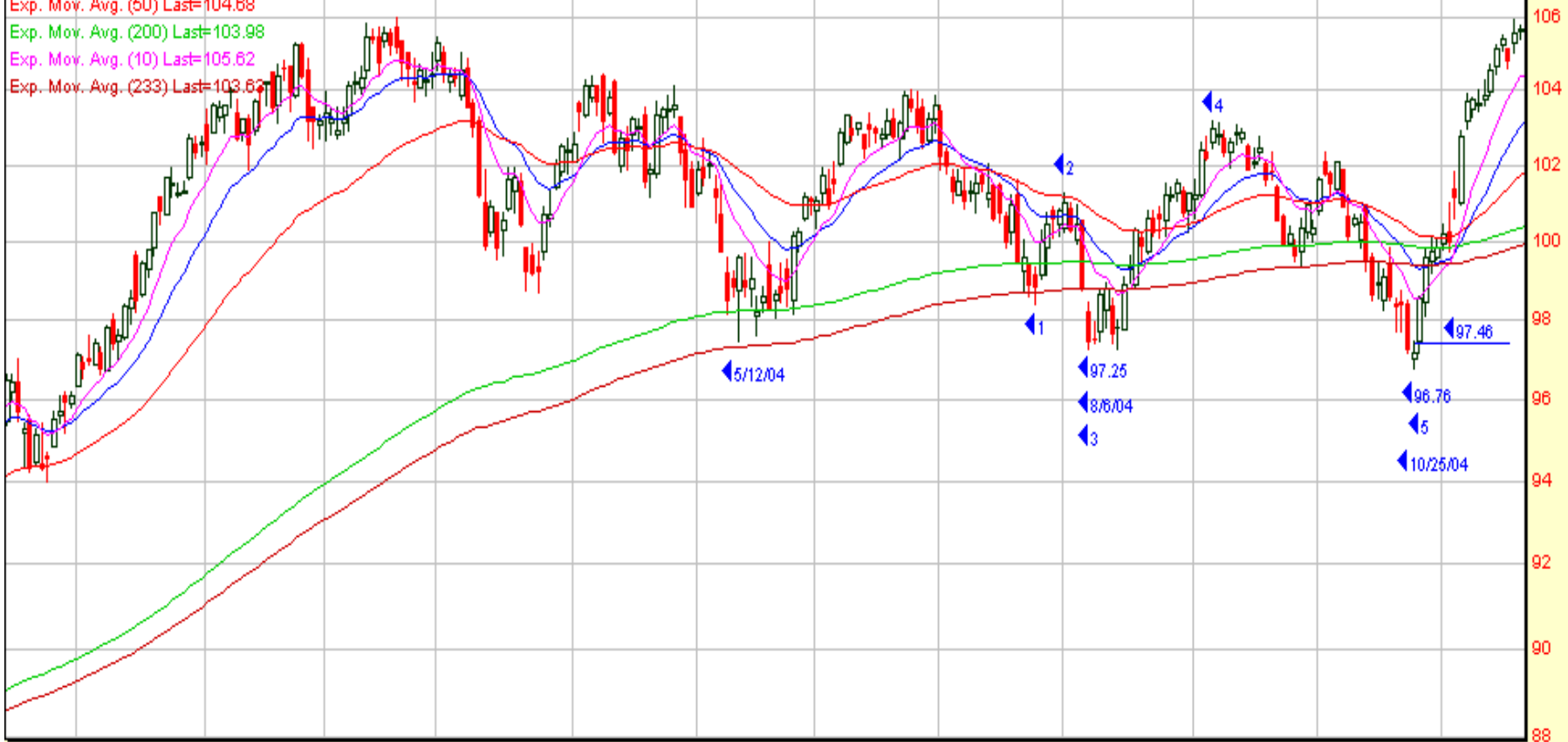
RSI, Wilder (9)



04 Feb Mar Apr May Jun Jul Aug Sep

Diamonds Trustseries1 106.00 0.04 0.04%

Exp. Mov. Avg. (20) Last=105.20
Exp. Mov. Avg. (50) Last=104.68
Exp. Mov. Avg. (200) Last=103.98
Exp. Mov. Avg. (10) Last=105.62
Exp. Mov. Avg. (233) Last=103.62



© 1998-2004 Prophet Financial Systems, Inc. | Terms of use apply.



Diamonds Trustseries1 106.02 0.06 0.06%

Exp. Mov. Avg. (20) Last=105.20

Exp. Mov. Avg. (50) Last=104.68

Exp. Mov. Avg. (200) Last=103.98

Exp. Mov. Avg. (10) Last=105.62

Exp. Mov. Avg. (233) Last=103.63



© 1998-2004 Prophet Financial Systems, Inc. | Terms of use apply.

RSI, Wilder (9)



Jul

Aug

Sep

Oct

Nov

Dec

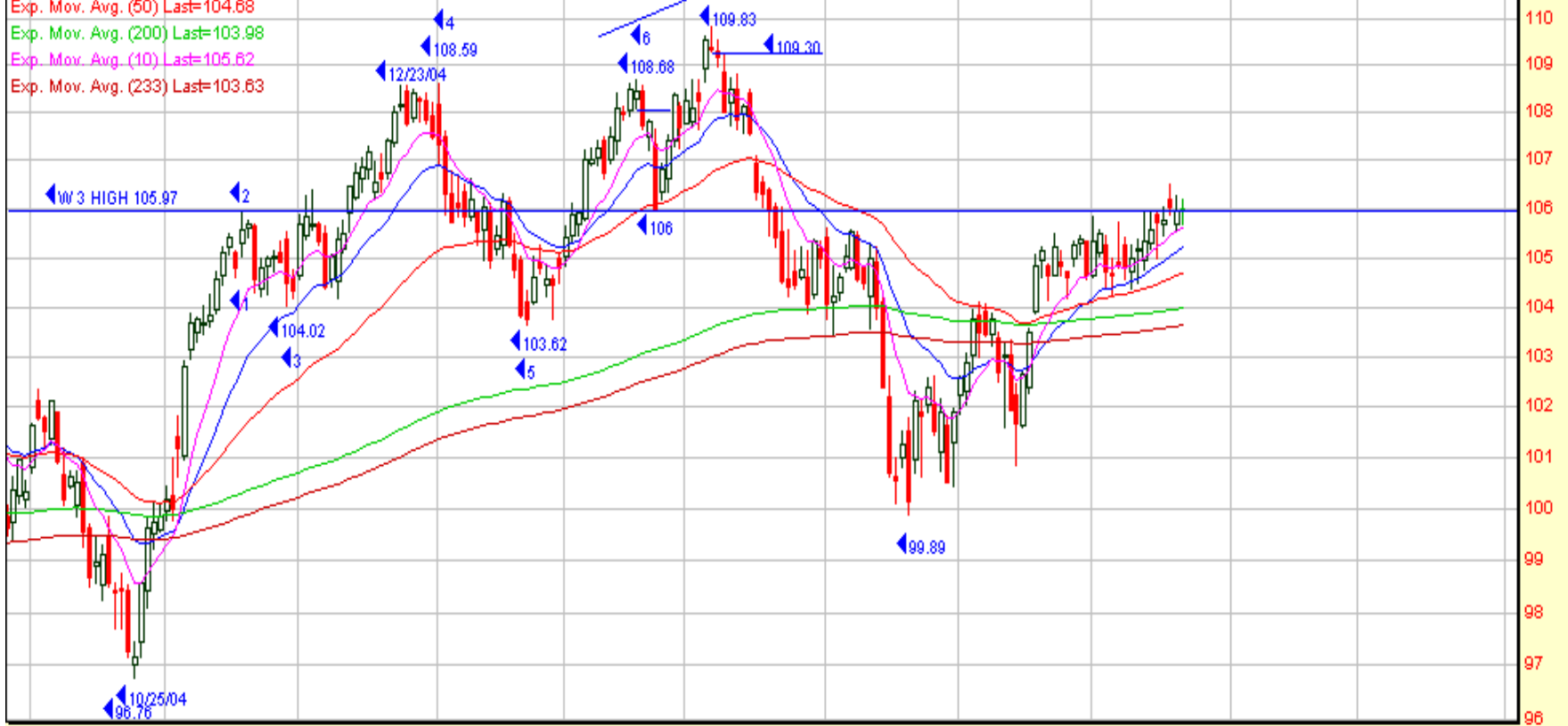
05

Feb

Mar

Diamonds Trustseries1 106.01 0.05 0.05%

Exp. Mov. Avg. (20) Last=105.20
Exp. Mov. Avg. (50) Last=104.68
Exp. Mov. Avg. (200) Last=103.98
Exp. Mov. Avg. (10) Last=105.62
Exp. Mov. Avg. (233) Last=103.63

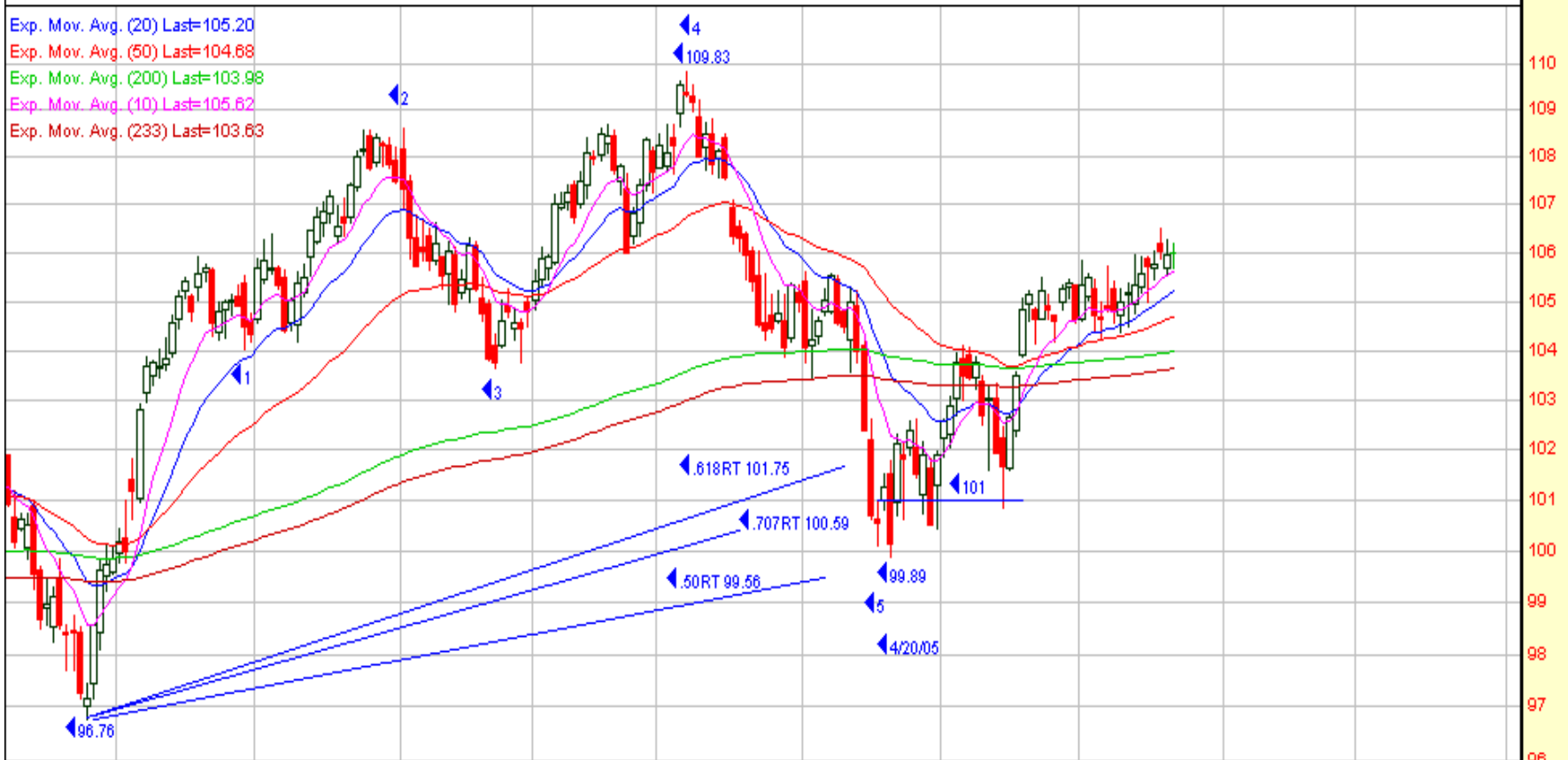


RSI, Wilder (9)



Diamonds Trustseries1 106.01 0.05 0.05%

Exp. Mov. Avg. (20) Last=105.20
Exp. Mov. Avg. (50) Last=104.68
Exp. Mov. Avg. (200) Last=103.98
Exp. Mov. Avg. (10) Last=105.62
Exp. Mov. Avg. (233) Last=103.63



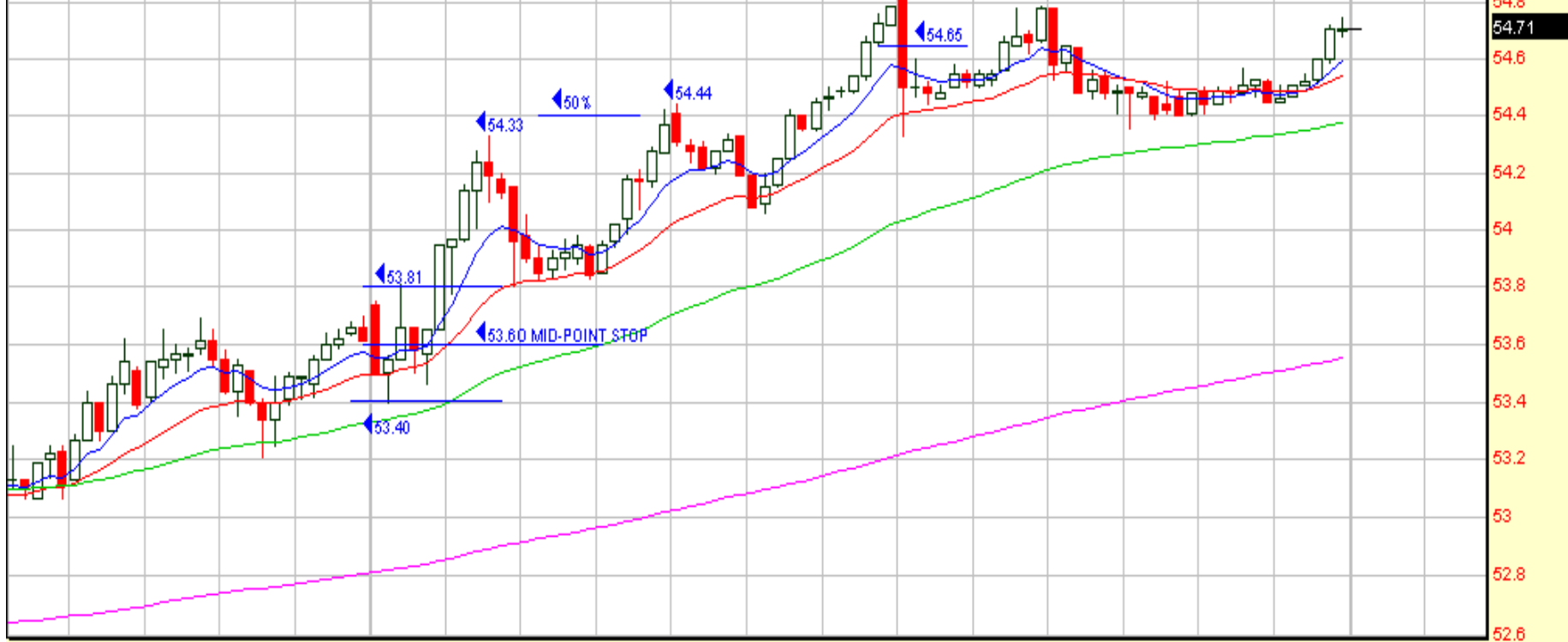
© 1998-2004 Prophet Financial Systems, Inc. | Terms of use apply.



Oct Nov Dec 05 Feb Mar Apr May Jun Jul Aug Sep

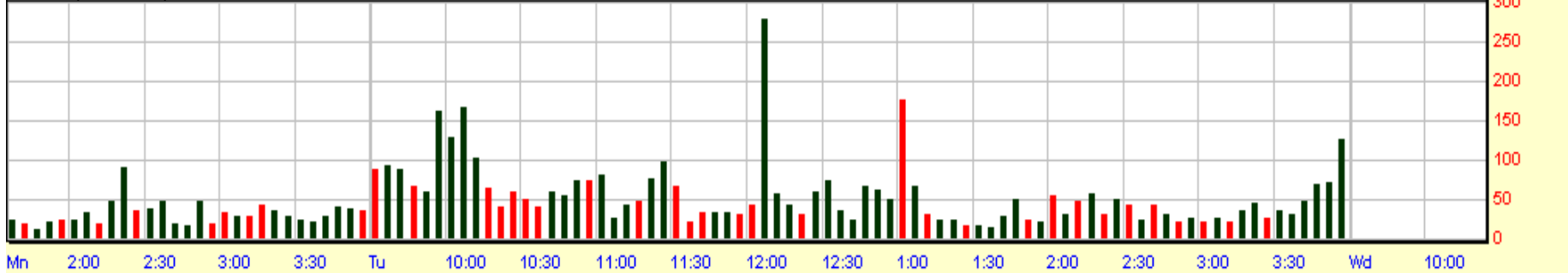
TRANSOCEAN INC 54.71 1.10 2.05%

Exp. Mov. Avg. (8) Last=54.59
Exp. Mov. Avg. (20) Last=54.54
Exp. Mov. Avg. (60) Last=54.38
Exp. Mov. Avg. (240) Last=53.55



© 1998-2004 Prophet Financial Systems, Inc. | Terms of use apply.

Volume (Thousands)



DIAMOND OFFSHORE DRILLING 54.24 2.28 4.39%

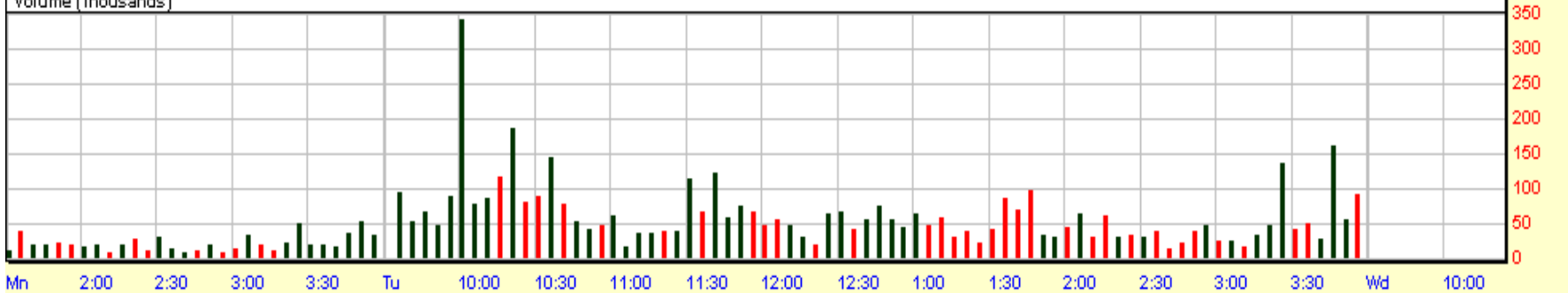
Exp. Mov. Avg. (8) Last=54.09
Exp. Mov. Avg. (20) Last=54.05
Exp. Mov. Avg. (60) Last=53.88
Exp. Mov. Avg. (240) Last=52.23

◀ DO 5 MIN 6/14/05



© 1998-2004 Prophet Financial Systems, Inc. | Terms of use apply.

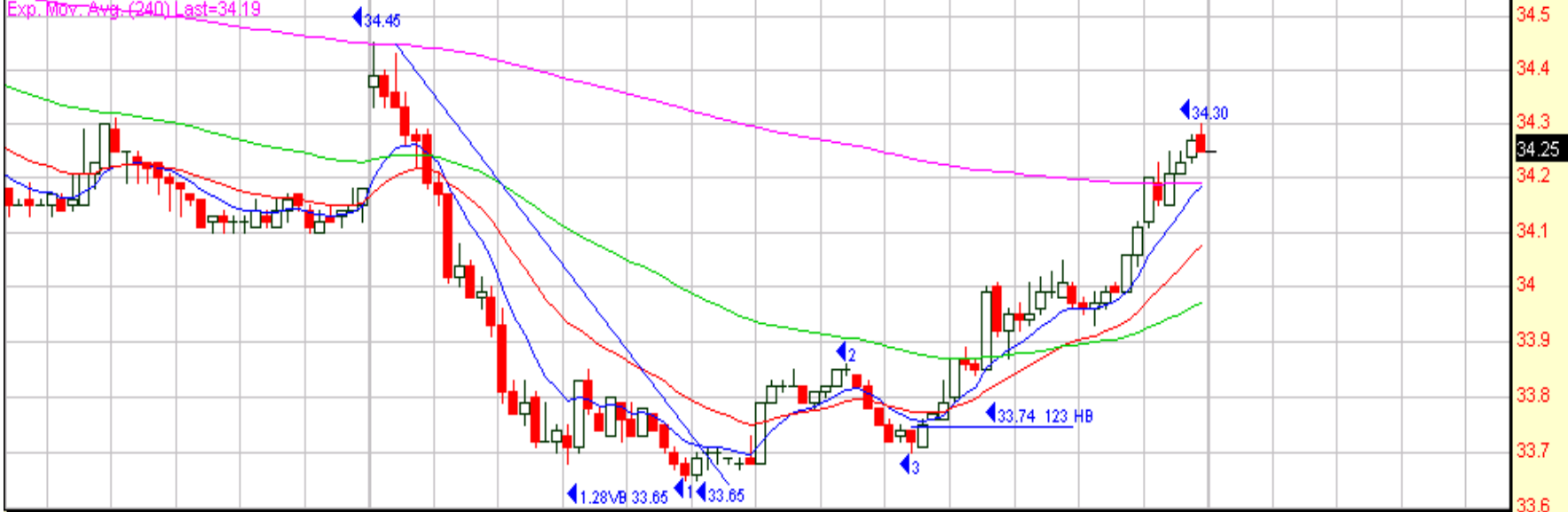
Volume (Thousands)



SEMICONDUCTOR HLDRS TR 34.25 0.00 0.00%

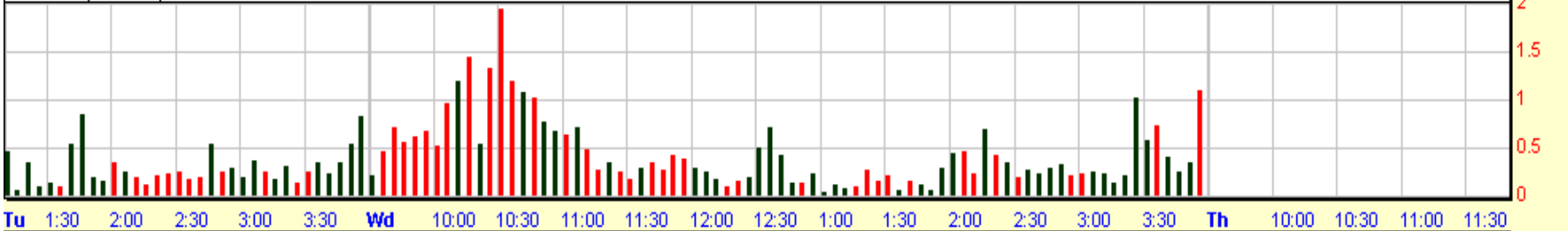
Exp. Mov. Avg. (8) Last=34.18
Exp. Mov. Avg. (20) Last=34.08
Exp. Mov. Avg. (60) Last=33.97
Exp. Mov. Avg. (240) Last=34.19

SMH 5 MIN 6/15/05

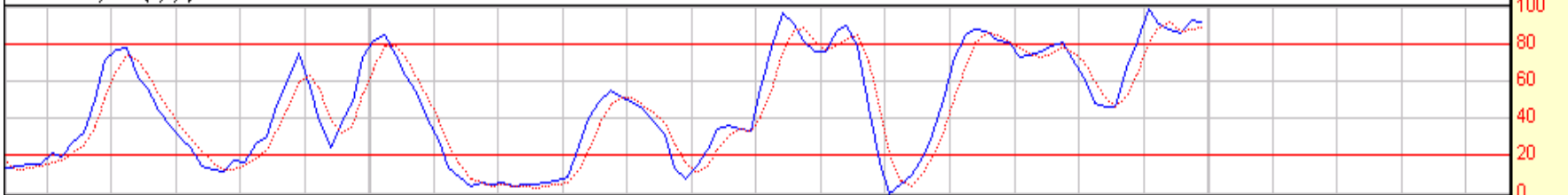


© 1998-2004 Prophet Financial Systems, Inc. | Terms of use apply.

Volume (Millions)



Stochastic, Full (8,3,3)



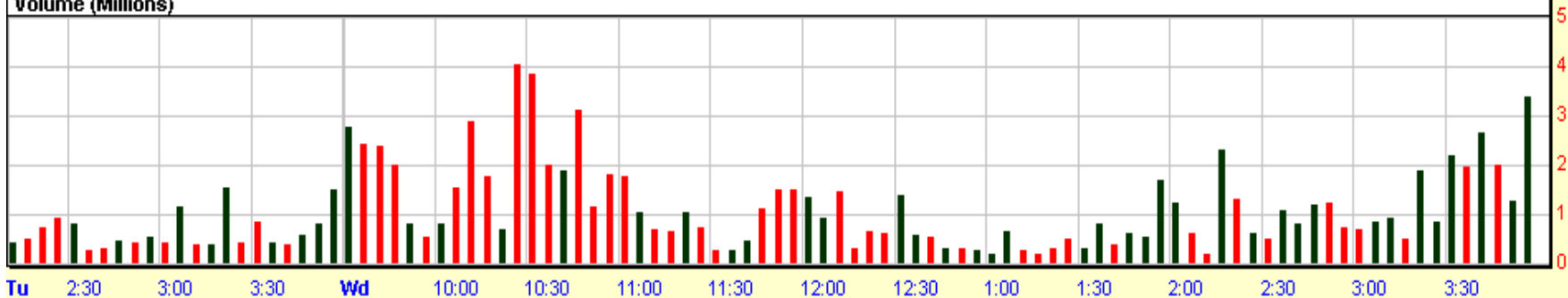
NASDAQ 100 TR SERIES I-(OTC) 37.89 0.0248 0.07%

Exp. Mov. Avg. (8) Last=37.91
Exp. Mov. Avg. (20) Last=37.90
Exp. Mov. Avg. (60) Last=37.89
Exp. Mov. Avg. (240) Last=37.80



© 1998-2004 Prophet Financial Systems, Inc. | Terms of use apply.

Volume (Millions)



Exp. Mov. Avg. (8) Last=121.52
Exp. Mov. Avg. (20) Last=121.54
Exp. Mov. Avg. (60) Last=121.43
Exp. Mov. Avg. (240) Last=121.28

SPY 5 MIN 6/20/05



Th Fr 10 11 12 1 2 3 Mn 10 11 12 1 2 3 Tu 10 11