

THE KEVIN HAGGERTY
INNER CIRCLE
TRAINING PROGRAM

April 11, 2005

Diamonds Trustseries1 104.59 0.00 0.00%

Standard Dev. Channel (1) Last=106.58

Standard Dev. Channel (2) Last=106.55

Standard Dev. Channel (3) Last=106.51

Exp. Mov. Avg. (200) Last=103.98

Exp. Mov. Avg. (233) Last=103.43



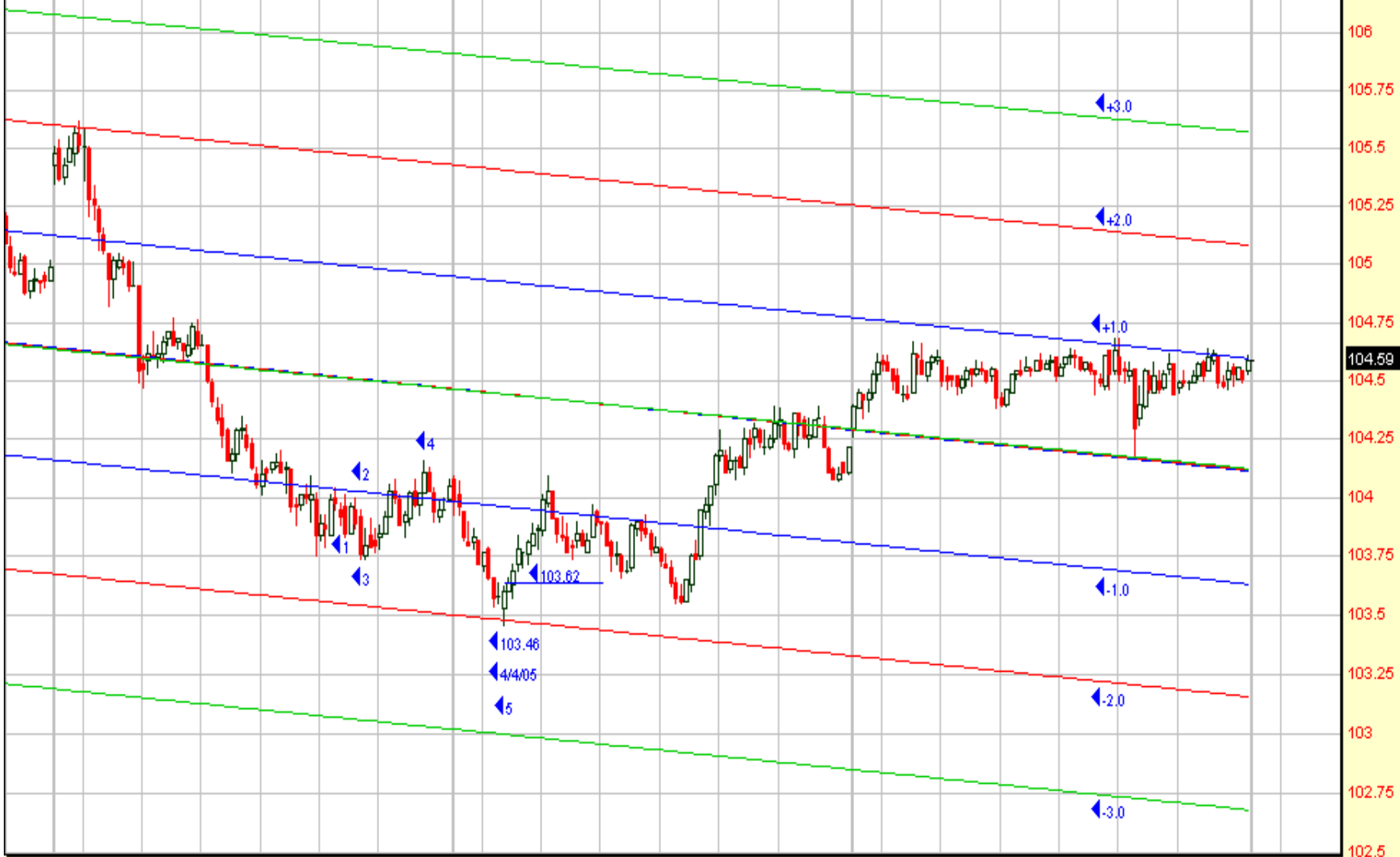
DIAMONDS TRUST 104.59 0.00 0.00%

Standard Dev. Channel (1) Last=104.12

Standard Dev. Channel (2) Last=104.12

Standard Dev. Channel (3) Last=104.13

◀ DIA 5 DAY- 5 MIN STDV CHANNEL [4/5/05]



Th Fr 10 11 12 1 2 3 Mn 10 11 12 1 2 3 Tu 10 11 12 1 2 3 Wd 10

S&p Dep Receipts 118.19 0.00 0.00%

Standard Dev. Channel (1) Last=119.52

Standard Dev. Channel (2) Last=119.48

Standard Dev. Channel (3) Last=119.42

Exp. Mov. Avg. (200) Last=115.85

Exp. Mov. Avg. (233) Last=115.07

SPY 3 MONTH STDV CHANNEL 4/5/05



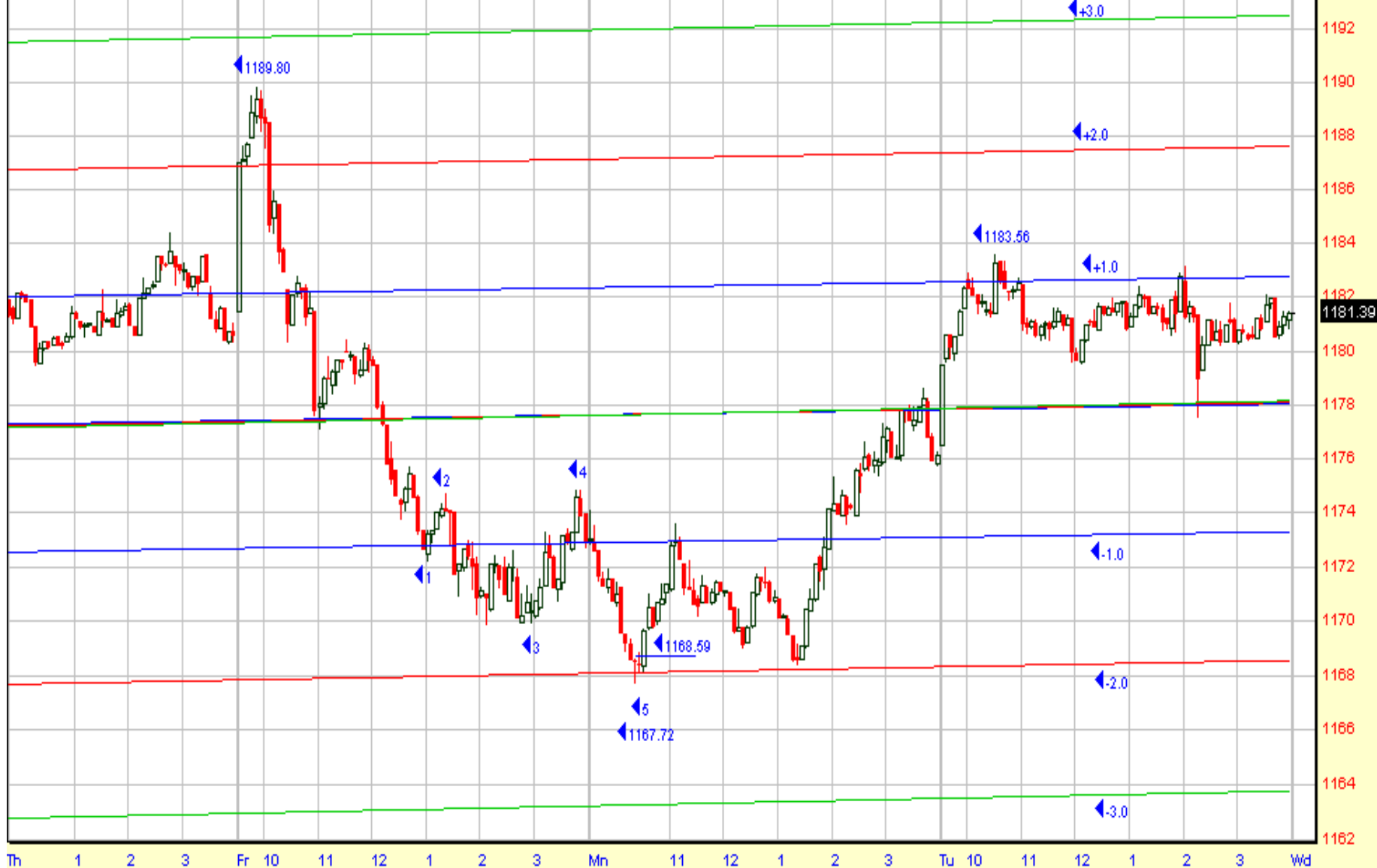
S&p 500 Index 1181.39 0.00 0.00%

Standard Dev. Channel (1) Last=1178.03

Standard Dev. Channel (2) Last=1178.09

Standard Dev. Channel (3) Last=1178.15

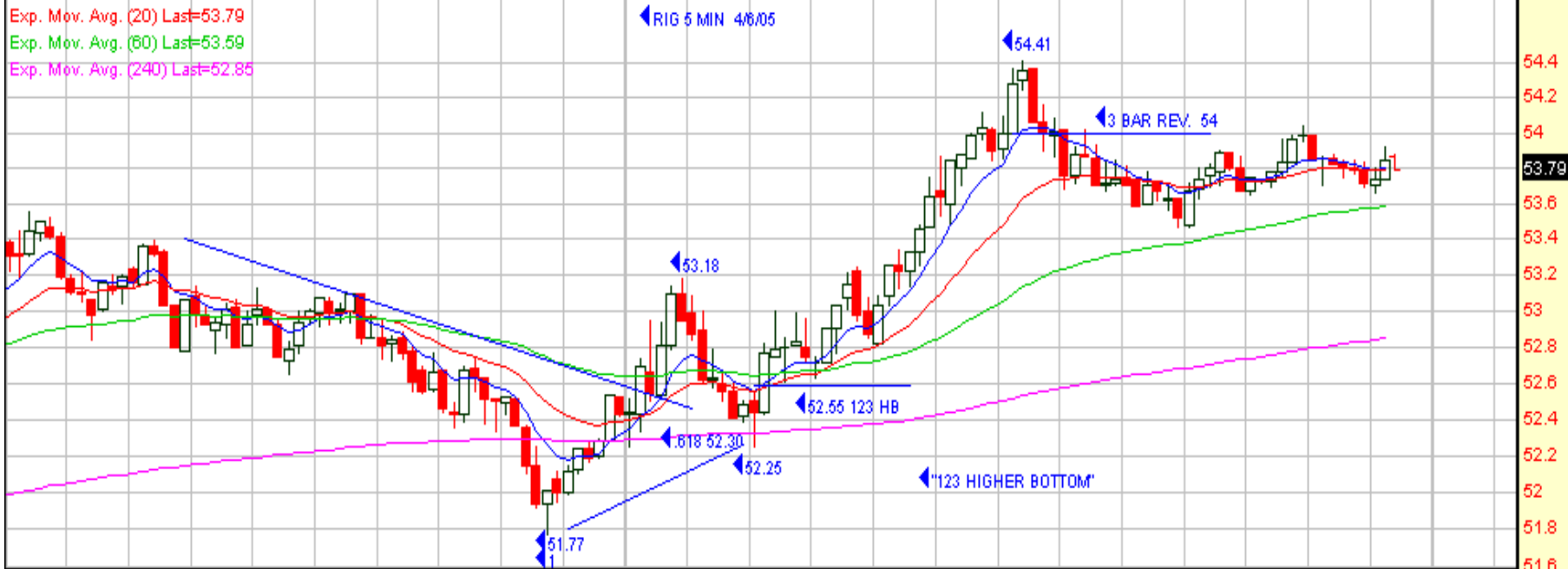
SPY 5 DAY-5 MIN STDV CHANNEL



Th 1 2 3 Fr 10 11 12 1 2 3 Mn 11 12 1 2 3 Tu 10 11 12 1 2 3 Wd

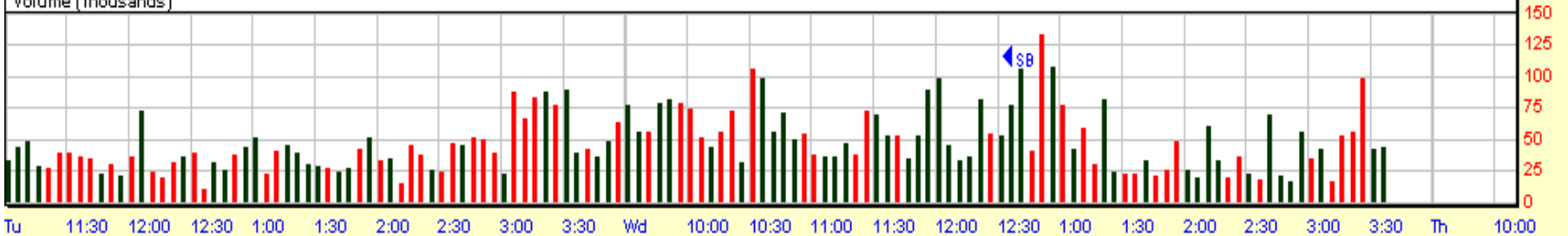
TRANSOCEAN INC 53.79 1.36 2.59%

Exp. Mov. Avg. (8) Last=53.80
Exp. Mov. Avg. (20) Last=53.79
Exp. Mov. Avg. (60) Last=53.59
Exp. Mov. Avg. (240) Last=52.85

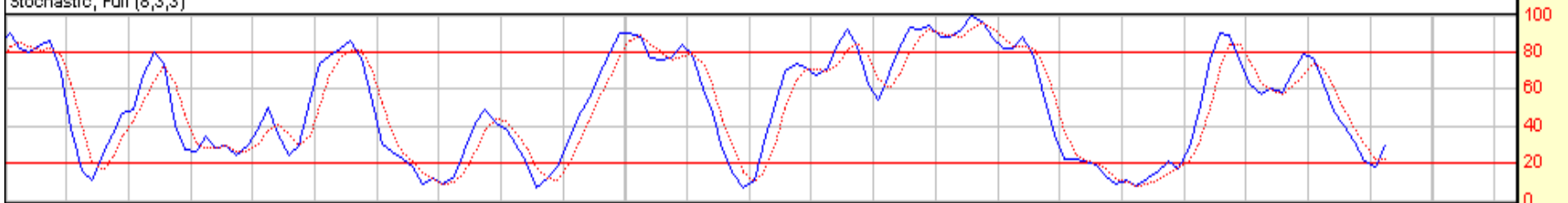


© 1998-2004 Prophet Financial Systems, Inc. | Terms of use apply.

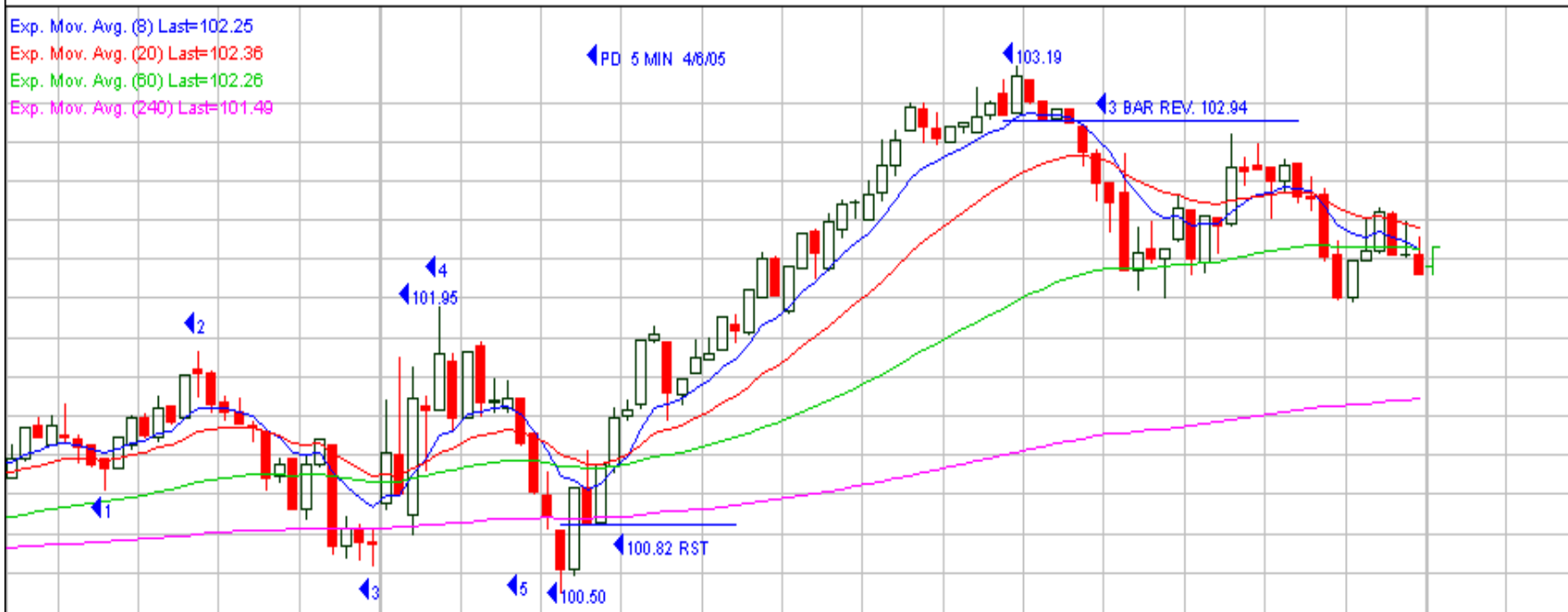
Volume (Thousands)



Stochastic, Full (8,3,3)



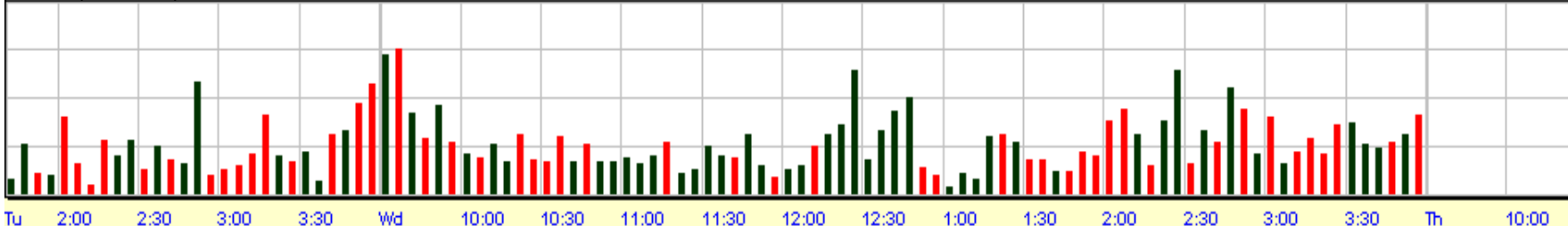
Exp. Mov. Avg. (8) Last=102.25
Exp. Mov. Avg. (20) Last=102.36
Exp. Mov. Avg. (60) Last=102.26
Exp. Mov. Avg. (240) Last=101.49



103
102.8
102.6
102.4
102.2
102
101.8
101.6
101.4
101.2
101
100.8
100.6
100.4

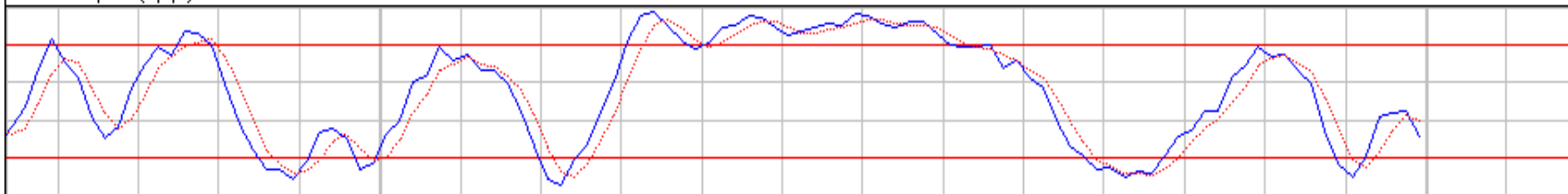
© 1998-2004 Prophet Financial Systems, Inc. | Terms of use apply.

Volume (Thousands)



80
60
40
20
0

Stochastic, Full (8,3,3)



100
80
60
40
20
0

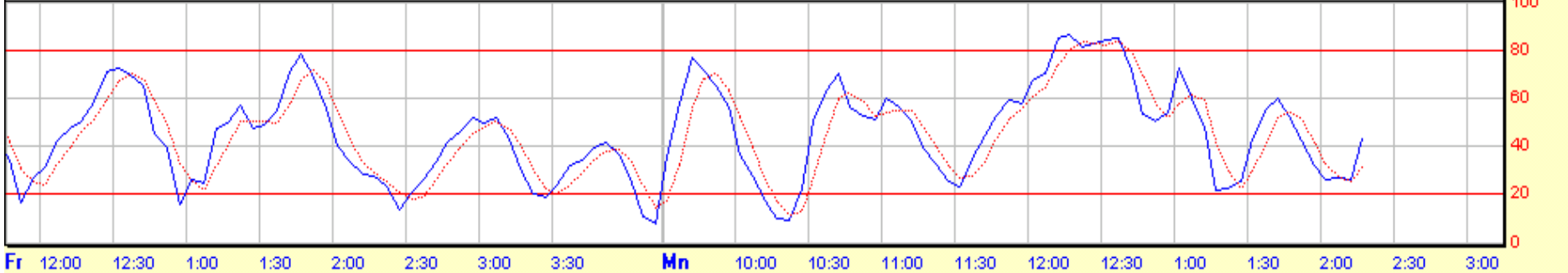
STANDARD & POORS DEP REC 118.13 0.13 0.11%

Exp. Mov. Avg. (20) Last=118.14
Exp. Mov. Avg. (60) Last=118.19
Exp. Mov. Avg. (240) Last=118.39



© 1998-2004 Prophet Financial Systems, Inc. | Terms of use apply.

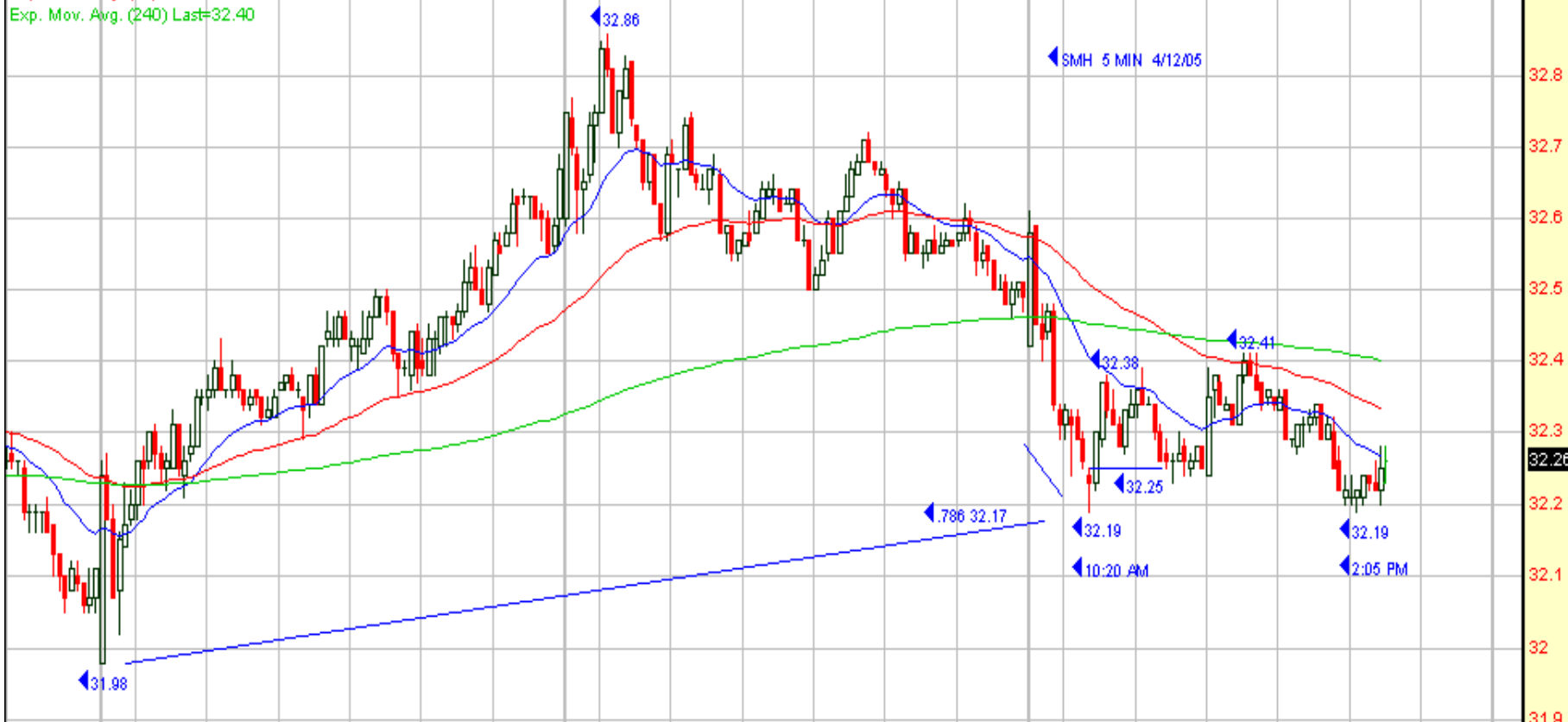
Stochastic, Full (8,3,3)



Fr 12:00 12:30 1:00 1:30 2:00 2:30 3:00 3:30 Mn 10:00 10:30 11:00 11:30 12:00 12:30 1:00 1:30 2:00 2:30 3:00

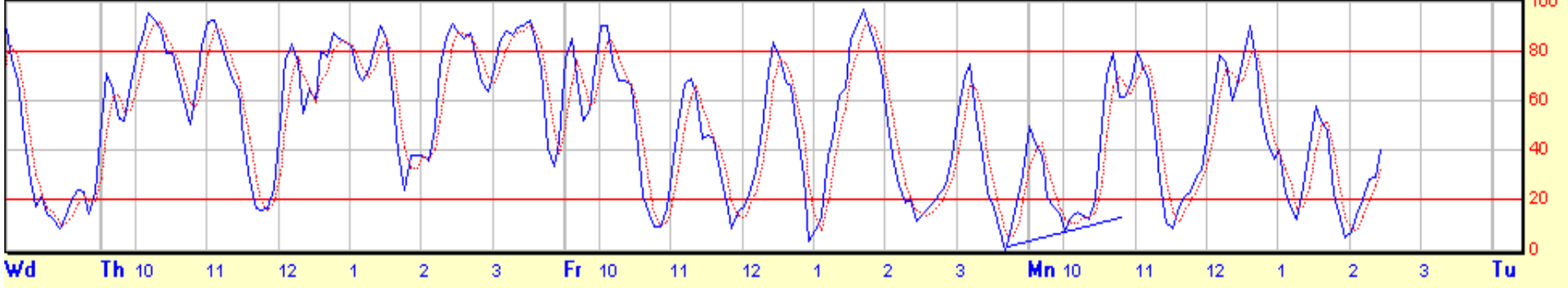
SEMICONDUCTOR HLDRS TR 32.26 -0.23 -0.71%

Exp. Mov. Avg. (20) Last=32.27
Exp. Mov. Avg. (60) Last=32.33
Exp. Mov. Avg. (240) Last=32.40



© 1998-2004 Prophet Financial Systems, Inc. | Terms of use apply.

Stochastic, Full (8,3,3)



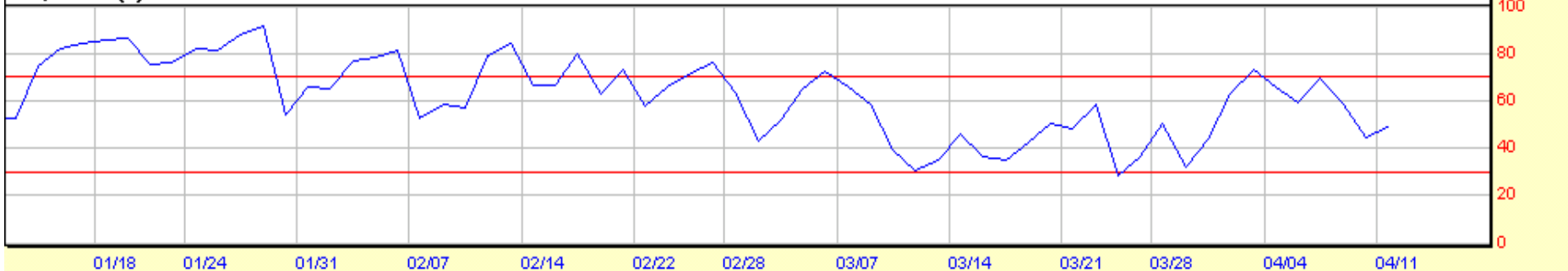
OIL SERVICE HOLDERS TR 97.11 1.11 1.16%

Exp. Mov. Avg. (20) Last=96.09
Exp. Mov. Avg. (50) Last=94.00
Exp. Mov. Avg. (89) Last=91.01
Exp. Mov. Avg. (200) Last=84.33



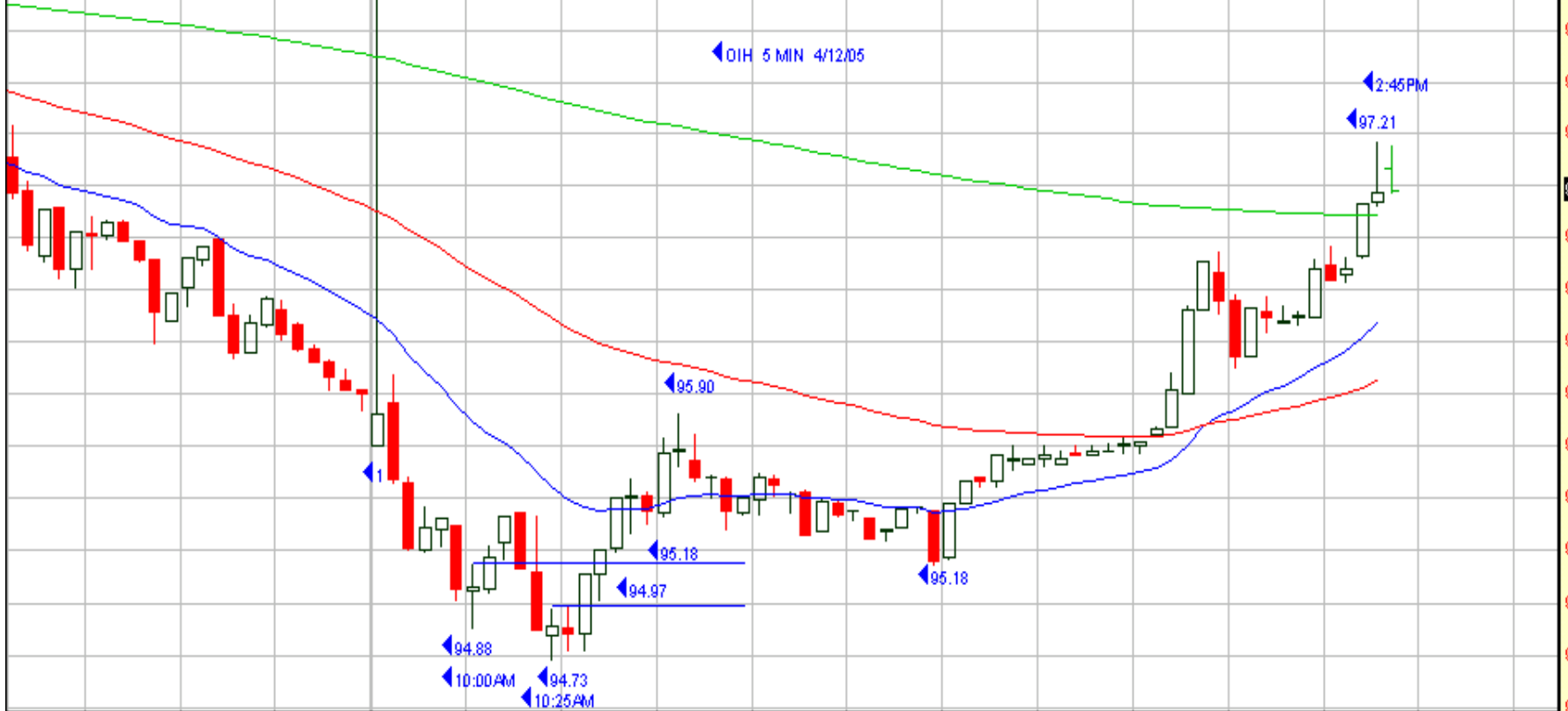
© 1998-2004 Prophet Financial Systems, Inc. | Terms of use apply.

RSI, Wilder (5)



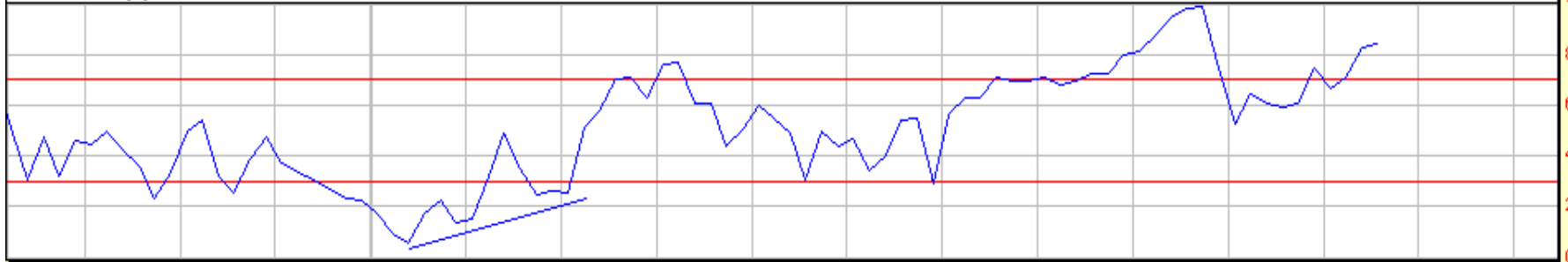
OIL SERVICE HOLDRS TR 96.97 0.97 1.01%

Exp. Mov. Avg. (20) Last=96.33
Exp. Mov. Avg. (60) Last=96.06
Exp. Mov. Avg. (240) Last=96.86



© 1998-2004 Prophet Financial Systems, Inc. | Terms of use apply.

RSI, Wilder (5)



Fr 2:30 3:00 3:30 Mn 10:00 10:30 11:00 11:30 12:00 12:30 1:00 1:30 2:00 2:30 3:00 3:30

DIAMOND OFFSHRE DRILLING 50.67 1.08 2.18%

Exp. Mov. Avg. (20) Last=50.32
Exp. Mov. Avg. (60) Last=50.06
Exp. Mov. Avg. (240) Last=50.54



© 1998-2004 Prophet Financial Systems, Inc. | Terms of use apply.

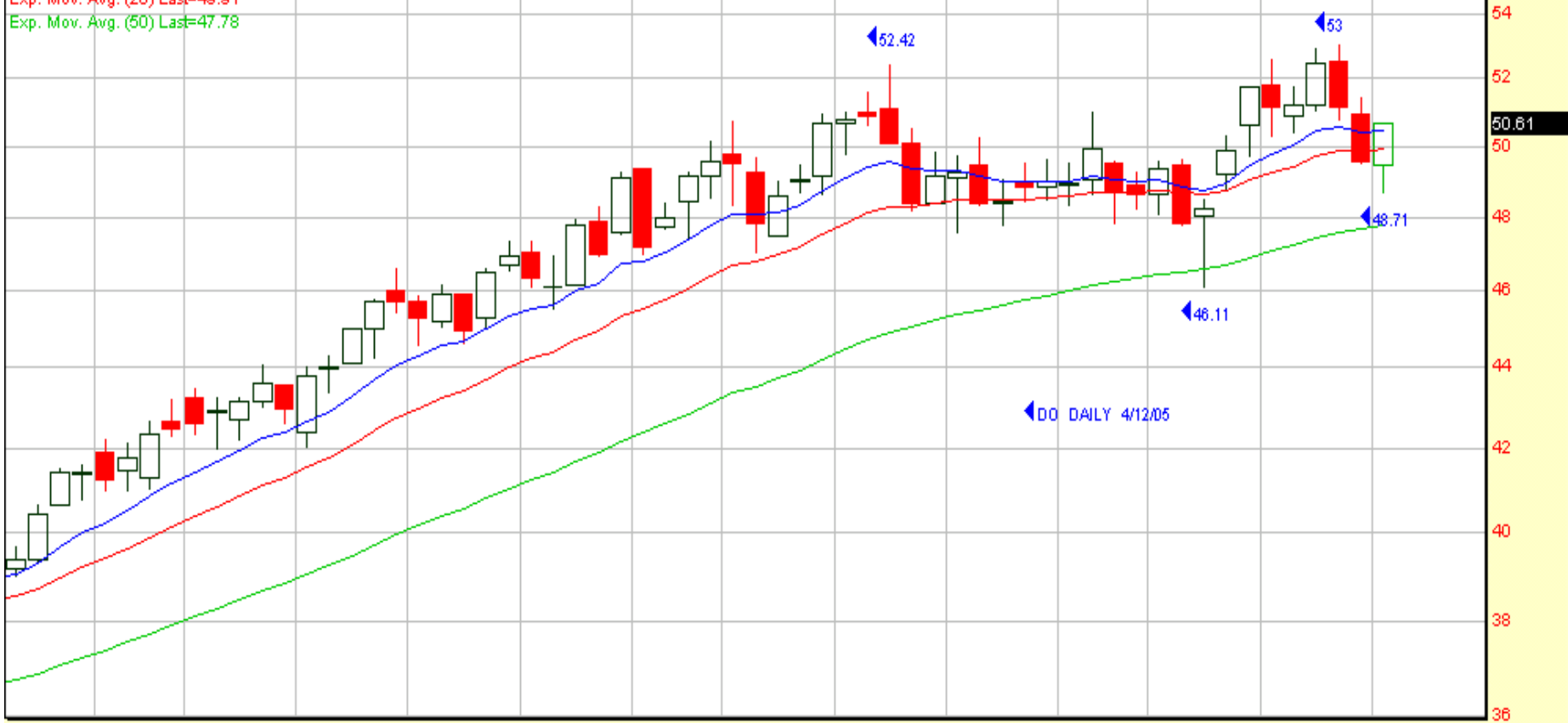
RSI, Wilder (5)



Fr 11:00 11:30 12:00 12:30 1:00 1:30 2:00 2:30 3:00 3:30 Mn 10:00 10:30 11:00 11:30 12:00 12:30 1:00 1:30 2:00 2:30 3:00 3:30

DIAMOND OFFSHRE DRILLING 50.61 1.02 2.06%

Exp. Mov. Avg. (10) Last=50.46
Exp. Mov. Avg. (20) Last=49.91
Exp. Mov. Avg. (50) Last=47.78



© 1998-2004 Prophet Financial Systems, Inc. | Terms of use apply.

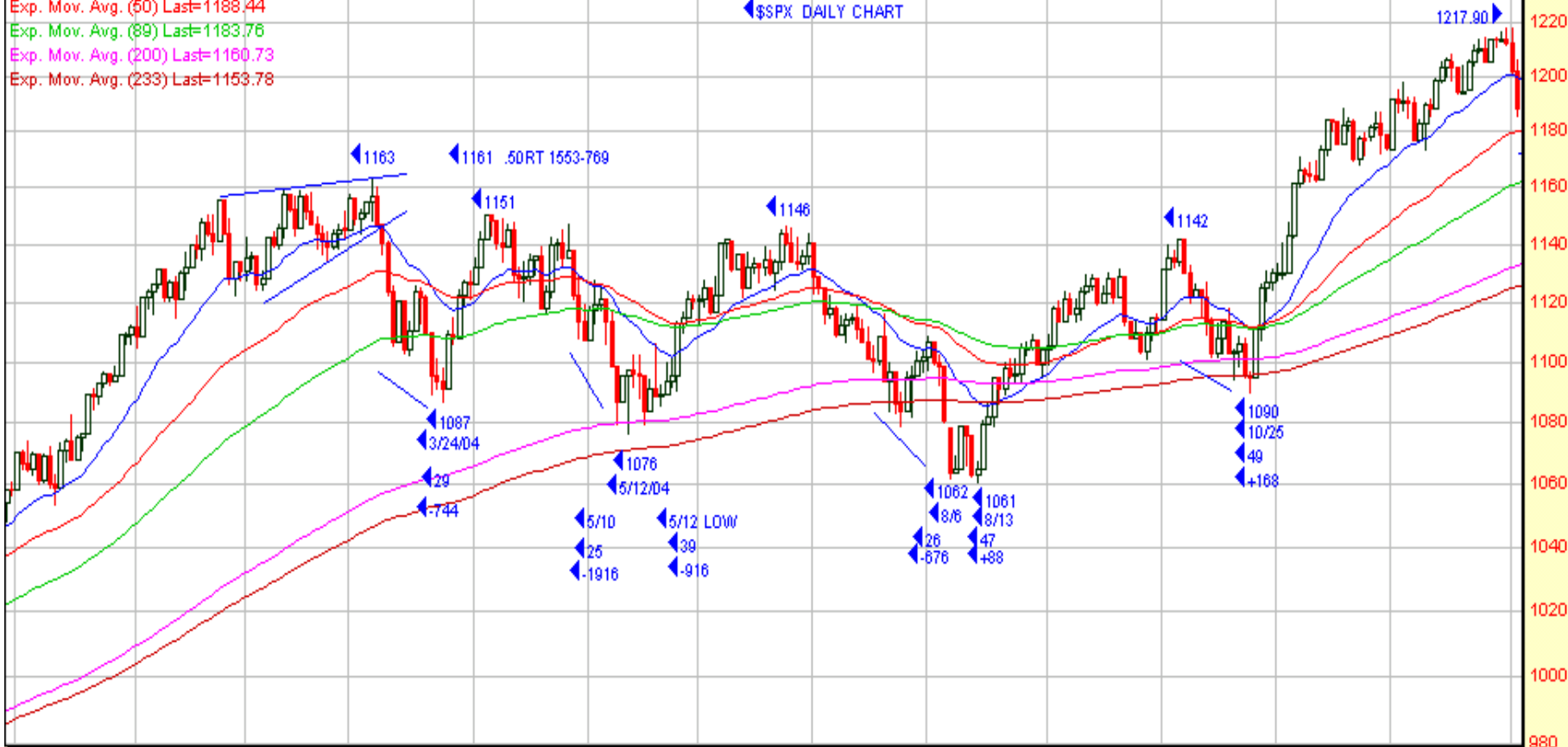
RSI, Wilder (5)



S&P 500 Index 1181.83 0.63 0.05%

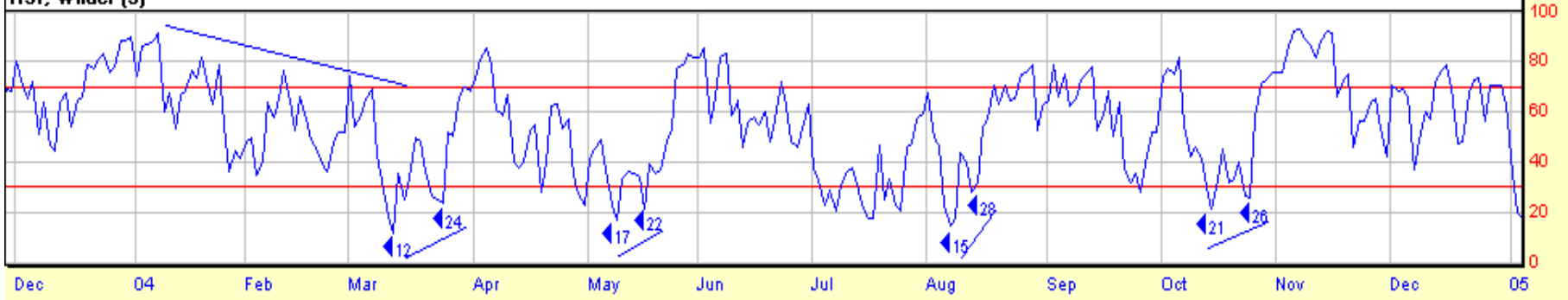
Exp. Mov. Avg. (20) Last=1184.37
Exp. Mov. Avg. (50) Last=1188.44
Exp. Mov. Avg. (89) Last=1183.76
Exp. Mov. Avg. (200) Last=1160.73
Exp. Mov. Avg. (233) Last=1153.78

◀\$SPX DAILY CHART



© 1998-2004 Prophet Financial Systems, Inc. | Terms of use apply.

RSI, Wilder (5)



S&P 500 Index 1181.01 -0.19 -0.02%



© 1998-2004 Prophet Financial Systems, Inc. | Terms of use apply.

RSI, Wilder (5)

